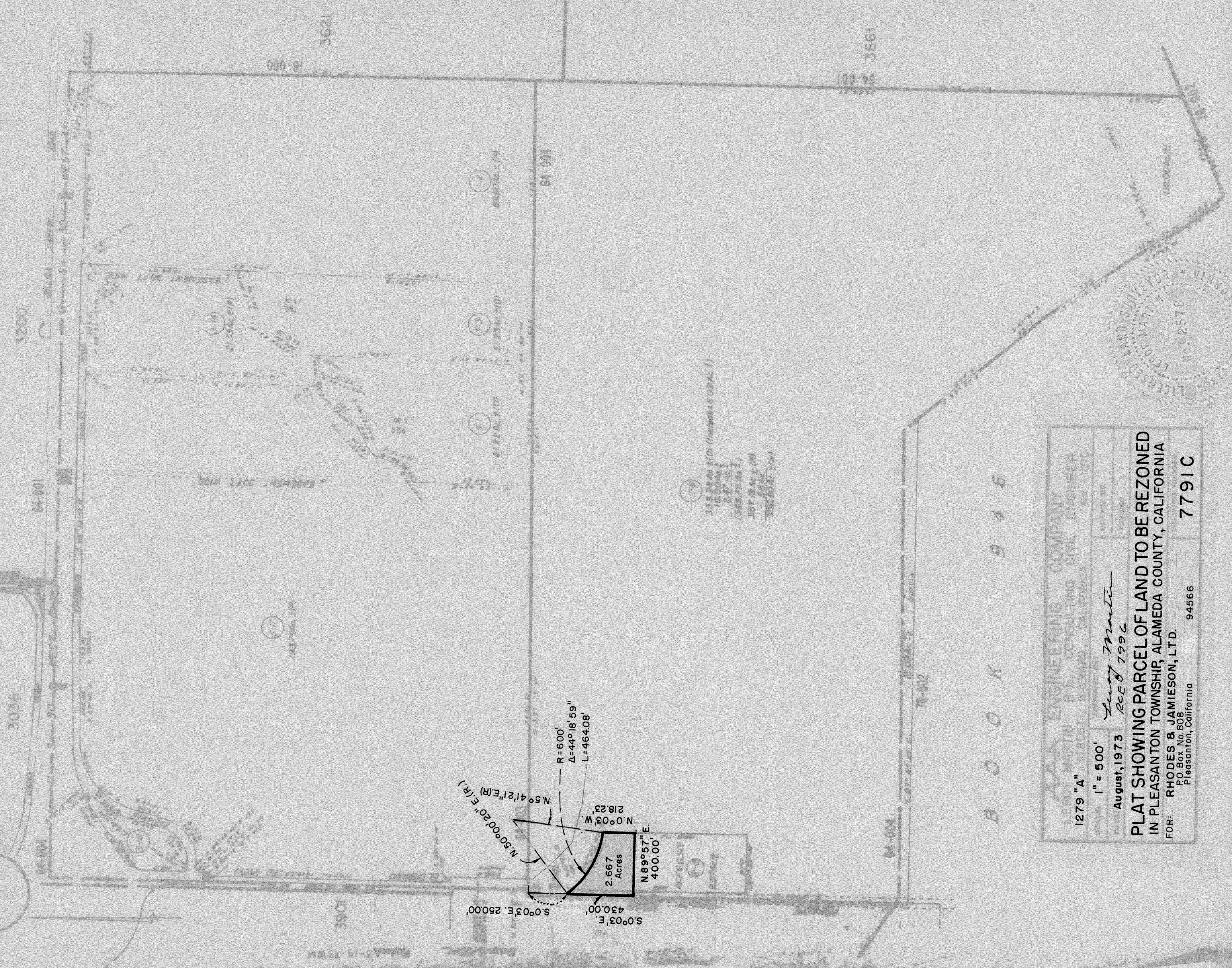


ASSESSOR'S MAP 99B

Plot of the Santa Rita Rancho (John Yountz) (Sk. X Pat. Pg. 183)

3750

Scale: 1" = 500'



B O O K 9 4 6

AAA ENGINEERING COMPANY	
LEROY MARTIN P.E. CONSULTING CIVIL ENGINEER	
1279 "A" STREET HAYWARD, CALIFORNIA 581 - 1070	
SCALE: 1" = 500'	APPROVED BY: <i>Leroy Martin</i>
DATE: August, 1973	REVISED: <i>2-2-79</i>
PLAT SHOWING PARCEL OF LAND TO BE REZONED IN PLEASANTON TOWNSHIP, ALAMEDA COUNTY, CALIFORNIA	
FOR: RHODES & JAMIESON, LTD.	94566
P.O. Box No. 808 Pleasanton, California	7791C

