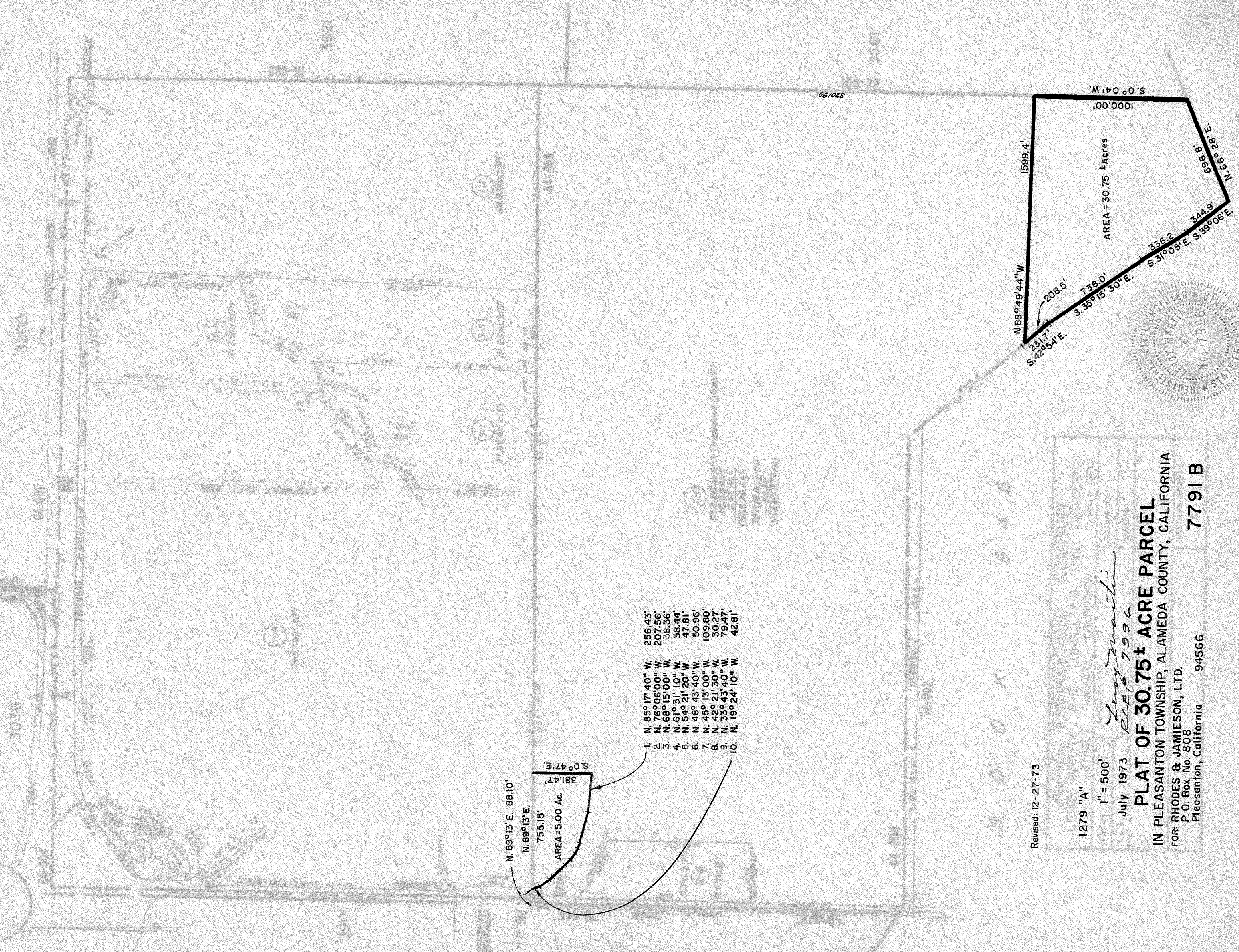


ASSESSOR'S MAP 99B

Plot of the Santa Rita Rancho (John Yountz) (Sk. # Pat. Pg. 163)

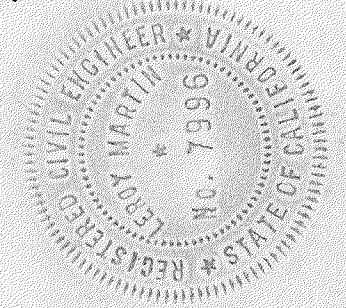
3750 Scale: 1" = 500'



- N. 89°13'E. 88.10'
 N. 89°13'E.
 755.15'
 AREA = 5.00 Ac.
 381.47'
 S. 0°47'E.
1. N. 85°17' 40" W.
 2. N. 76°06'00" W.
 3. N. 68°15'00" W.
 4. N. 61°31' 10" W.
 5. N. 54°21' 20" W.
 6. N. 48°43'40" W.
 7. N. 45°13'00" W.
 8. N. 42°21' 30" W.
 9. N. 33°43'40" W.
 10. N. 19°24' 10" W.
- 256.43'
 207.56'
 38.36'
 38.44'
 47.81'
 50.96'
 109.80'
 30.27'
 79.47'
 42.81'

Revised: 12-27-73

LEROY MARTIN ENGINEERING COMPANY
 1279 "A" 1" = 500'
 July 1973
PLAT OF 30.75 ± ACRE PARCEL
 IN PLEASANTON TOWNSHIP, ALAMEDA COUNTY, CALIFORNIA
 FOR: RHODES & JAMIESON, LTD.
 P.O. Box No. 808
 Pleasanton, California 94566



B O O K 9 4 6