

BOUNDARY SURVEY FOR REGAL MARKETING COMPANY
IN THE CITY OF FREMONT, ALAMEDA COUNTY, CALIFORNIA

Surveyed: January 7, 1972
Scale: 1 Inch = 20 Feet

John A. Mancini
JOHN A. MANCINI, R.E. No. 1592
1279 "A" Street, Hayward, Calif.

LEGEND

- Surveyed Lines —————
- Hubs ————— + □
- Crosses ————— +
- Fence ————— x — x — x
- Railroad Spike ————— •
- Nail & Shiner ————— ○

REFER

F.B. 1050, p. 77
Maps 35-160
35-161

60'

CHAPEL WAY

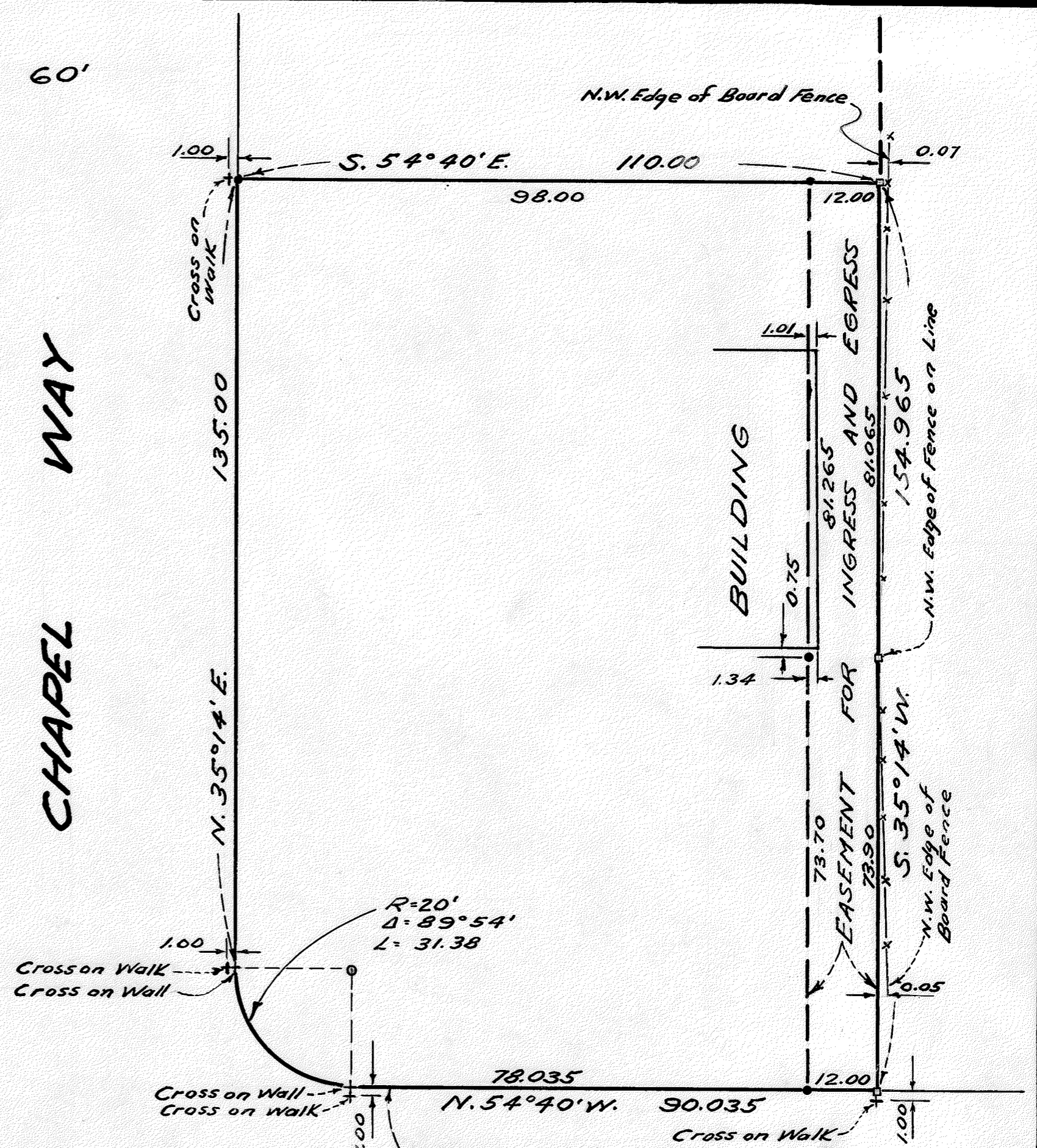
50'

FREMONT

Center Line

BOULEVARD

52'



NORTHEASTERLY LINE OF THE PARCEL OF LAND CONVEYED TO THE CITY OF FREMONT BY LOUIS IRWIN, ET UX., BY DEED RECORDED SEPTEMBER 16, 1960 ON REEL 168, AT IMAGE 50, (AR-109281) ALAMEDA COUNTY RECORDS