

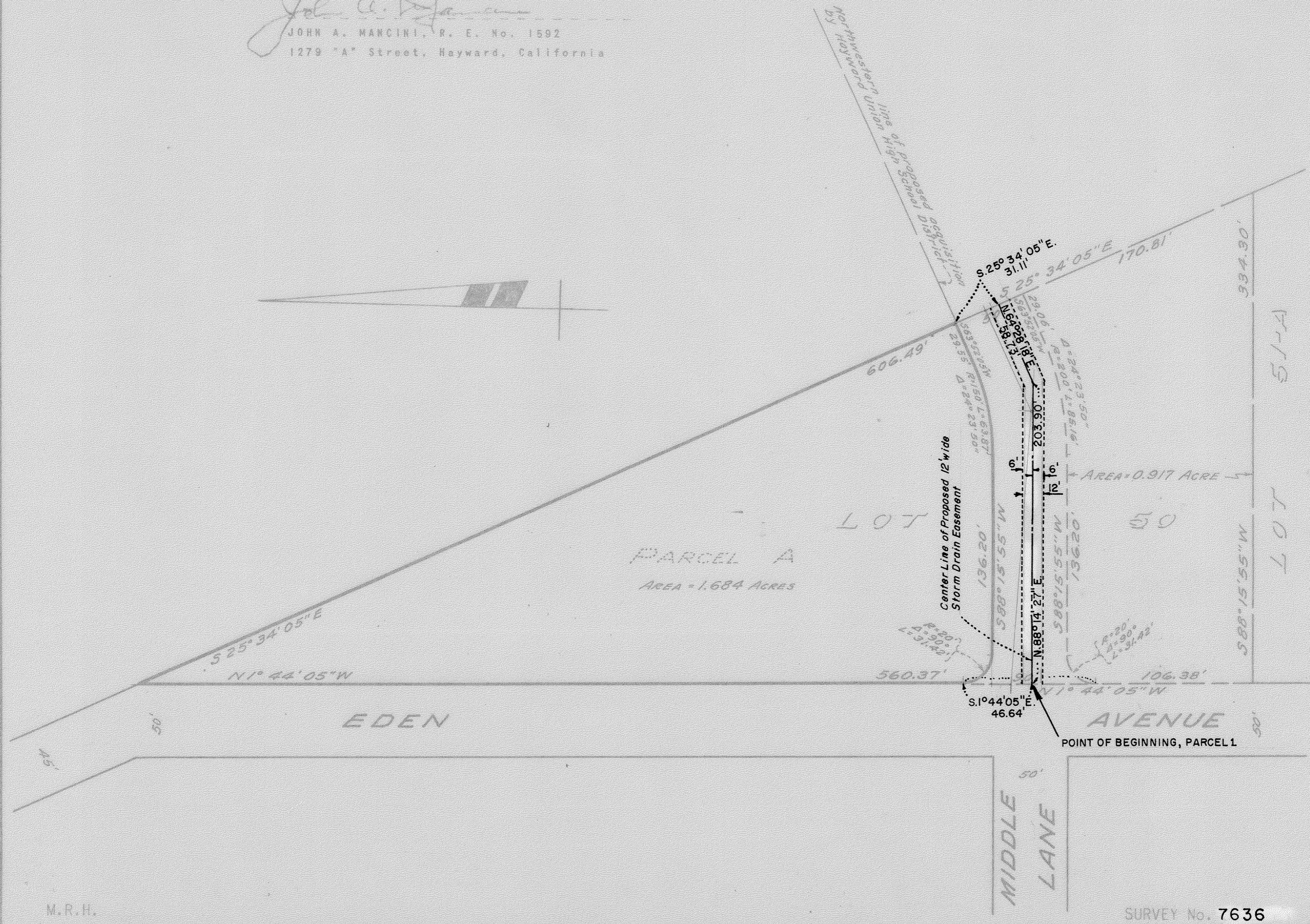
PLAT FOR HAYWARD UNIFIED SCHOOL DISTRICT
 IN EDEN TOWNSHIP, ALAMEDA COUNTY, CALIFORNIA

REFER:
 Map T-16
 Map T-58
 Map 26-4-71A
 Survey No. 3872

Scale: 1 Inch = 60 Feet

Date: October, 1970

John A. Mancini
 JOHN A. MANCINI, P. E. No. 1592
 1279 "A" Street, Hayward, California



M.R.H.

SURVEY No. 7636

SHEET NO. 2