

SURVEY FOR CONCRETE SHELL STRUCTURES
 IN THE CITY OF SAN LEANDRO, ALAMEDA COUNTY, CALIFORNIA
 SHOWING CONTROL POINTS SET FOR THE ERECTION
 OF A BUILDING IN THE BROOKVALE INDUSTRIAL TRACT

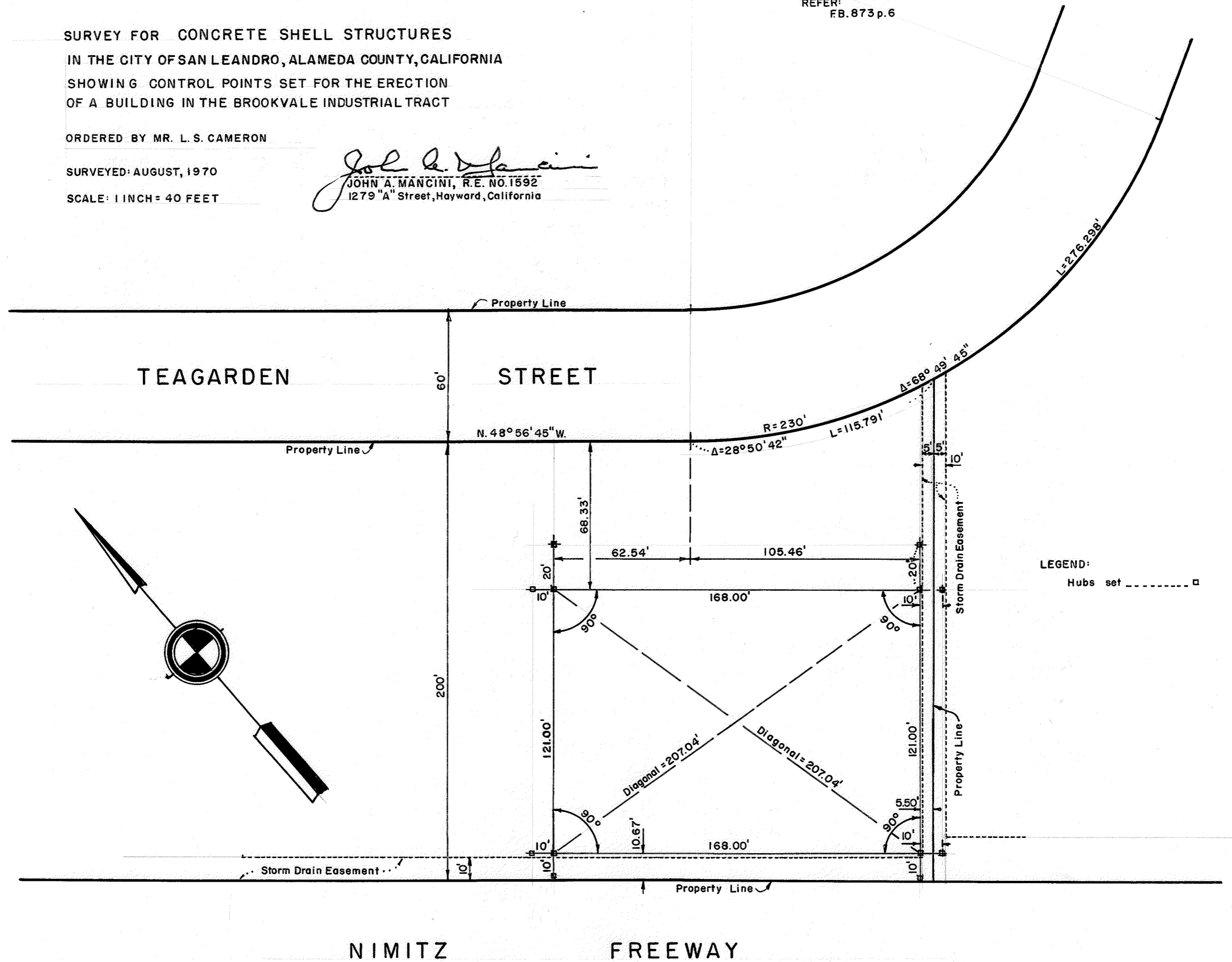
ORDERED BY MR. L. S. CAMERON

SURVEYED: AUGUST, 1970

SCALE: 1 INCH = 40 FEET

John A. Mancini
 JOHN A. MANCINI, R.E. NO. 1592
 1279 "A" Street, Hayward, California

REFER:
 FB. 873 p. 6



LEGEND:
 Hubs set $\cdots \square$