

BOUNDARY SURVEY FOR MRS. DOROTHY FARVE  
 IN THE CITY OF OAKLAND, ALAMEDA COUNTY, CALIFORNIA  
 OF LOT 8 AND A PORTION OF LOT 9, AS SAID LOTS ARE SHOWN ON  
 "AMENDED MAP OF SUBDIVISION OF BLOCK E, LINDA PARK, BROOKLYN  
 TWP., ALAMEDA CO., CAL., 1906", FILED AUGUST 9, 1906 IN BOOK  
 21 OF MAPS, AT PAGE 45, ALAMEDA COUNTY RECORDS

REFER  
 F.B. 1016, p. 78  
 File

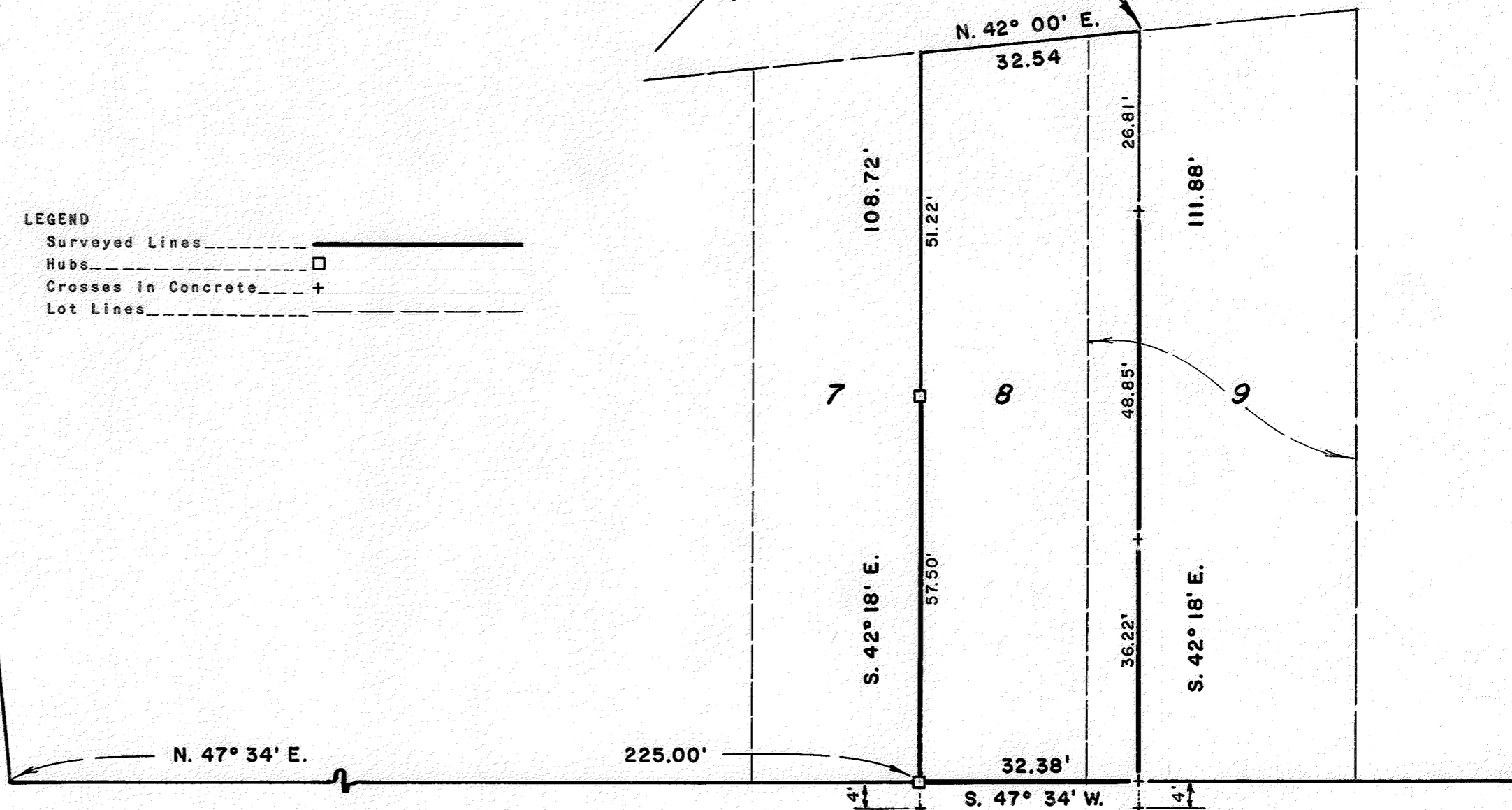
Surveyed: June 16, 1970  
 Scale: 1 Inch = 20 Feet

*John A. Mancini*  
 JOHN A. MANCINI, R.E. No. 1592  
 1279 "A" Street, Hayward, Calif.

NORTHWEST CORNER OF LAND CONVEYED TO DELLA M.  
 WRIGHT BY DEED DATED AUGUST 19, 1919 AND RE-  
 CORDED IN BOOK 2808 OF DEEDS, AT PAGE 110,  
 ALAMEDA COUNTY RECORDS

LEGEND  
 Surveyed Lines ————  
 Hubs □  
 Crosses in Concrete +  
 Lot Lines - - - - -

60'  
 EAST  
 12TH STREET  
 (FORMERLY 12TH STREET)  
 60'



55' 54 TH AVENUE 55'  
 (FORMERLY VINE STREET)