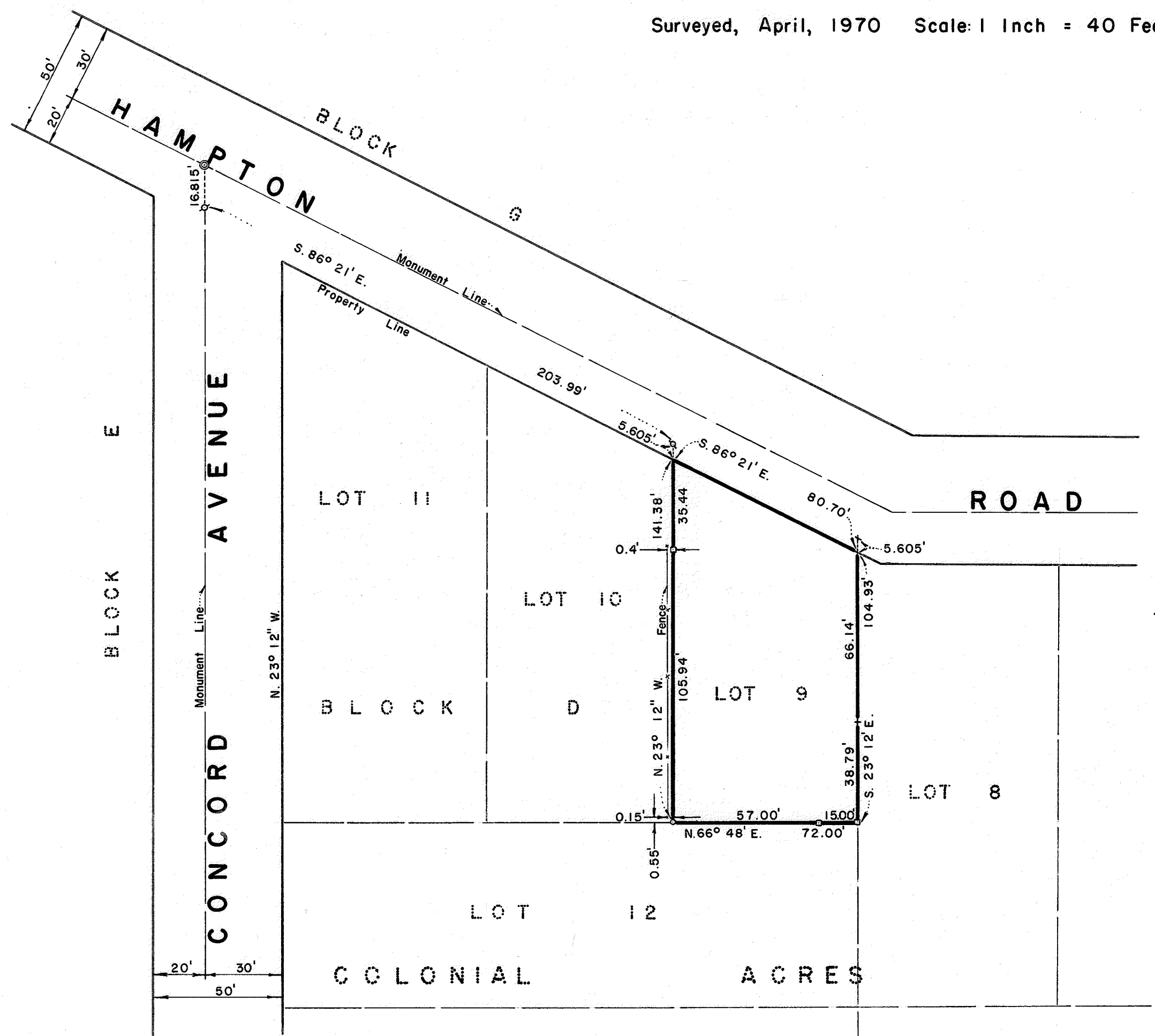


John A. Mancini
JOHN A. MANCINI, R. E. No.1592
1279 "A" Street, Hayward, California 94541

BOUNDARY SURVEY
FOR
MR. ROBERT CAMPISI
Eden Township, Alameda County, California

Surveyed, April, 1970 Scale: 1 Inch = 40 Feet



- LEGEND:**
- Wooden Hub.....□
 - Half Inch Steel Pipe.....○
 - Nail & Shiner.....⊕
 - Street Monument.....⊙
 - Cross Cut in Concrete.....+
 - Surveyed Line.....—
 - Fence.....x—x—x

