

PLAT FOR
HANSON AND HANSON
CITY OF HAYWARD, COUNTY OF ALAMEDA, CALIFORNIA
SHOWING LOCATION OF STORM DRAIN FACILITIES WITHIN THE
LIMITS OF AN ORO LOMA SANITARY EASEMENT IN THE REAR
OF LOTS 1, 2, 3, AND 4 OF BLOCK A, TRACT 2123, IN THE CITY
OF HAYWARD

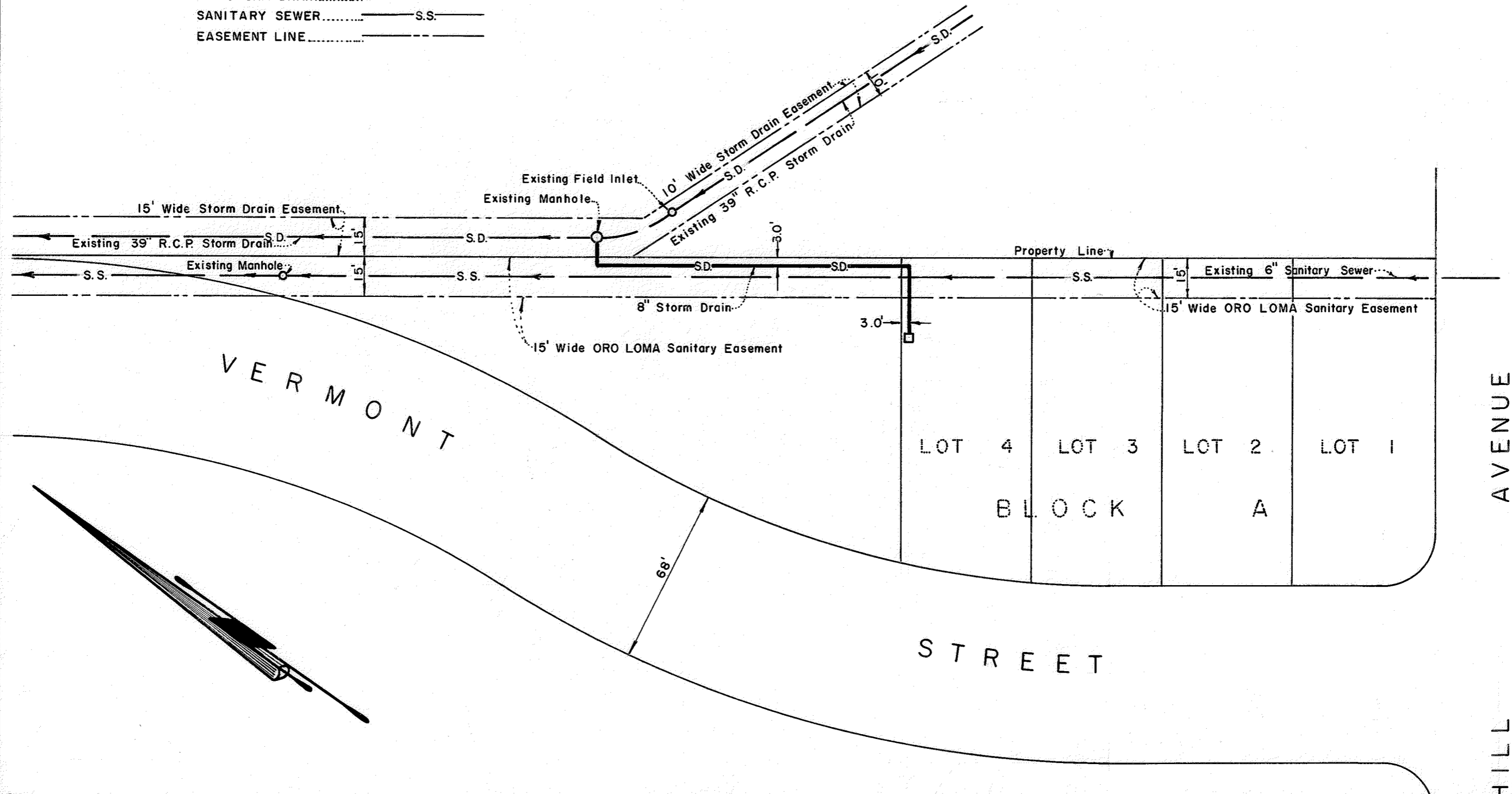
DATE: OCTOBER, 1969

SCALE: 1 INCH = 40 FEET

LEGEND:

- 8" STORM DRAIN..... S.D. _____
- 39" STORM DRAIN..... S.D. _____
- SANITARY SEWER..... S.S. _____
- EASEMENT LINE..... _____

John A. Mancini
 JOHN A. MANCINI, R. E. No. 1592
 1279 "A" STREET, HAYWARD, CALIFORNIA
 Phone 581-1443



G.J.K.