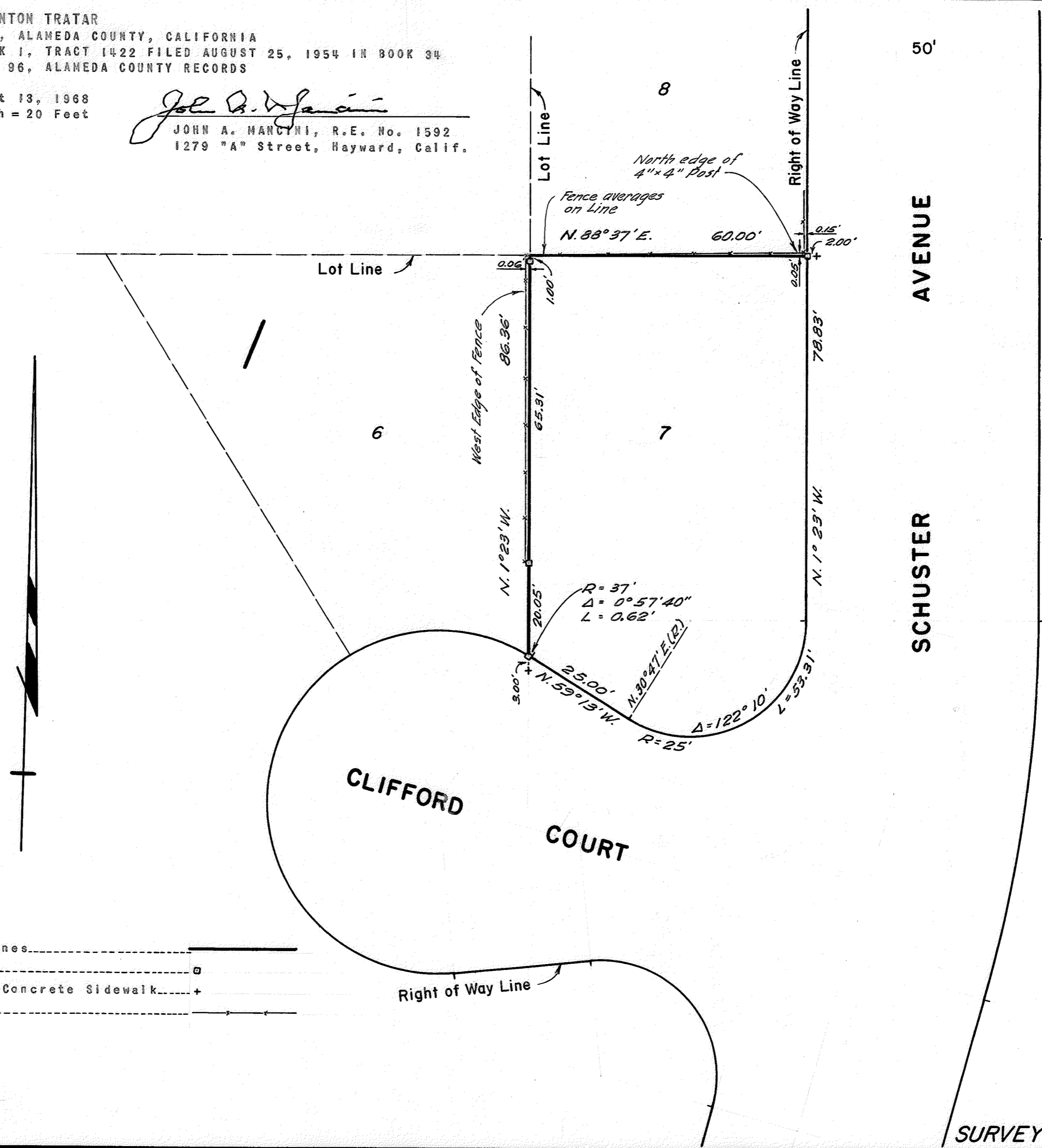


SURVEY FOR MR. ANTON TRATAR
 IN EDEN TOWNSHIP, ALAMEDA COUNTY, CALIFORNIA
 OF LOT 7 IN BLOCK 1, TRACT 1422 FILED AUGUST 25, 1954 IN BOOK 34
 OF MAPS, AT PAGE 96, ALAMEDA COUNTY RECORDS

Surveyed: August 13, 1968
 Scale: 1 inch = 20 Feet

John A. Mancini
 JOHN A. MANCINI, R.E. No. 1592
 1279 "A" Street, Hayward, Calif.

REFER
 F.B. 1039, p. 12
 Map T-1422



LEGEND
 Surveyed Lines.....
 Hubs.....
 Crosses in Concrete Sidewalk.....
 Fences.....

T.A.L.

SURVEY NO. 7330