

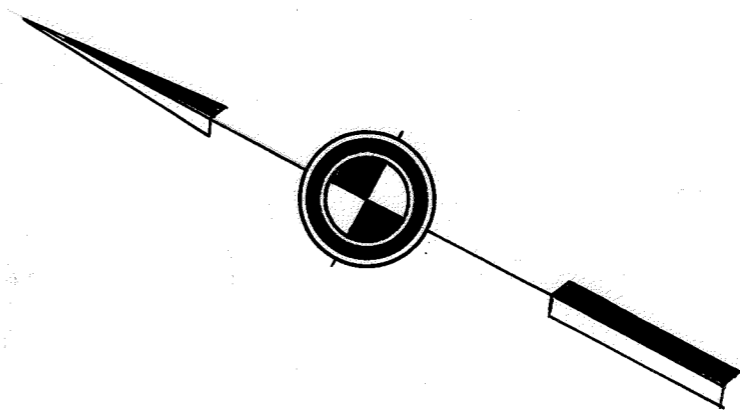
EXHIBIT "B"

SHOWING PROPERTIES IN EDEN TOWNSHIP, ALAMEDA COUNTY, CALIFORNIA
 TO BE LEASED BY THE DAVID D. BOHANNON ORGANIZATION,
 A CALIFORNIA CORPORATION, TO MERVYN'S, A CALIFORNIA CORPORATION

DATE: OCTOBER 26, 1967
 SCALE: 1 INCH = 50 FEET

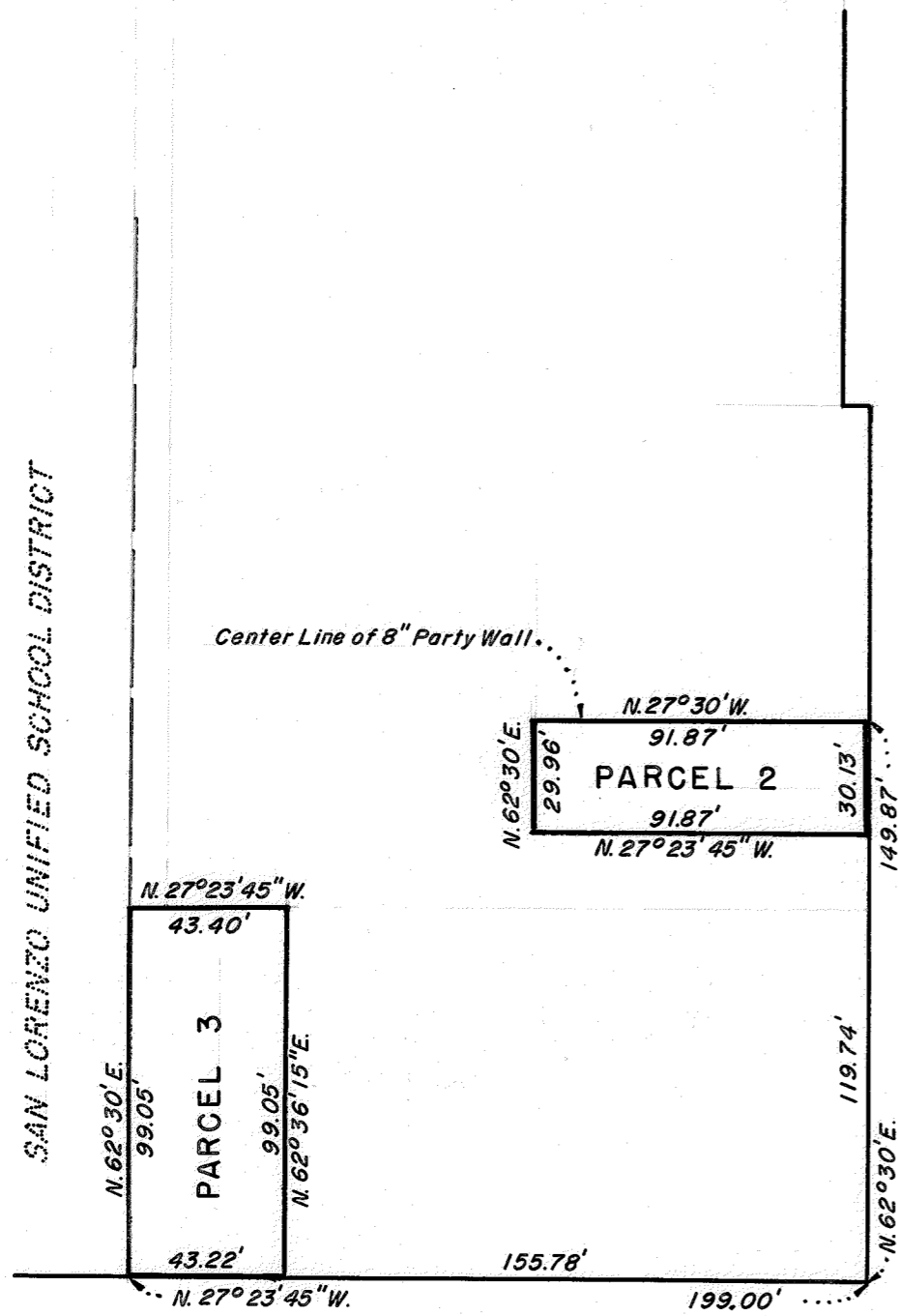
John A. Mancini
 JOHN A. MANCINI, R. E. NO. 1592
 1279 "A" Street, Hayward, California

REFER:
 F.B. 1027 p. 68
 F.B. 490 p. 16



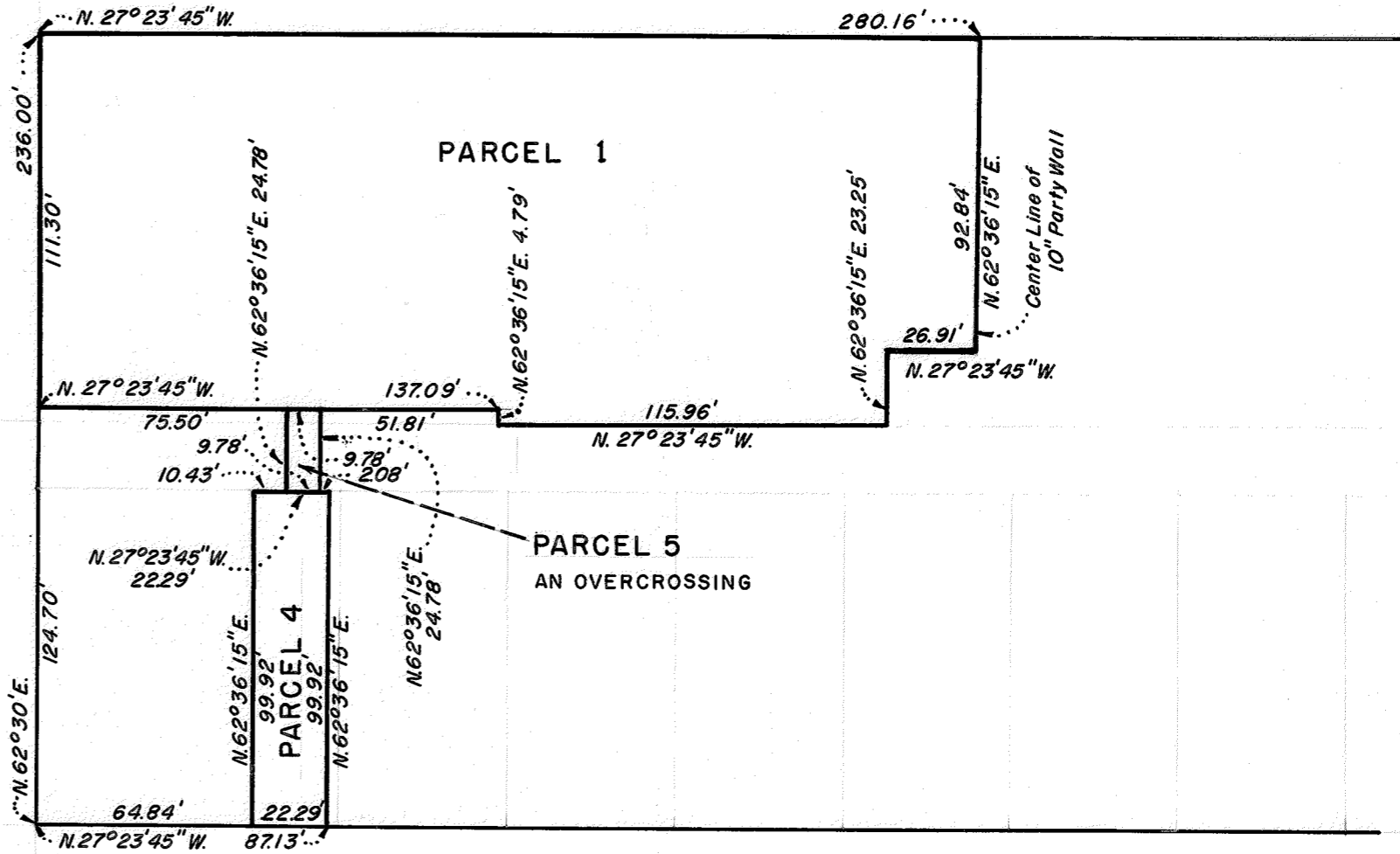
VIA MERCADO

SAN LORENZO UNIFIED SCHOOL DISTRICT



PASEO GRANDE

80.00'



VIA ARRIBA

LARGAVISTA

PASEO

N. 27° 23' 45" W

N. 27° 23' 45" W

H.W.D.

SURVEY NO. 7220

REFER 21-F