

BOUNDARY SURVEY FOR MR. C. R. ELWOOD  
 IN EDEN TOWNSHIP, ALAMEDA COUNTY, CALIFORNIA  
 OF LOT 5, BLOCK 2, TRACT 1301 FILED OCTOBER 2, 1953 IN  
 BOOK 34 OF MAPS, AT PAGE 4, ALAMEDA COUNTY RECORDS

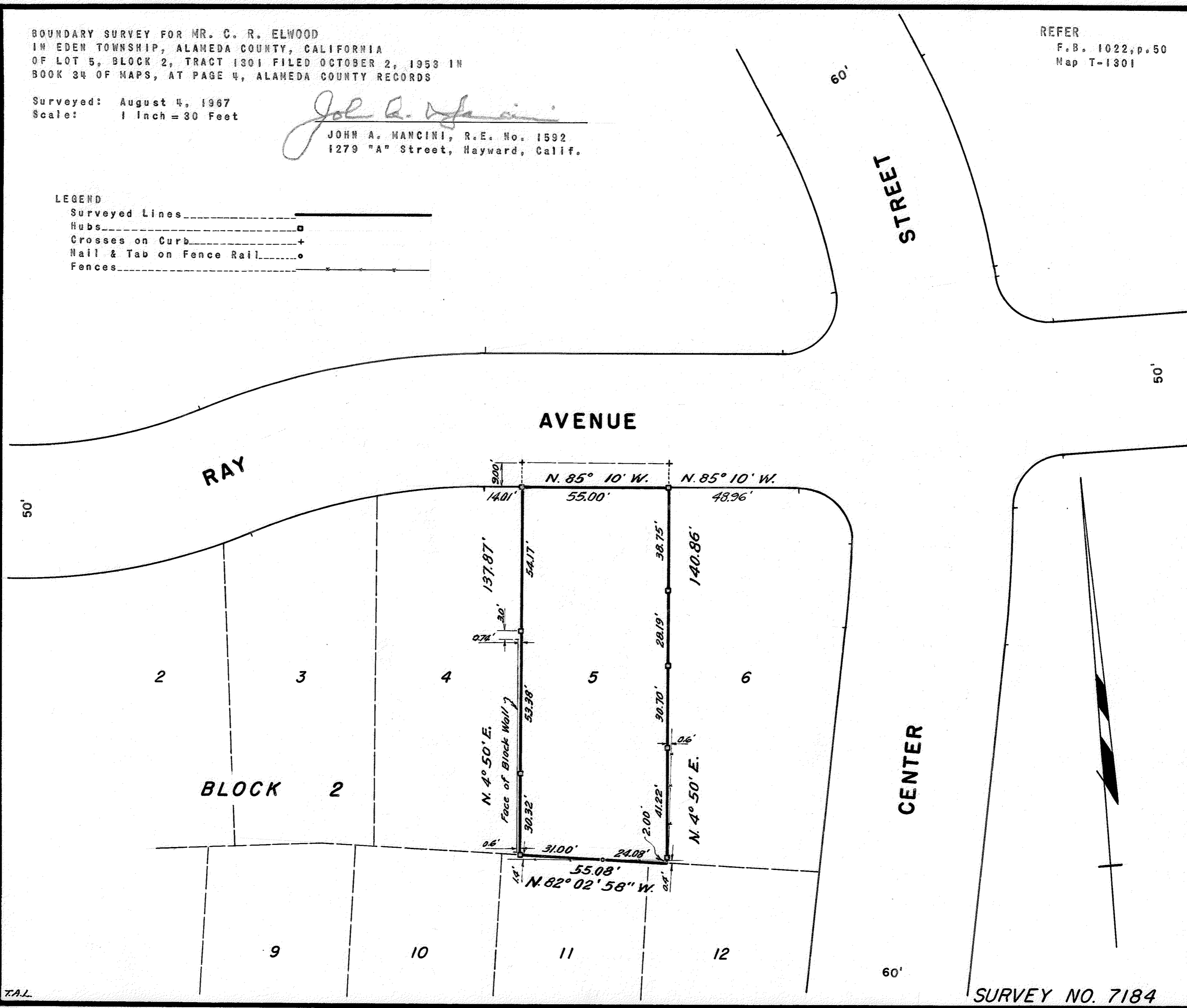
Surveyed: August 4, 1967  
 Scale: 1 Inch = 30 Feet

*John A. Mancini*  
 JOHN A. MANCINI, R.E. No. 1592  
 1279 "A" Street, Hayward, Calif.

REFER  
 F.B. 1022, p. 50  
 Map T-1301

LEGEND

- Surveyed Lines
- Hubs
- Crosses on Curb +
- Nail & Tab on Fence Rail o
- Fences



T.A.L.

SURVEY NO. 7184