

SURVEY FOR MR. CHARLES ORR
 IN EDEN TOWNSHIP, ALAMEDA COUNTY, CALIFORNIA

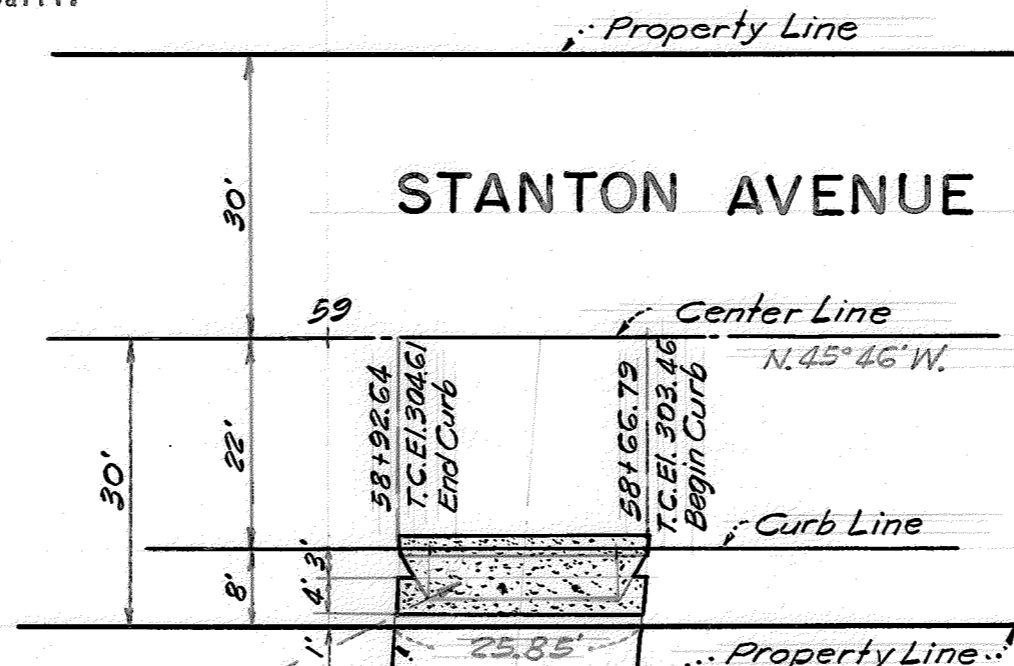
REFER
 F.B. 1016, p. 63
 Survey No. 7009

Surveyed: October, 1966
 Scale: Horizontal, 1 Inch=20 Feet
 Vertical, 1 Inch=2 Feet
 Datum Elevation: Mean Sea Level (Stanton Avenue)

John A. Mancini
 JOHN A. MANCINI, R.E. No. 1592
 1279 "A" Street, Hayward, Calif.

Top of curb at storm water inlet at
 Station 61+70 on right used as bench
 mark. Elevation 316.51

NOTE:
 Portland Cement Concrete Curb and Gutter, Driveway
 and Sidewalk to conform to the Standards of the
 County of Alameda.



Construct Standard Concrete
 Driveway (Width = 19.85') and
 Sidewalk.

LINE DIVIDING LOT 21 AND LOT 23 ACCORDING TO THE MAP OF
 "VALLEY CREST GARDENS", ETC., FILED AUGUST 10, 1909 IN
 BOOK 24 OF MAPS, AT PAGE 92, IN THE OFFICE OF THE COUNTY
 RECORDER OF ALAMEDA COUNTY

310

305

300 60

59

58

SURVEY NO. 7049

LOT 21

LOT 23

Station	Curb Grade	Elevation of Nail & Shiner 3' from Curb Line	Cut or Fill to Top of Curb	Elevation of Nail & Shiner 8' from Curb Line	Cut or Fill to Top of Curb
58+66.79	303.46	302.85	F. 0.61	303.12	F. 0.34
58+79.72	304.03	303.44	F. 0.59	303.79	F. 0.24
58+92.64	304.61	304.19	F. 0.42	304.46	F. 0.15

H.W.D.