



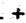
SURVEY FOR MR. JAMES G. BRYANT
 IN EDEN TOWNSHIP, ALAMEDA COUNTY, CALIFORNIA
 OF LOT 2, BLOCK I, TRACT 2084 FILED APRIL 7, 1960
 IN BOOK 41 OF MAPS, AT PAGES 88 AND 89, ALAMEDA
 COUNTY RECORDS.

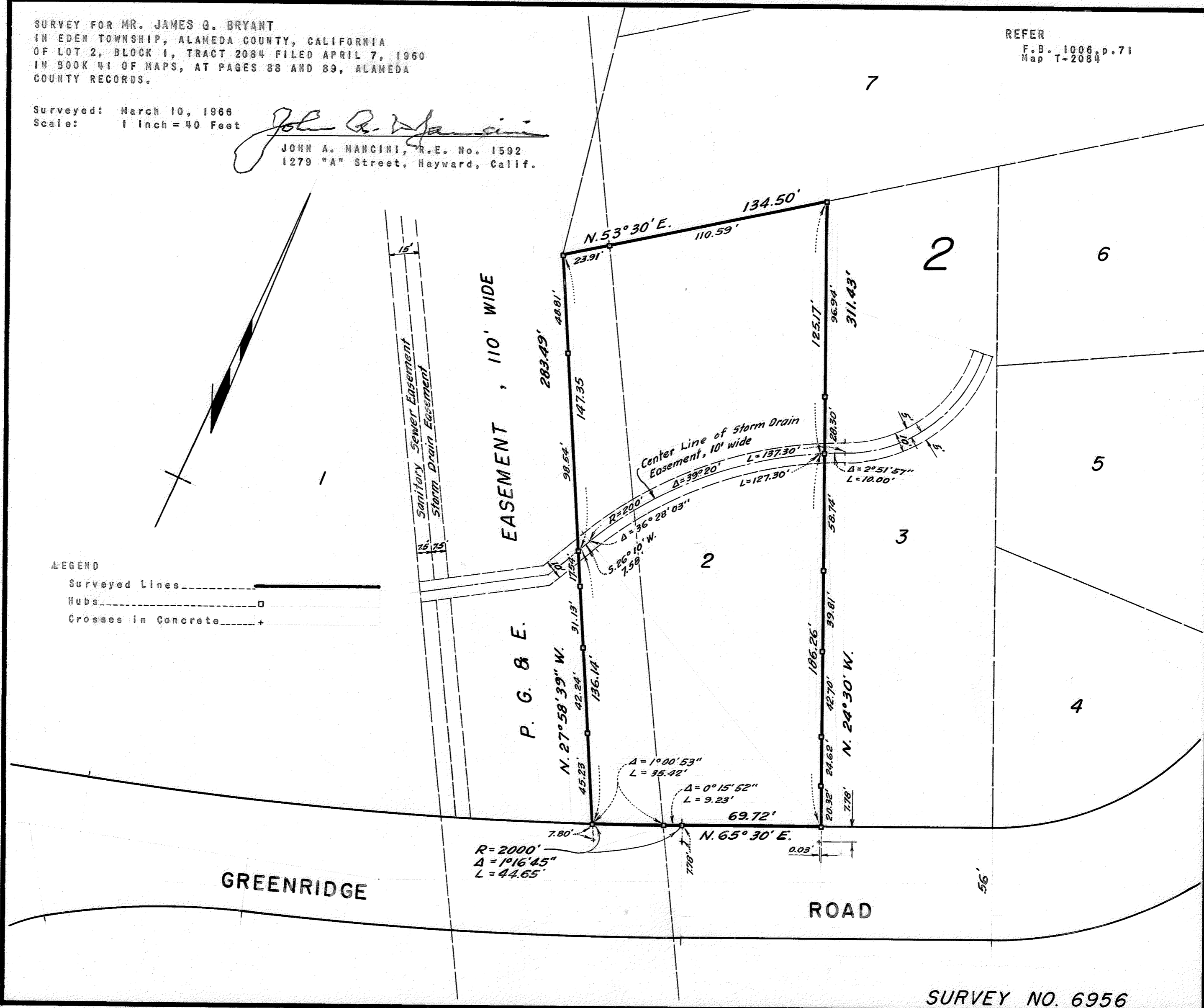
REFER
 F.B. 1006, p. 71
 Map T-2084

Surveyed: March 10, 1966
 Scale: 1 inch = 40 Feet

John A. Mancini
 JOHN A. MANCINI, R.E. No. 1592
 1279 "A" Street, Hayward, Calif.

LEGEND

- Surveyed Lines 
- Hubs 
- Crosses in Concrete 



SURVEY NO. 6956