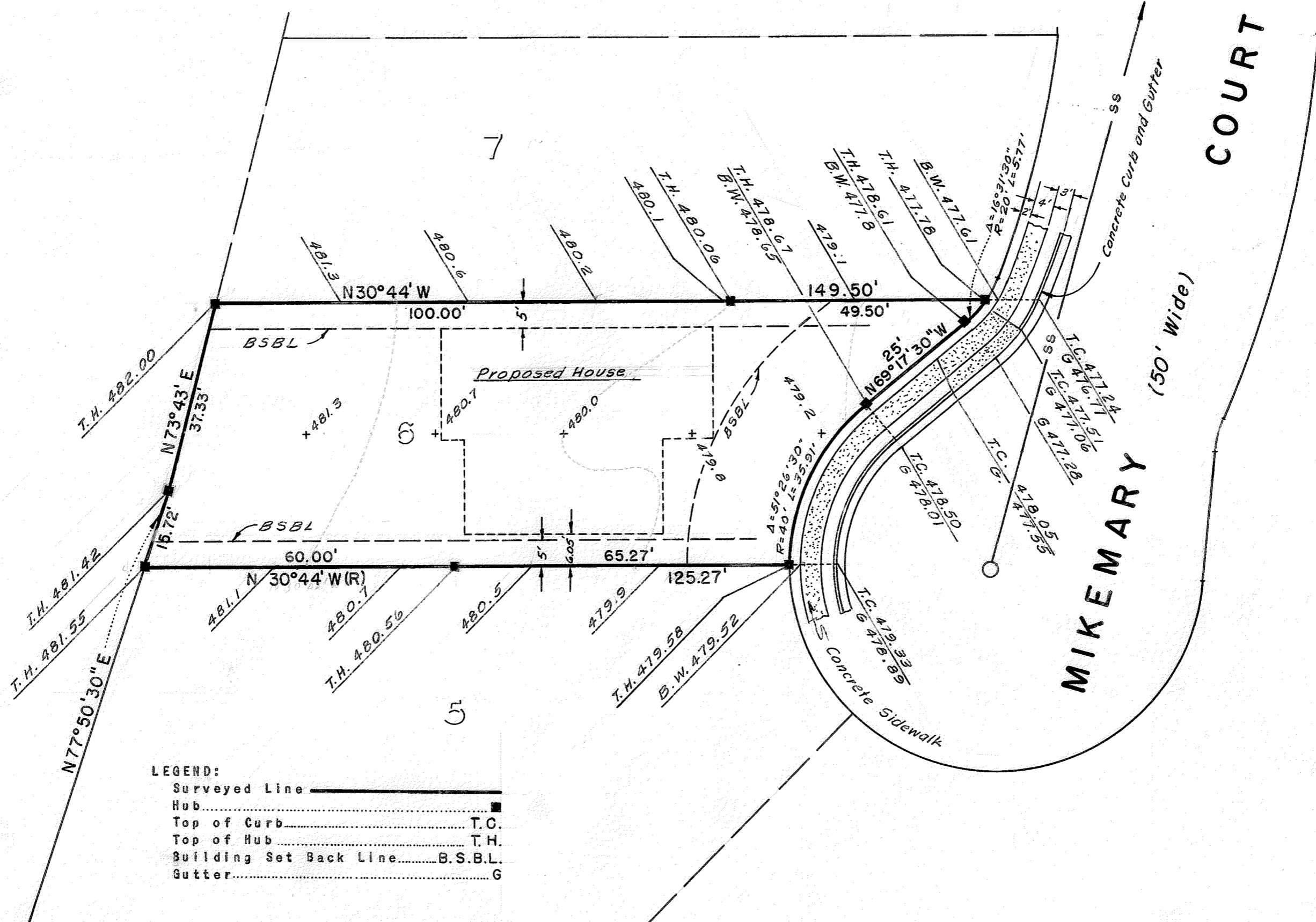
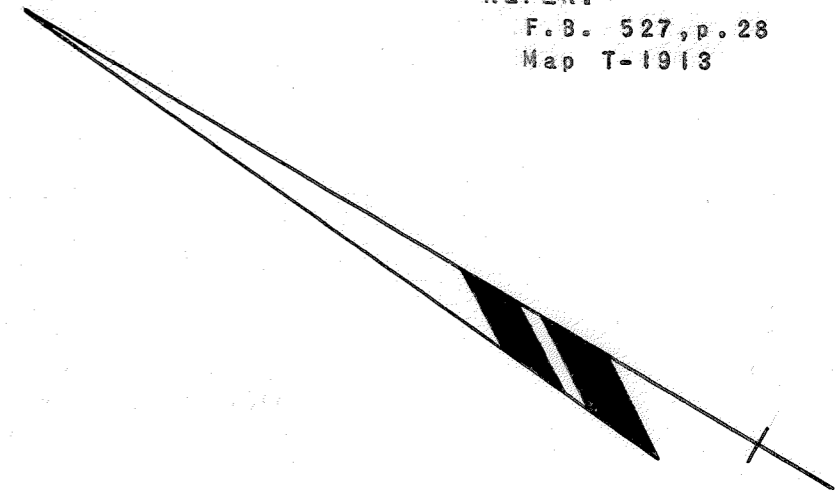


BOUNDARY AND TOPOGRAPHIC SURVEY FOR BUTI CONSTRUCTION CO., INC.
 IN EDEN TOWNSHIP, ALAMEDA COUNTY, CALIFORNIA
 OF LOT 6, TRACT 1913 FILED FEBRUARY 11, 1959 IN BOOK 39 OF MAPS,
 AT PAGE 48, ALAMEDA COUNTY RECORDS.

Surveyed: November 30, 1965
 Scale: 1 inch = 20 Feet
 Datum Elevation: U.S.C. & G.S. Base
 Contour Interval: One (1) Foot

John A. Mancini
 JOHN A. MANCINI, R.E. No. 1592
 1279 "A" Street, Hayward, Calif.

REFER:
 F.B. 527, p. 28
 Map T-1913



LEGEND:
 Surveyed Line —————
 Hub ————— ■
 Top of Curb ————— T.C.
 Top of Hub ————— T.H.
 Building Set Back Line ————— B.S.B.L.
 Gutter ————— G

SURVEY NO. 6902