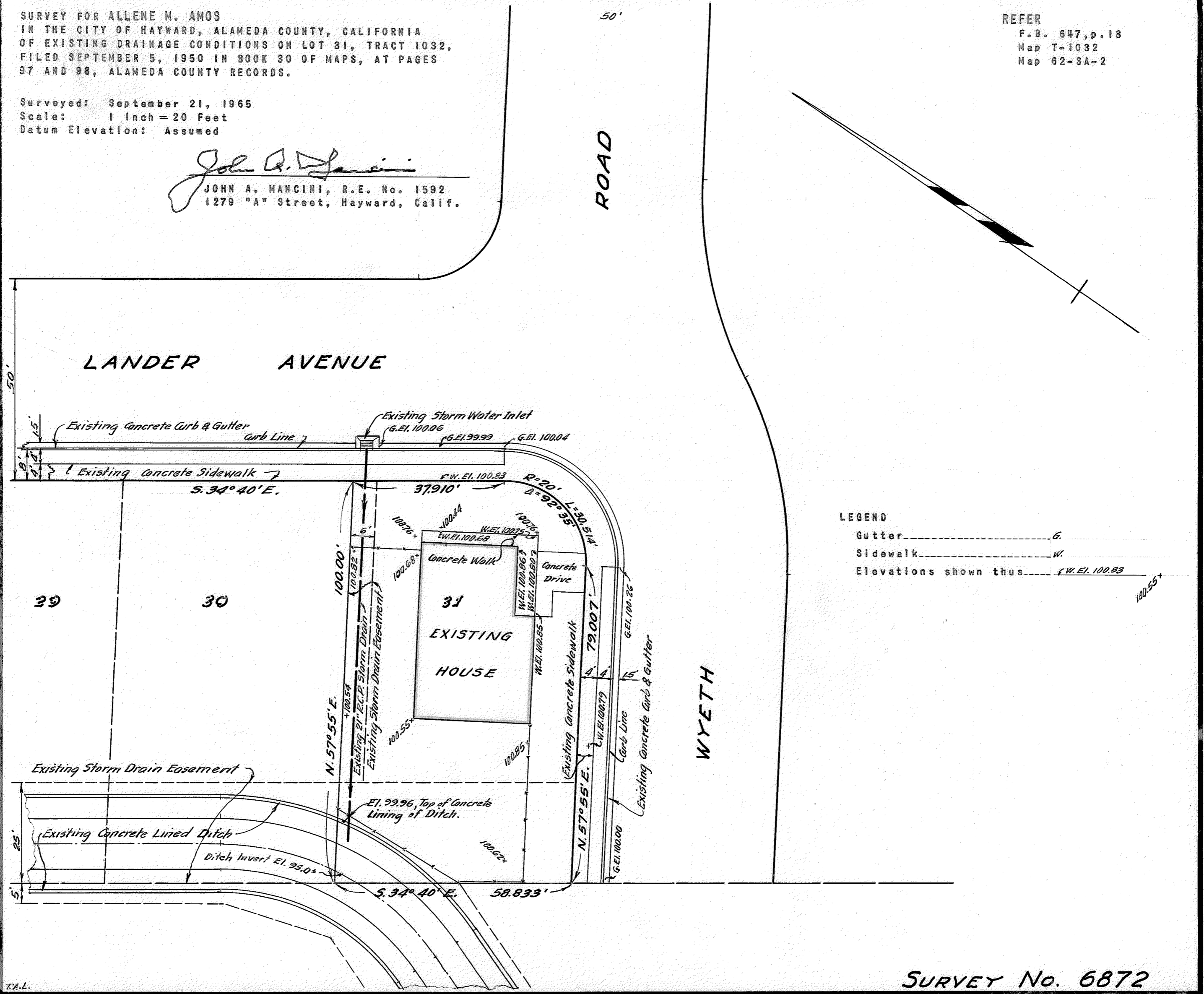


SURVEY FOR ALLENE M. AMOS
 IN THE CITY OF HAYWARD, ALAMEDA COUNTY, CALIFORNIA
 OF EXISTING DRAINAGE CONDITIONS ON LOT 31, TRACT 1032,
 FILED SEPTEMBER 5, 1950 IN BOOK 30 OF MAPS, AT PAGES
 97 AND 98, ALAMEDA COUNTY RECORDS.

Surveyed: September 21, 1965
 Scale: 1 inch = 20 Feet
 Datum Elevation: Assumed

John A. Mancini
 JOHN A. MANCINI, R.E. No. 1592
 1279 "A" Street, Hayward, Calif.

REFER
 F.B. 647, p. 18
 Map T-1032
 Map 62-3A-2



LEGEND
 Gutter ----- G.
 Sidewalk ----- W.
 Elevations shown thus ----- f.w. El. 100.83

SURVEY No. 6872

T.A.L.