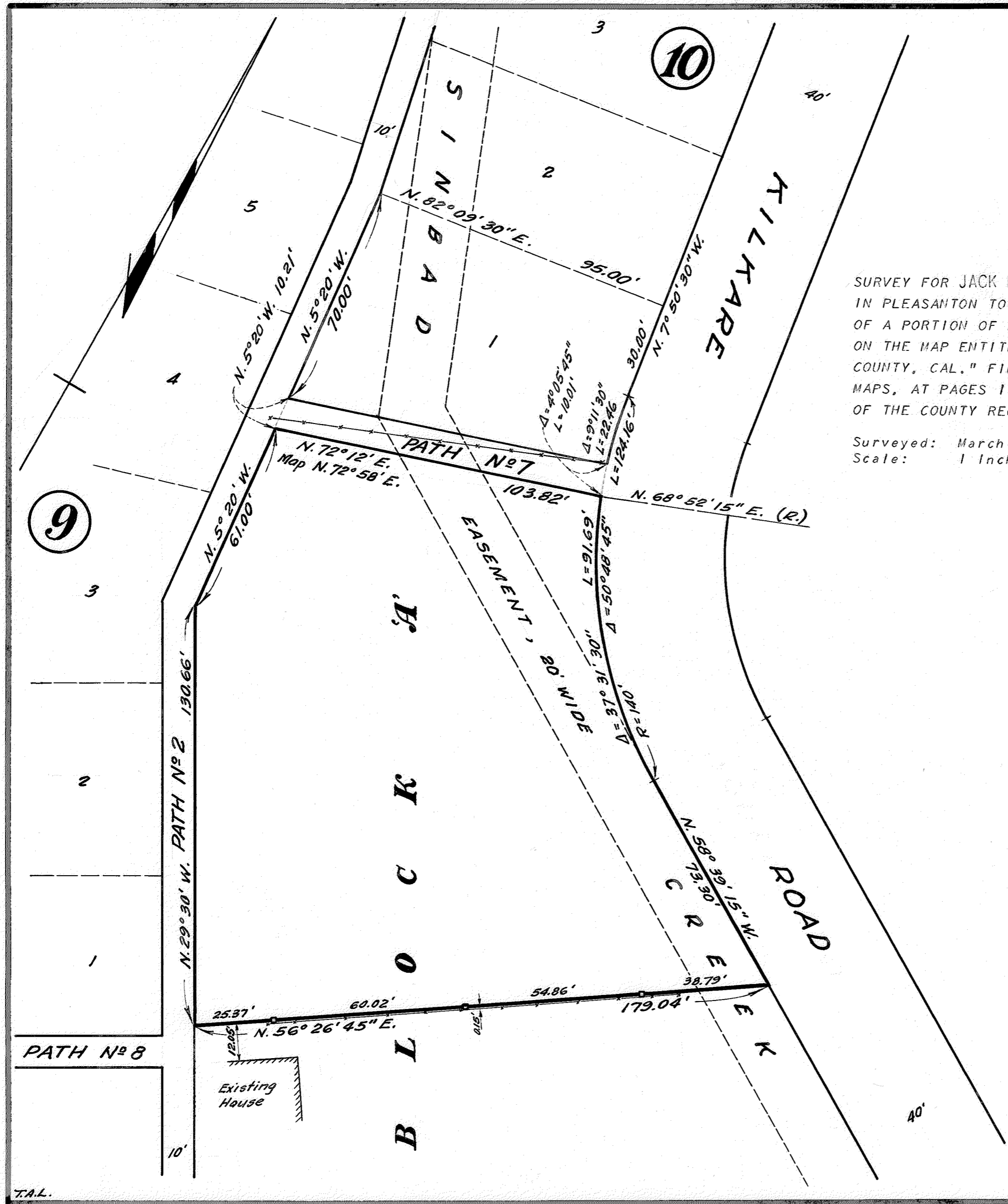


REFER  
 F.B. 1001, p. 79  
 Map T-113



SURVEY FOR JACK DOERR REALTY  
 IN PLEASANTON TOWNSHIP, ALAMEDA COUNTY, CALIFORNIA  
 OF A PORTION OF BLOCK "A", AS SAID BLOCK IS SHOWN  
 ON THE MAP ENTITLED "MAP OF KILKARE MANOR, ALAMEDA  
 COUNTY, CAL." FILED FEBRUARY 24, 1928 IN BOOK 17 OF  
 MAPS, AT PAGES 115 TO 123, INCLUSIVE, IN THE OFFICE  
 OF THE COUNTY RECORDER OF ALAMEDA COUNTY.

Surveyed: March 29, 1965  
 Scale: 1 Inch = 30 Feet

*John A. Mancini*  
 JOHN A. MANCINI, R.E. No. 1592  
 1279 "A" Street, Hayward, Calif.

LEGEND  
 Surveyed Line \_\_\_\_\_  
 Hubs \_\_\_\_\_  
 Boundary of Parcel \_\_\_\_\_  
 Fences \_\_\_\_\_

SURVEY No. 6772

T.A.L.