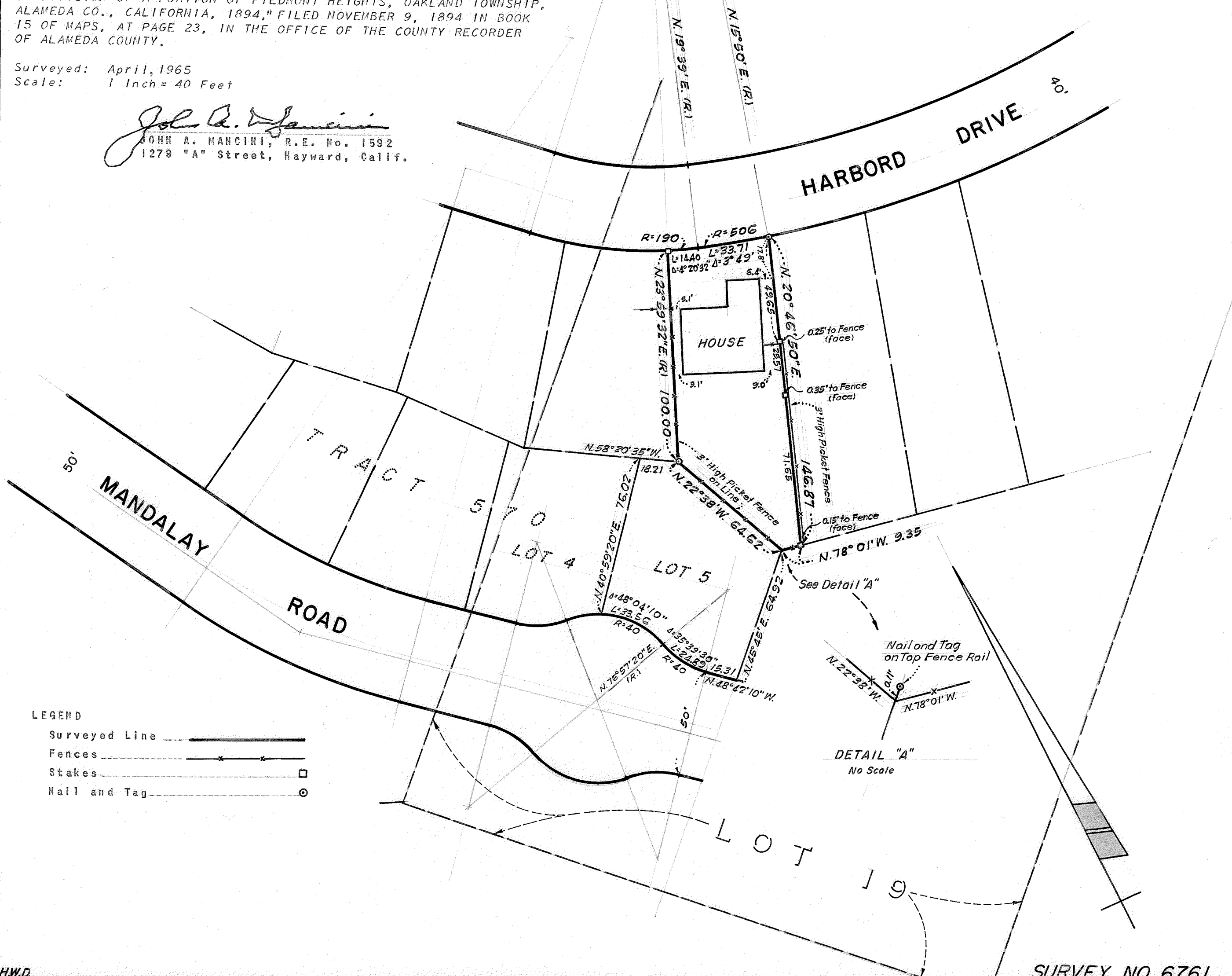


SURVEY FOR MR. JOSEPH E. CABIATI
 IN THE CITY OF OAKLAND, ALAMEDA COUNTY, CALIFORNIA
 OF A PORTION OF LOT 19, AS SAID LOT IS SHOWN ON THE "MAP OF A
 SUBDIVISION OF A PORTION OF PIEDMONT HEIGHTS, OAKLAND TOWNSHIP,
 ALAMEDA CO., CALIFORNIA, 1894," FILED NOVEMBER 9, 1894 IN BOOK
 15 OF MAPS, AT PAGE 23, IN THE OFFICE OF THE COUNTY RECORDER
 OF ALAMEDA COUNTY.

REFER
 Notes in File
 Map T-570

Surveyed: April, 1965
 Scale: 1 Inch = 40 Feet

John A. Mancini
 JOHN A. MANCINI, R.E. No. 1592
 1279 "A" Street, Hayward, Calif.



LEGEND
 Surveyed Line —————
 Fences - - - - - x x x
 Stakes - - - - - □
 Nail and Tag - - - - - ⊙

