

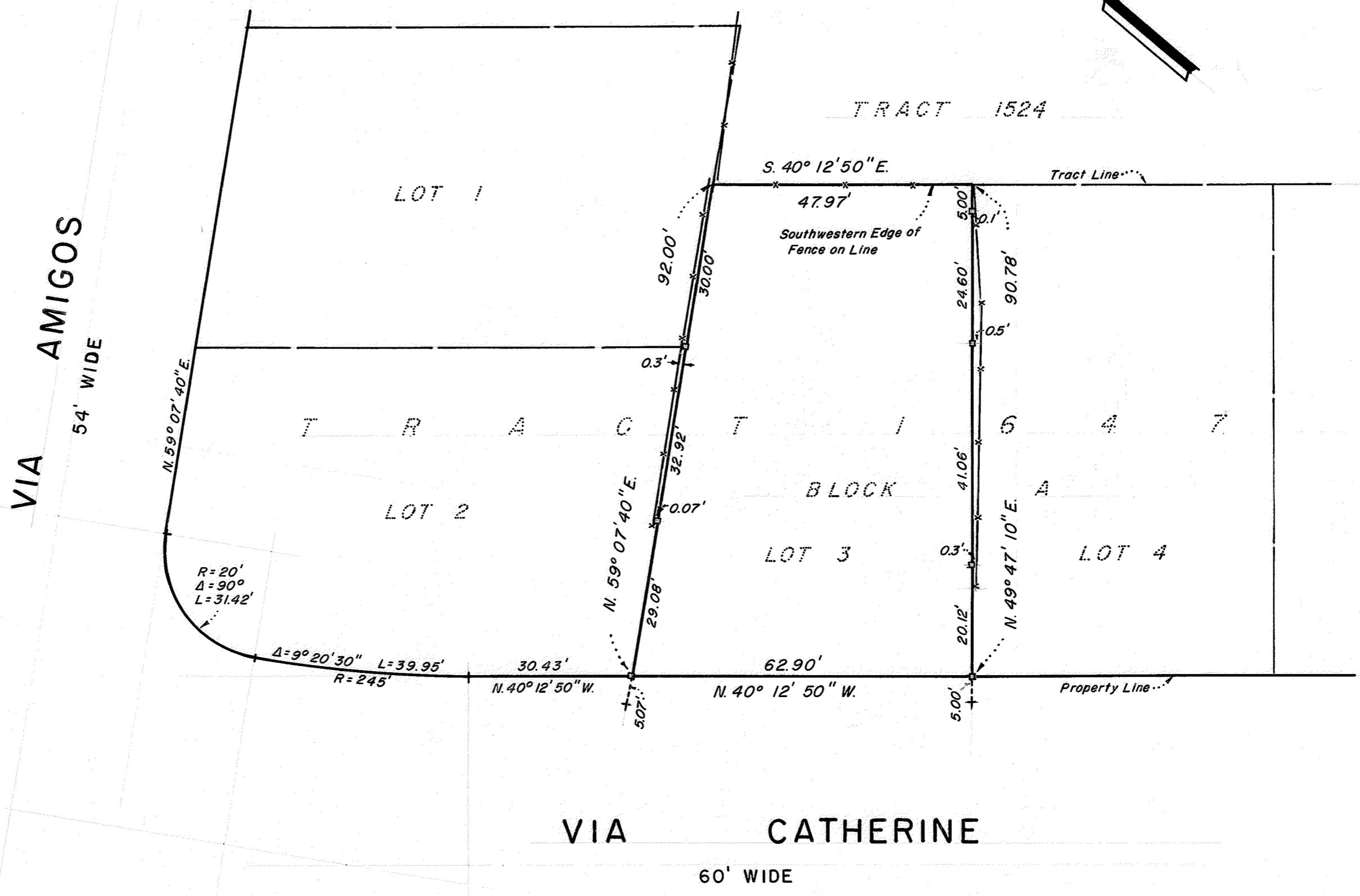
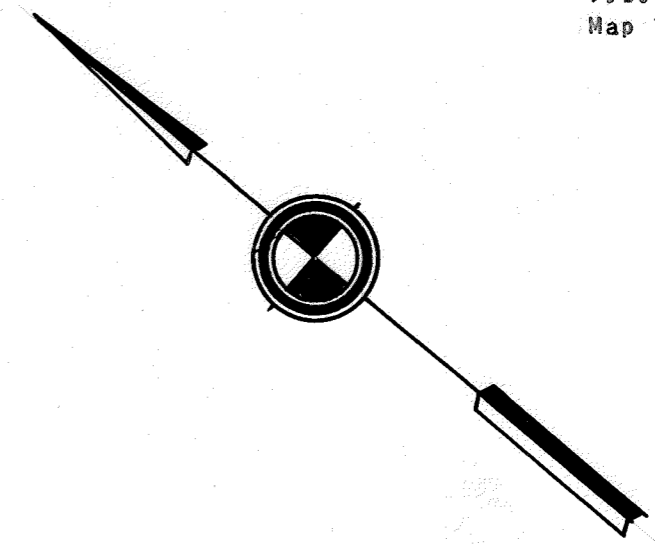
SURVEY FOR MR. REUBEN B. HURD
 IN EDEN TOWNSHIP, ALAMEDA COUNTY, CALIFORNIA
 OF LOT 3, BLOCK A, TRACT 1647 FILED APRIL 27, 1956 IN BOOK
 37 OF MAPS, AT PAGE 15, IN THE OFFICE OF THE COUNTY RECORDER
 OF ALAMEDA COUNTY

REFER
 F.B. 1010, p.48, p.24
 Map T-1647

Surveyed: January, 1968
 Scale: 1 Inch=20 Feet

John A. Mancini
 JOHN A. MANCINI, R.E. No. 1592
 1279 "A" Street, Hayward, Calif.

LEGEND
 Surveyed Lines —————
 Hubs □
 Crosses in Concrete +
 Fences -x-x-x-



H.W.D.

SURVEY NO. 6707A