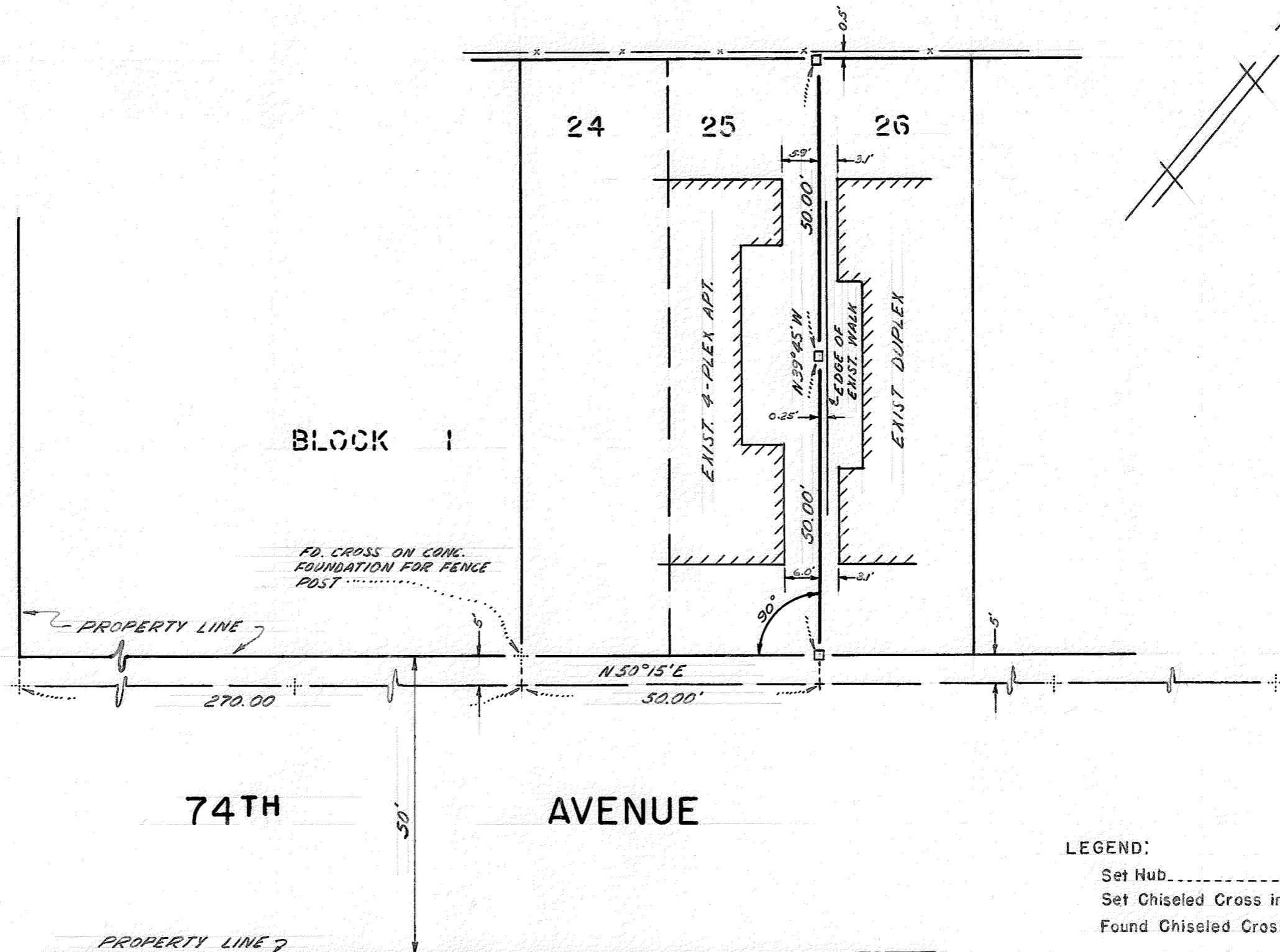


SURVEY FOR MR. WILLIAM R. RAAB  
IN THE CITY OF OAKLAND, ALAMEDA COUNTY, CALIFORNIA,  
OF THE LINE DIVIDING LOTS 25 AND 26, BLOCK I,  
MELROSE EXTENSION TRACT.

Surveyed: October 9, 1964  
Scale: 1 Inch = 20 Feet

*John A. Mancini*  
JOHN A. MANCINI, R. E. NO. 1592  
1279 "A" Street, Hayward, California

GARFIELD AVENUE



LEGEND:  
Set Hub ..... □  
Set Chiseled Cross in Sidewalk ..... +  
Found Chiseled Cross in Sidewalk ..... +