

SURVEY FOR Mr. GEORGE GRIFFITH
IN EDEN TOWNSHIP, ALAMEDA COUNTY, CALIFORNIA

Surveyed: October 31, 1961
Scale: 1 Inch = 20 Feet

John A. Mancini
JOHN A. MANCINI, P.E. No. 1592
1279 "A" Street, Hayward, Calif.

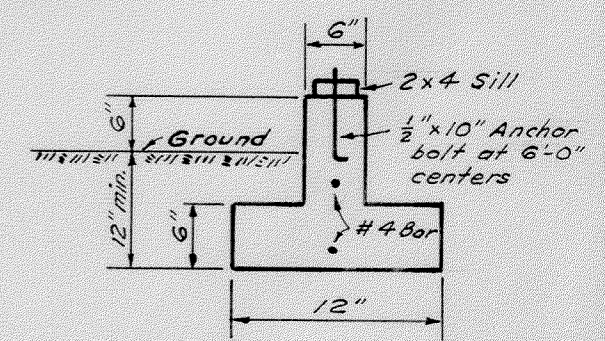


LEGEND
Surveyed Lines _____
Hubs _____
Fences _____

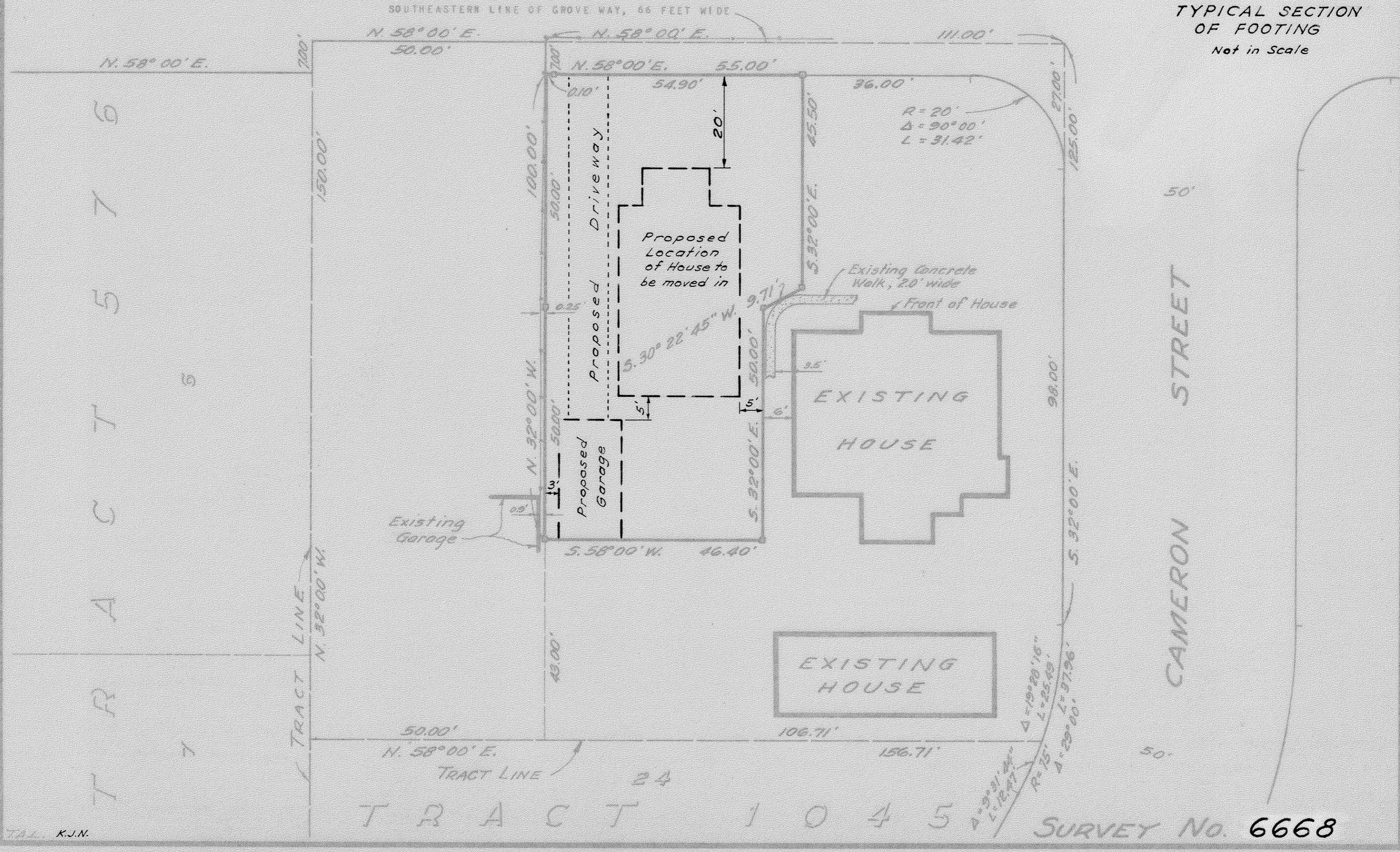
REFER
F.B. 82, p. 77
Maps T-1045
T-576
Survey No. 5885

GROVE WAY (FORMERLY "A" STREET)

Revised July 21, 1964



TYPICAL SECTION OF FOOTING
Not in Scale



TAL. K.J.N.

SURVEY No. 6668