

BOUNDARY SURVEY FOR ORR, HEURING & WENDEL, ATTORNEYS AT LAW
 IN EDEN TOWNSHIP, ALAMEDA COUNTY, CALIFORNIA

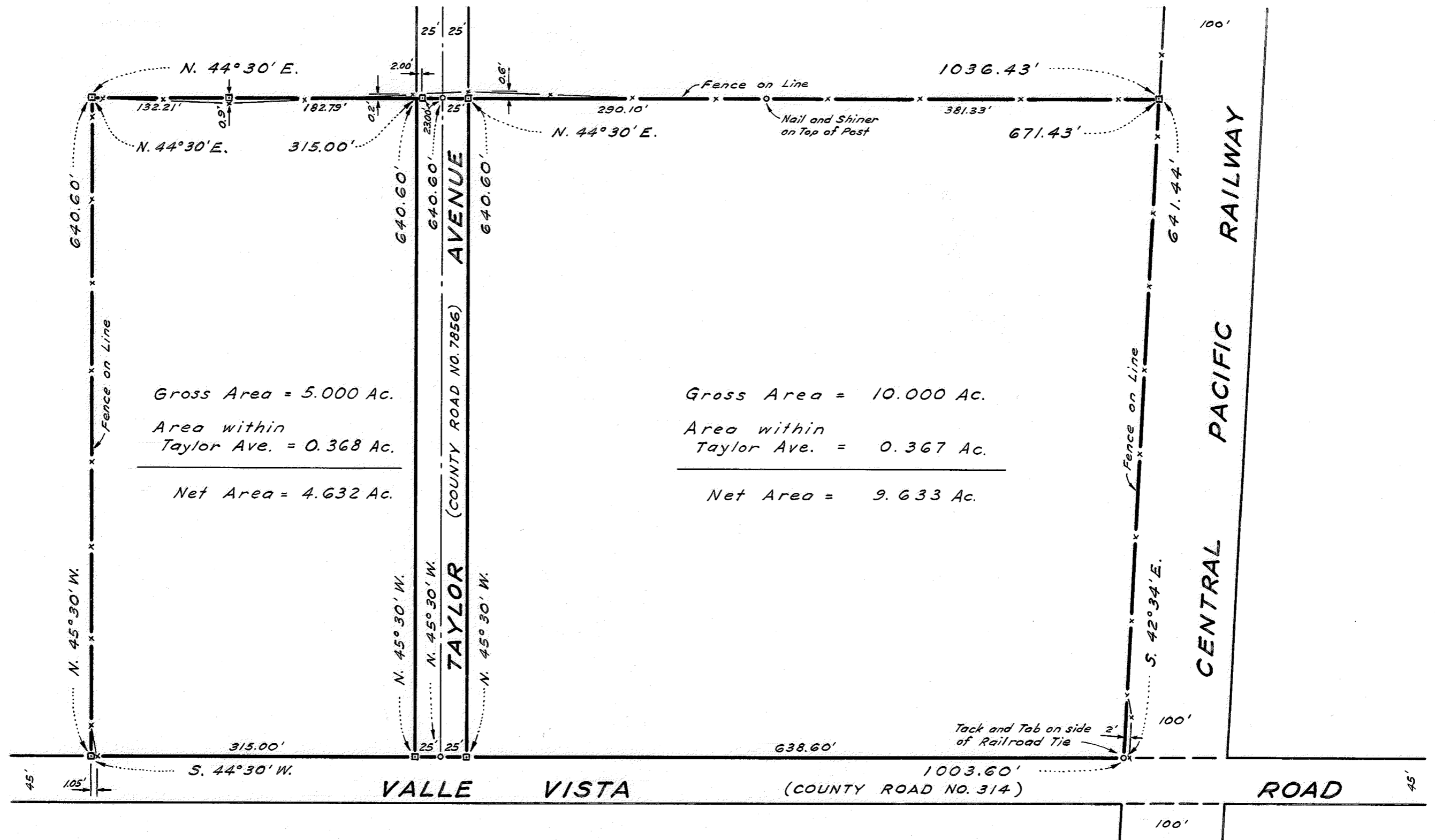
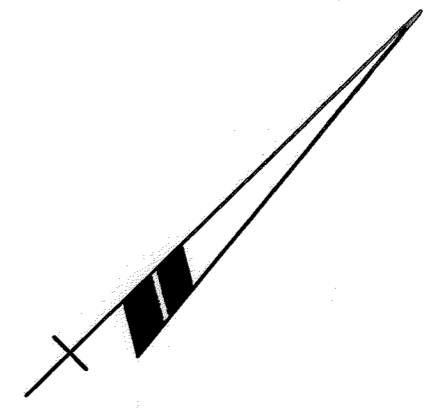
Surveyed: January 3, 1964
 Scale: 1 Inch = 100 Feet

John A. Mancini
 JOHN A. MANCINI, R.E. No. 1592
 1279 "A" Street, Hayward, Calif.

LEGEND

- Surveyed Line.....
- Existing Fence.....x.....x.....
- Center Line.....
- Hub Set.....□
- Nail & Shiner Set.....○

REFER
 F.B. 1007, p. 31
 Map 23-1B
 26-4-84
 Survey No. 6088



Gross Area = 5.000 Ac.
 Area within
 Taylor Ave. = 0.368 Ac.

 Net Area = 4.632 Ac.

Gross Area = 10.000 Ac.
 Area within
 Taylor Ave. = 0.367 Ac.

 Net Area = 9.633 Ac.