

SURVEY FOR LEON M. WHEATLEY, INC.  
 IN EDEN TOWNSHIP, ALAMEDA COUNTY, CALIFORNIA  
 OF CONTROL LINES FOR THE CONSTRUCTION OF LORIN A.  
 EDEN ELEMENTARY SCHOOL OF HAYWARD UNIFIED SCHOOL  
 DISTRICT, ALAMEDA COUNTY, CALIFORNIA

Surveyed: October 3, 1963  
 Scale: 1 Inch = 40 Feet

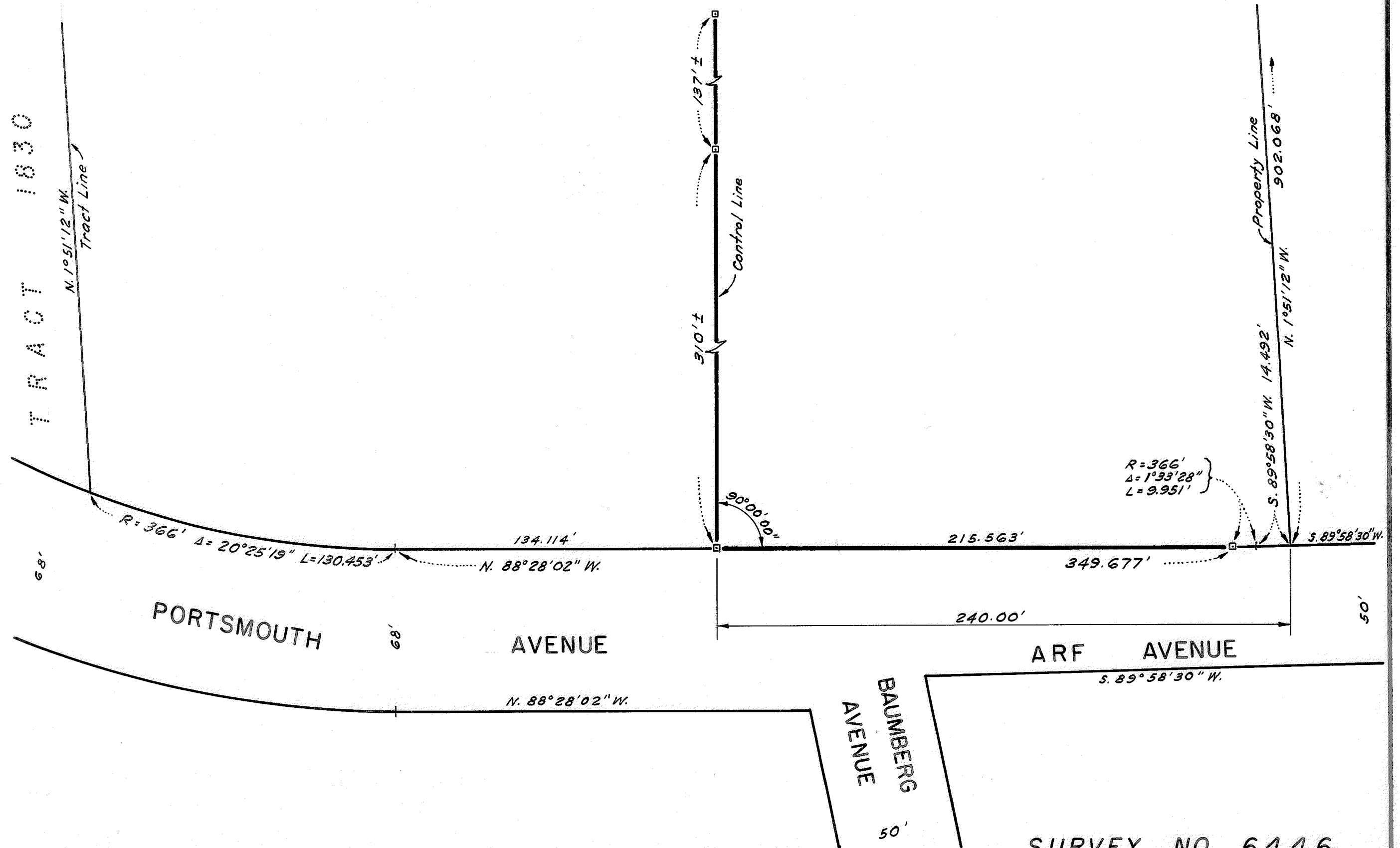
*John A. Mancini*  
 JOHN A. MANCINI, R.E. No. 1592  
 1279 "A" Street, Hayward, Calif.

LEGEND

Surveyed Line —————  
 Hub Set ————□

REFER

Note in File  
 F.B. 586, p. 1  
 Survey No. 6234, 6303  
 Map 38-57



SURVEY NO. 6446