

BOUNDARY AND TOPOGRAPHIC SURVEY FOR MR. TOMY BRUNE
IN UNION CITY, ALAMEDA COUNTY, CALIFORNIA

Surveyed: August 29, 1963

Scale: 1 Inch = 20 Feet

Datum Elevation: U.S.C. & G.S. Base

John A. Mancini
JOHN A. MANCINI, R.E. No. 1592
1279 "A" Street, Hayward, Calif.

REFER
F.B. 493, p. 33

LEGEND

Surveyed Line -----

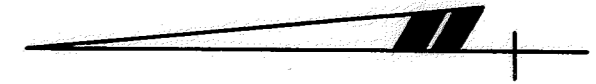
Center Line -----

Hub Set -----

Elevation shown thus:

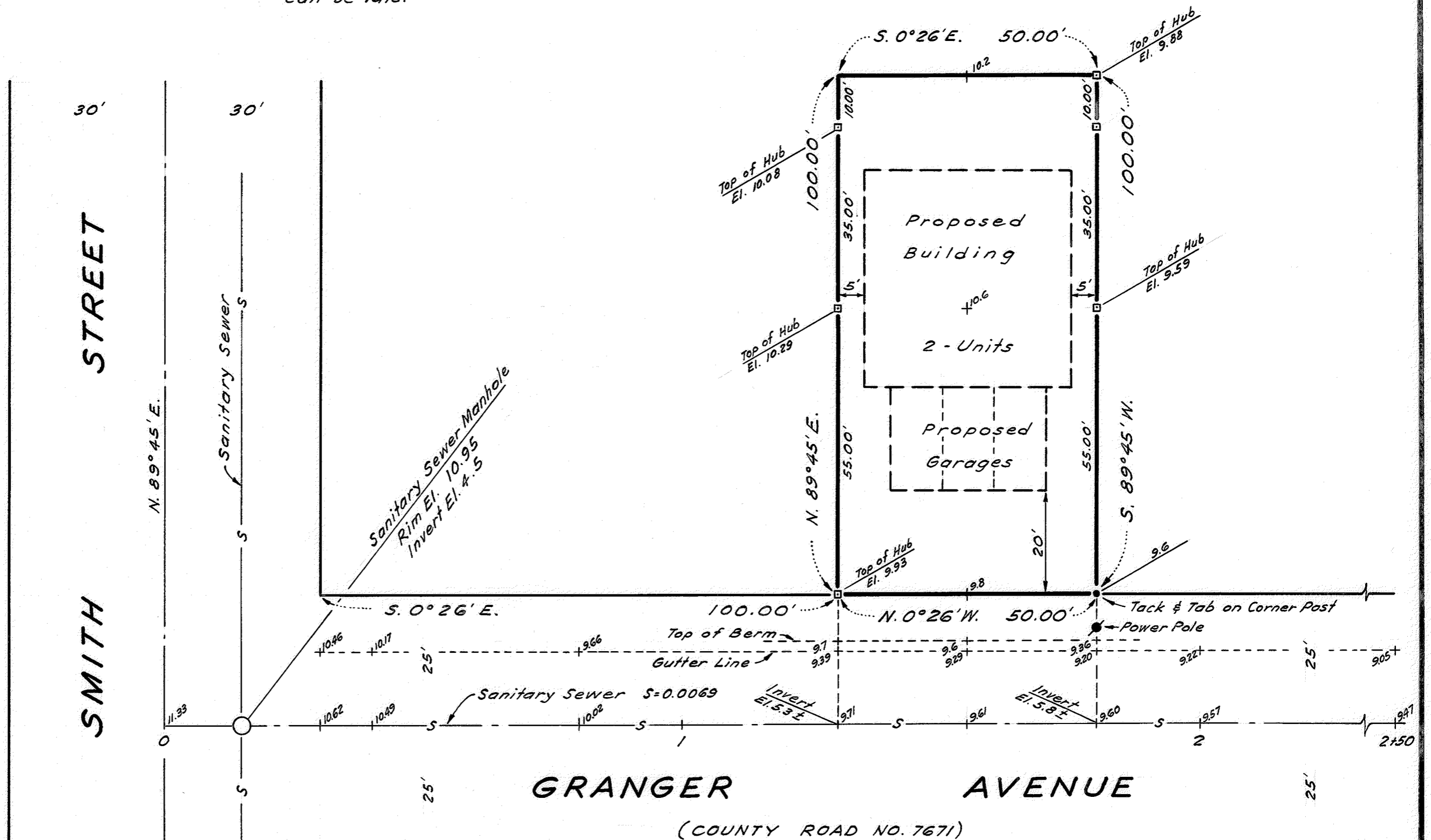
$\frac{\text{Top of Hub}}{\text{El. 10.08}}$ 9.6 10.6+

El. = Elevation



Note

Invert elevations of Sanitary Sewer must be verified in the field before side sewer can be laid.



KJN

SURVEY NO. 6418

Sheet 1 of 2 Sheets