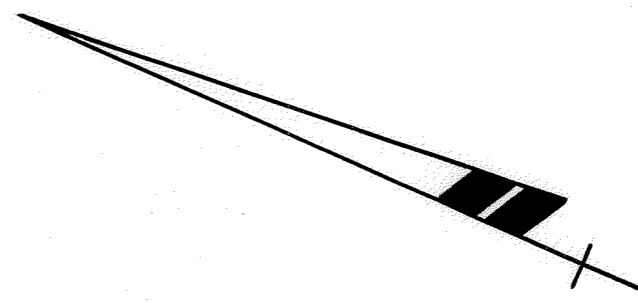


BOUNDARY AND TOPOGRAPHIC SURVEY FOR MR. L. W. ASHE
 IN EDEN TOWNSHIP, ALAMEDA COUNTY, CALIFORNIA
 OF LOT 26 IN BLOCK "P", AS SAID LOT AND BLOCK ARE SHOWN ON
 THE MAP OF "EAST OAKLAND TERRACE", ETC. FILED DECEMBER 23,
 1925 IN BOOK 5 OF MAPS, AT PAGES 42 AND 43, IN THE OFFICE
 OF THE COUNTY RECORDER OF ALAMEDA COUNTY.

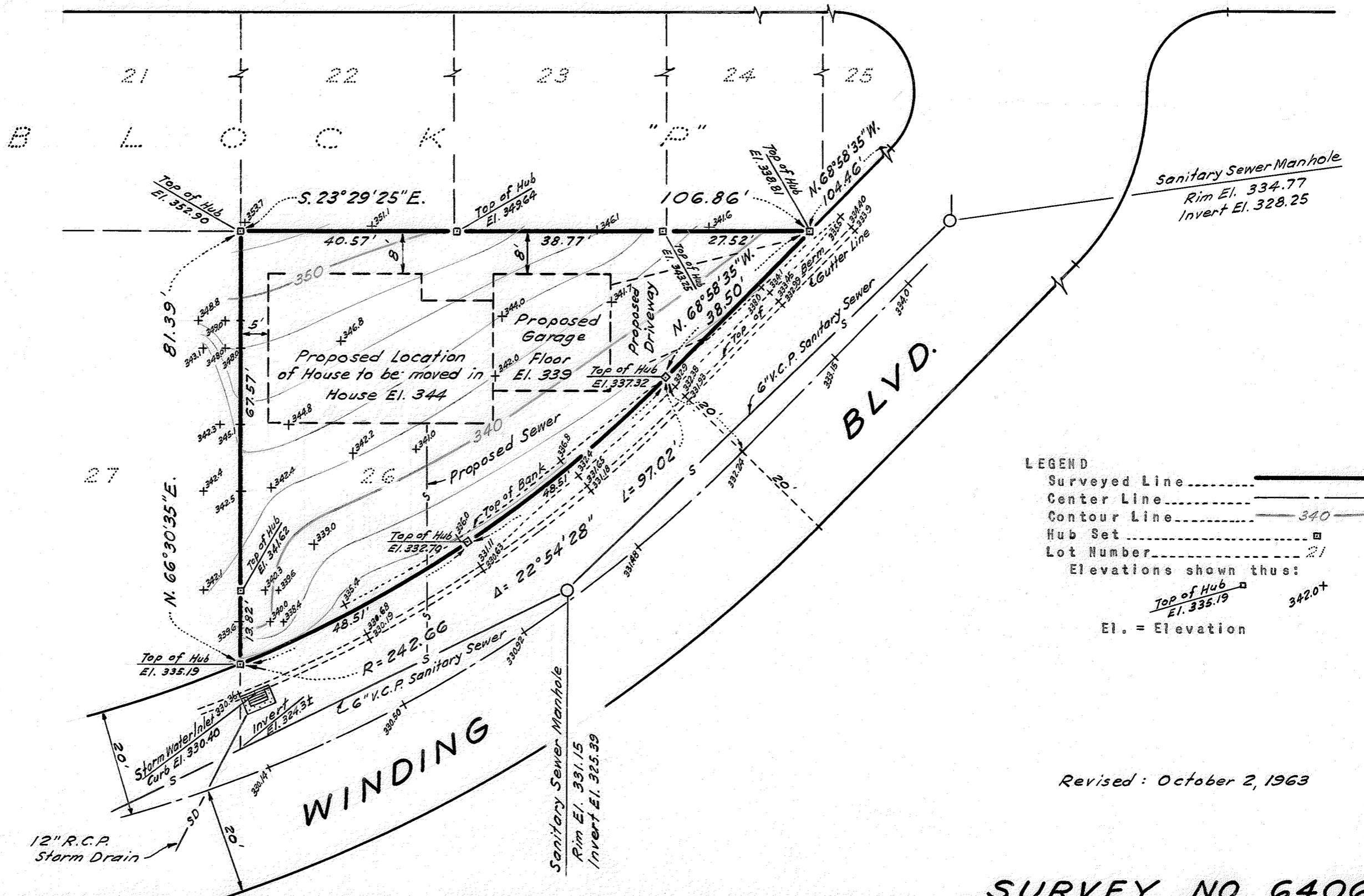
REFER
 F.B. 96, p. 56
 Survey No. 6150
 Map 9-13,9-13A,
 T-57

Surveyed: August 12, 1963
 Scale: 1 Inch = 20 Feet
 Datum Elevation: U.S.C. & G.S. Base
 Contour Interval: Two (2) Feet

John A. Mancini
 JOHN A. MANCINI, R.E. No. 1592
 1279 "A" Street, Hayward, Calif.



ROLANDO (FORMERLY CRESTON DRIVE) AVENUE
 (40' WIDE)



LEGEND
 Surveyed Line
 Center Line
 Contour Line 340
 Hub Set
 Lot Number 21
 Elevations shown thus:
 Top of Hub El. 335.19 342.0+
 El. = Elevation

Revised: October 2, 1963

SURVEY NO. 6406