

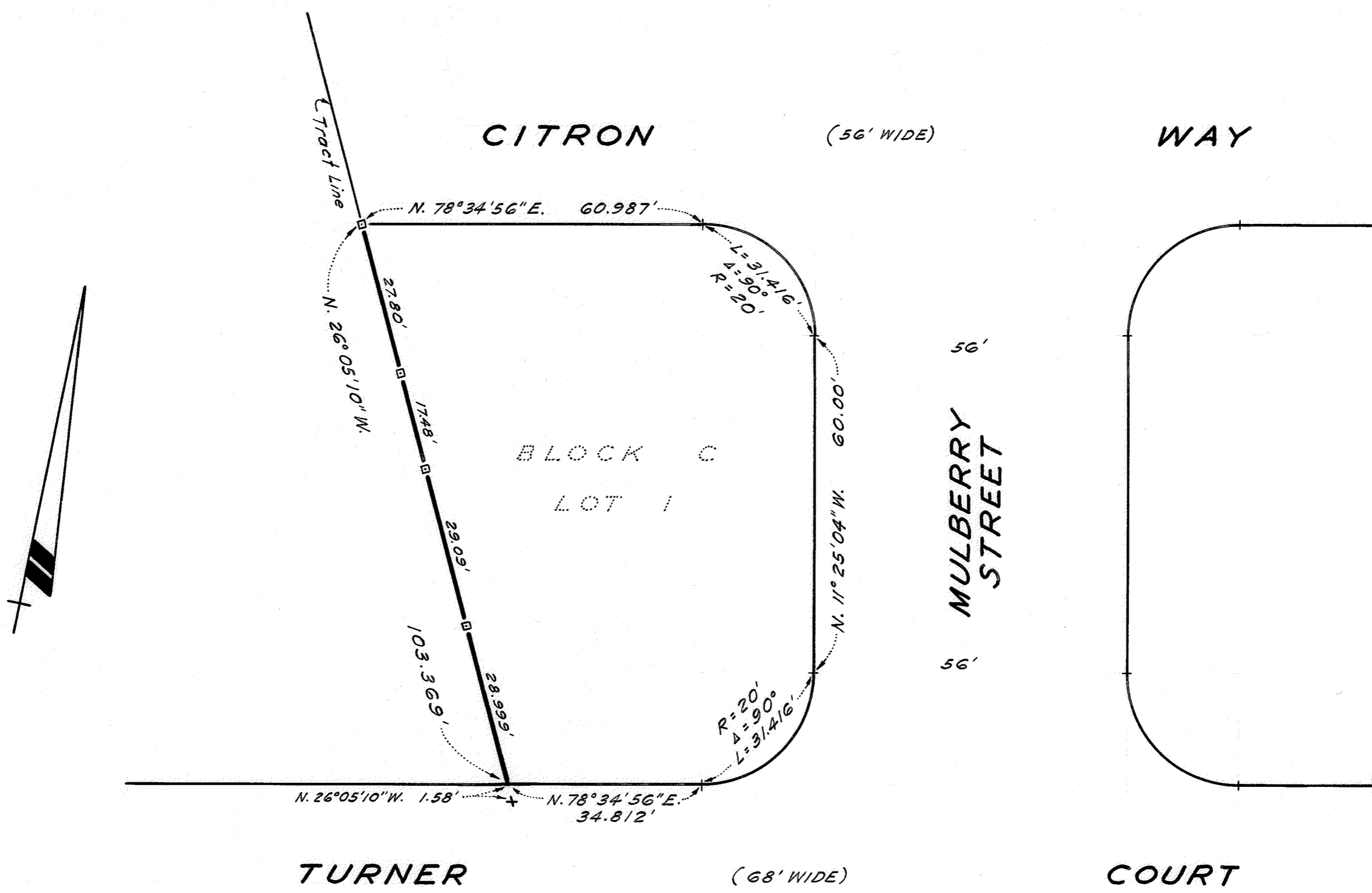
SURVEY FOR CLIFF HOUSE REALTY
 IN THE CITY OF HAYWARD, ALAMEDA COUNTY, CALIFORNIA
 OF LOT 1 IN BLOCK "C", AS SAID LOT AND BLOCK ARE SHOWN
 ON THE MAP OF "TRACT 1950", ETC. FILED SEPTEMBER 4, 1959
 IN BOOK 41 OF MAPS, AT PAGES 13 AND 14, IN THE OFFICE OF
 THE COUNTY RECORDER OF ALAMEDA COUNTY.

REFER
 F.B. 98, p.65

Surveyed: June 14, 1963
 Scale: 1 Inch = 20 Feet

John A. Mancini
 JOHN A. MANCINI, R.E. No. 1592
 1279 "A" Street, Hayward, Calif.

LEGEND
 Surveyed Line _____
 Hub Set _____ □
 Cross Cut in Concrete _____ †



K.J.N.

SURVEY NO. 6370