

SURVEY FOR DELLA M. PARKER
 IN THE CITY OF LIVERMORE, ALAMEDA COUNTY, CALIFORNIA
 OF LOTS 11 AND 12 IN BLOCK 8 OF THE TOWN OF LIVERMORE,
 ACCORDING TO THE MAP THEREOF FILED NOVEMBER 4, 1869 IN
 BOOK 5 OF MAPS, AT PAGE 9, IN THE OFFICE OF THE COUNTY
 RECORDER OF ALAMEDA COUNTY.

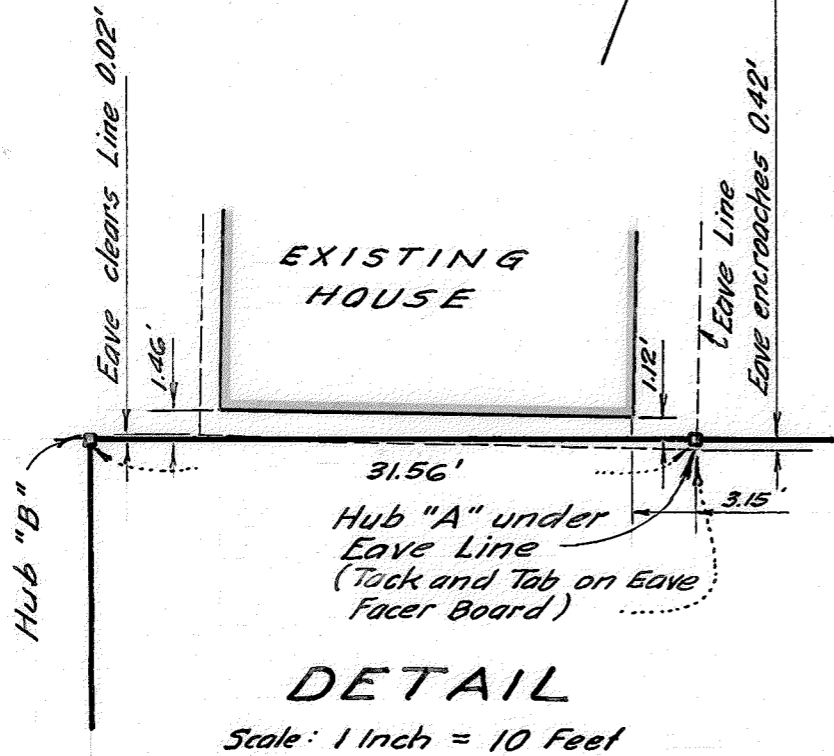
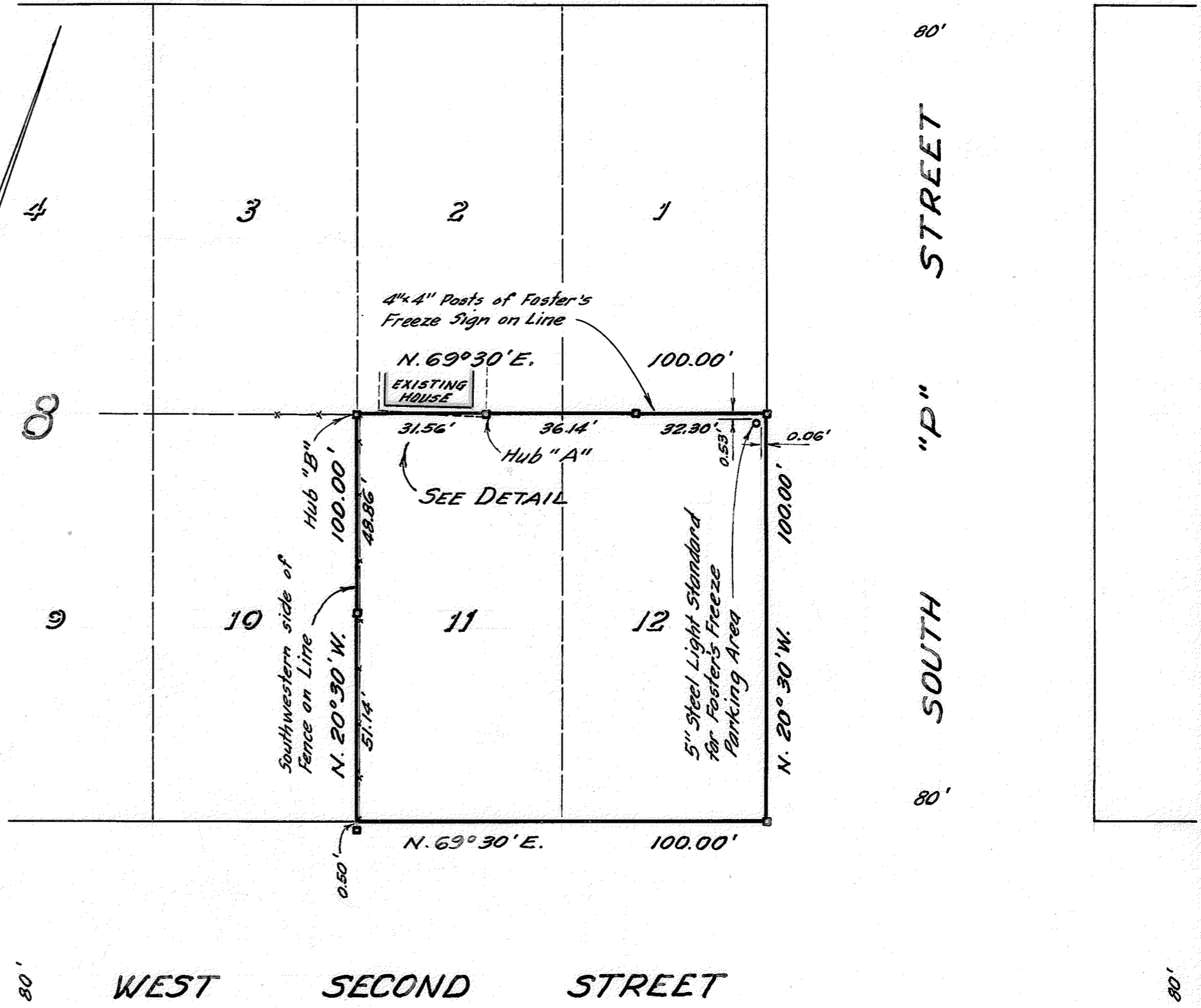
REFER
 F.B. 97, p. 55
 City of Livermore
 Monument Map

Surveyed: May 24, 1963
 Scale: 1 Inch = 30 Feet

John A. Mancini
 JOHN A. MANCINI, R.E. No. 1592
 1279 "A" Street, Hayward, Calif.

WEST FIRST STREET
 87' WIDE

LEGEND
 Surveyed Lines —————
 Hubs ————□———
 Fence ————x———
 Lot Lines - - - - -



DETAIL
 Scale: 1 Inch = 10 Feet

WEST SECOND STREET

SURVEY No. 6353

T.A.L.