

SURVEY FOR LAW-KER CONSTRUCTION CO.
 IN EDEN TOWNSHIP, ALAMEDA COUNTY, CALIFORNIA

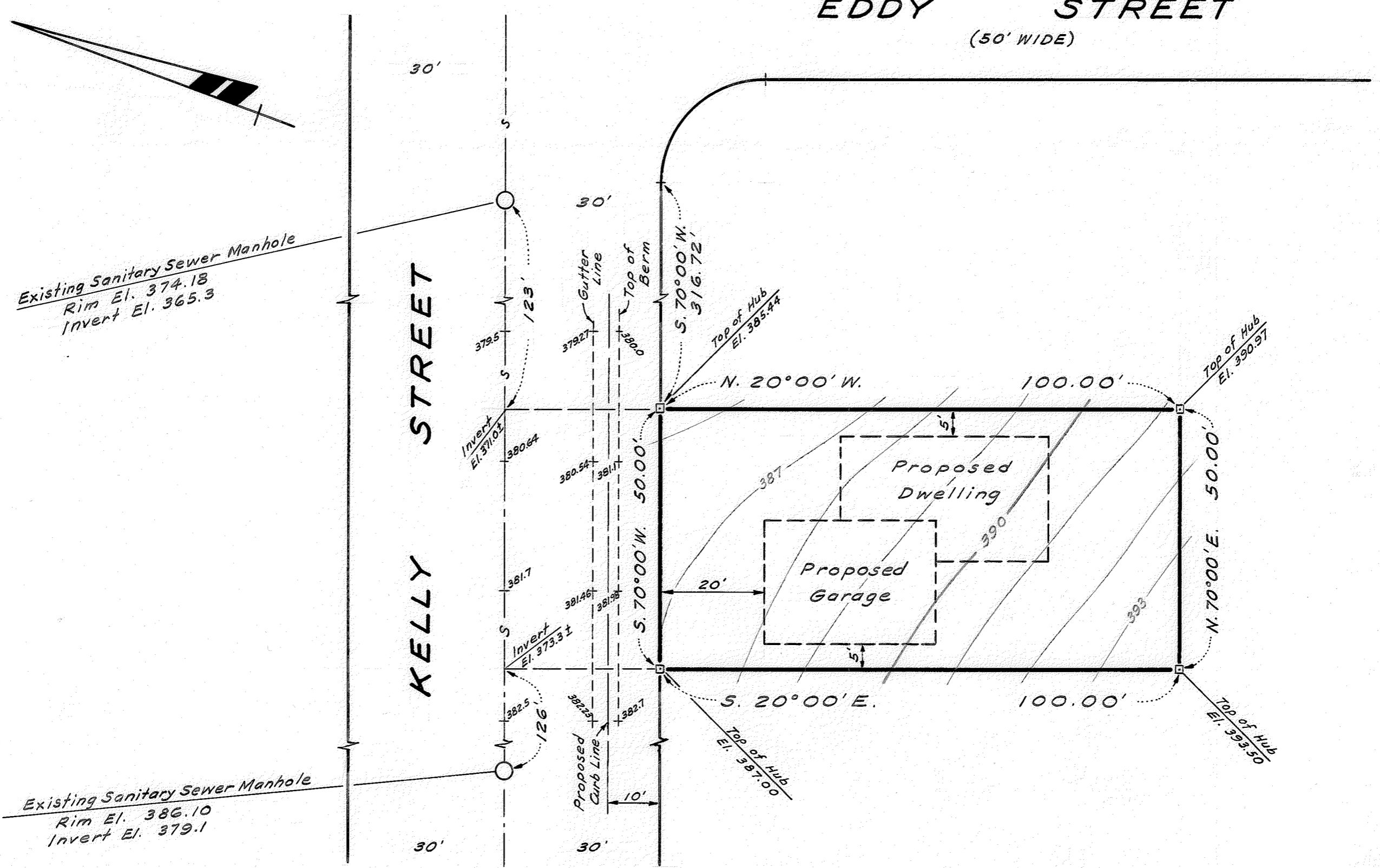
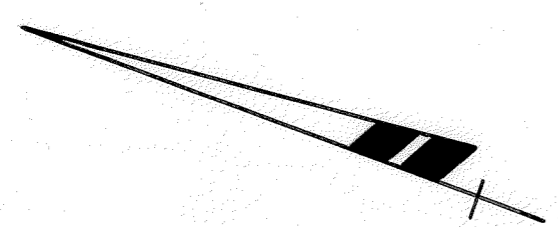
REFER
 F.B. 573, p. 24-31

Surveyed: September 1964
 Scale: 1 Inch = 20 Feet
 Datum Elevation: Mean Sea Level
 Contour Interval: One Foot

LEGEND:
 Surveyed Line _____
 Stakes □
 Sanitary Sewers _____ S _____
 Elevations are shown thus:

John A. Mancini
 JOHN A. MANCINI, R.E. No. 1592
 1279 "A" Street, Hayward, Calif.

x381.1
 Top of Hub
 El. 385.00



K.V.N.

SURVEY NO. 6221-B