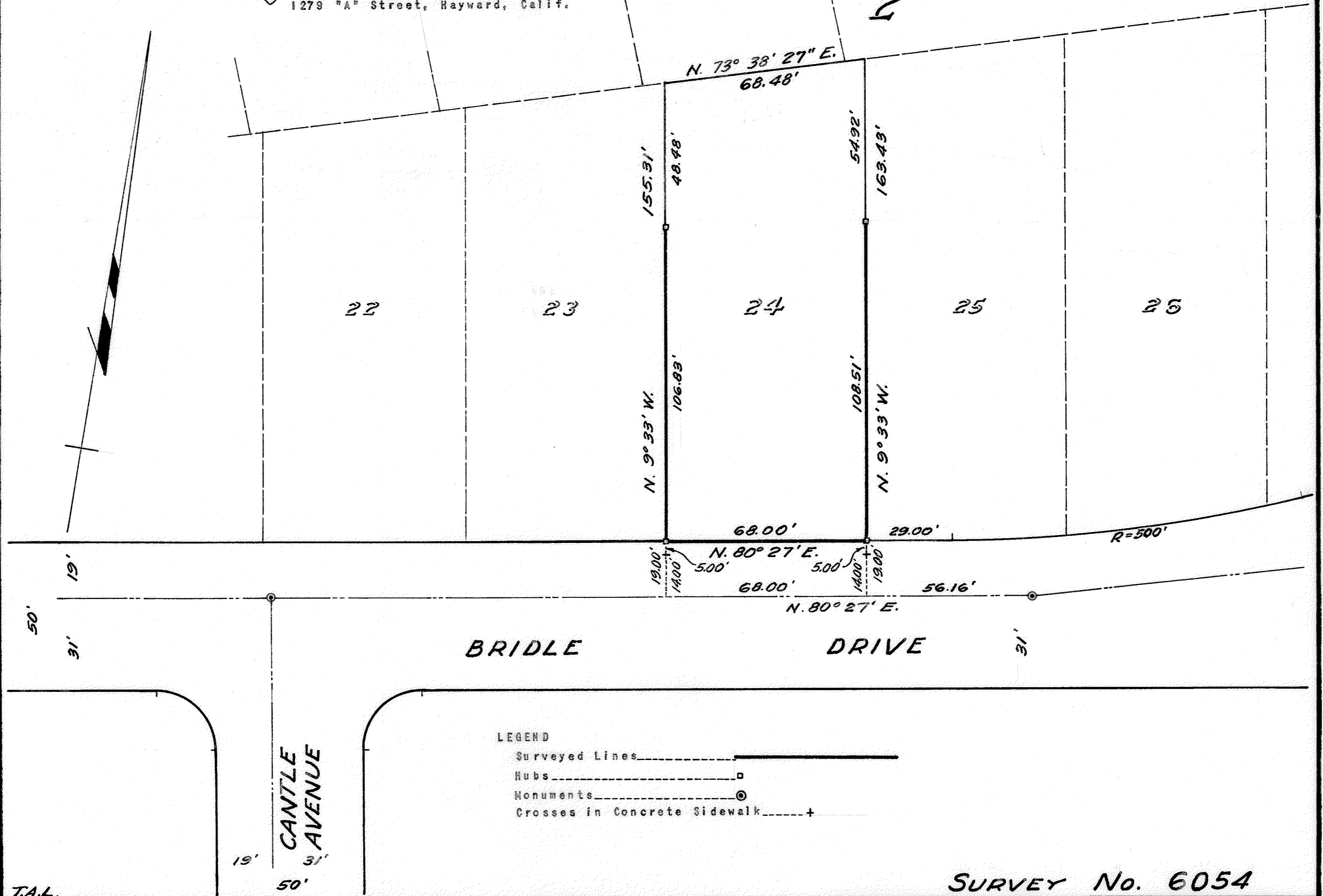


SURVEY FOR ASMUSSEN & POWELL  
 IN EDEN TOWNSHIP, ALAMEDA COUNTY, CALIFORNIA  
 OF LOT 24 IN BLOCK 2, TRACT 2016, FILED JULY 27, 1959 IN  
 BOOK 41 OF MAPS, AT PAGES 8 AND 9, IN THE OFFICE OF THE  
 COUNTY RECORDER OF ALAMEDA COUNTY.

REFER  
 F.B. 86, p. 47  
 Map T-2016

Surveyed: May 2, 1962  
 Scale: 1 Inch = 30 Feet

*John A. Mancini*  
 JOHN A. MANCINI, R.E. No. 1592  
 1279 "A" Street, Hayward, Calif.



LEGEND

- Surveyed Lines \_\_\_\_\_
- Hubs \_\_\_\_\_ □
- Monuments \_\_\_\_\_ ⊙
- Crosses in Concrete Sidewalk \_\_\_\_\_ +

T.A.L.

SURVEY No. 6054