




**SURVEY FOR SPEEDSPACE CORPORATION  
IN THE CITY OF FREMONT, ALAMEDA COUNTY, CALIFORNIA  
OF CONTROLS FOR BUILDING CONSTRUCTION AT OHLONE COLLEGE**

Surveyed: August 20, 1968  
Scale: 1 Inch=40 Feet  
Datum Elevations: Ohlone College

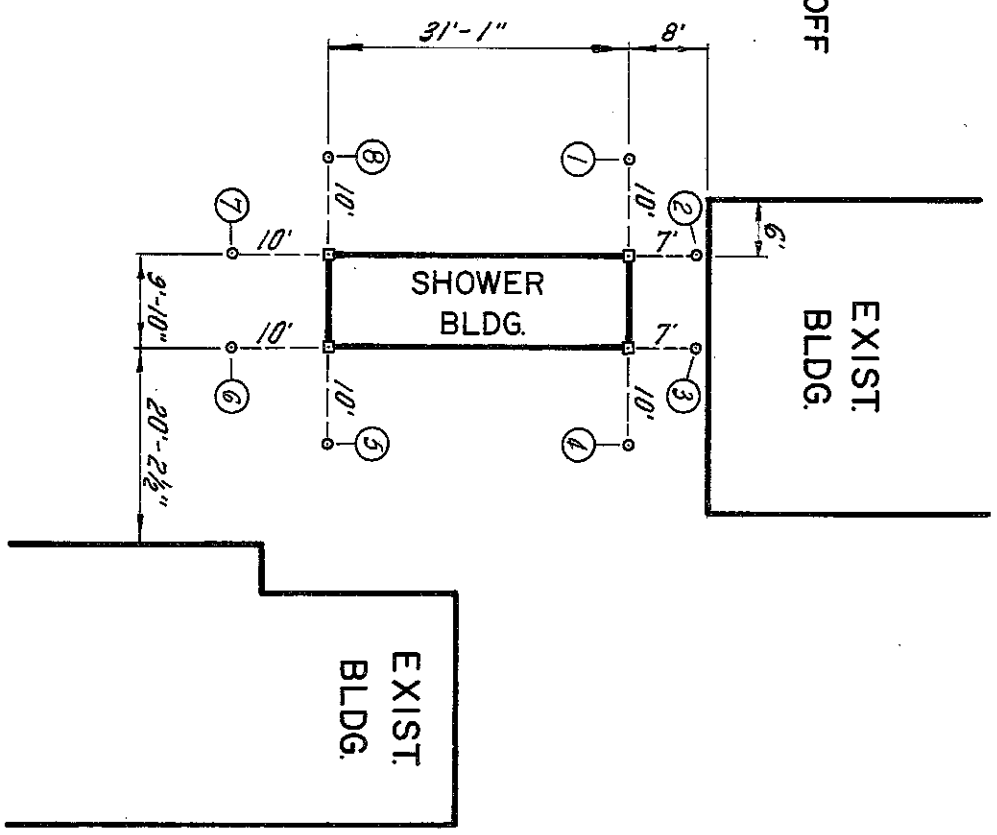
*John A. Mancini*  
JOHN A. MANCINI, R.E. No. 1592  
1279 "A" Street, Hayward, Calif.

**LEGEND**  
Hubs   
Nails & Shiners   
Cross in Concrete Sidewalk 

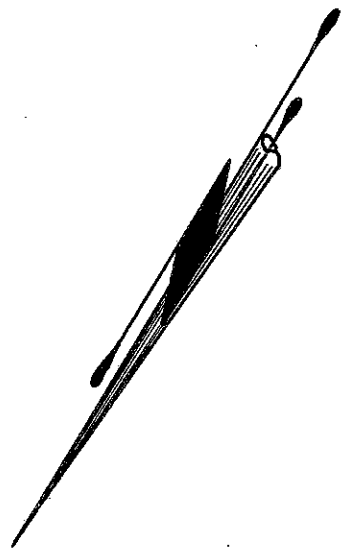
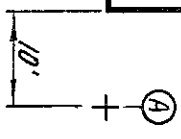
**REFER**  
F.B. 819, p. 22  
File

**REFERENCE POINT ELEVATIONS OFF  
BLDG. CORNERS.**

- A B.M. 4" in sidewalk El. 280.47
- 1 nail & shiner El. 288.12
- 2 nail & shiner El. 288.32
- 3 nail & shiner El. 289.15
- 4 nail & shiner El. 289.89
- 5 nail & shiner El. 290.90
- 6 nail & shiner El. 290.97
- 7 nail & shiner El. 290.64
- 8 nail & shiner El. 290.03



**EXIST.  
ADM. AND  
LIBRARY**



G.L.K.

SURVEY NO. 7327