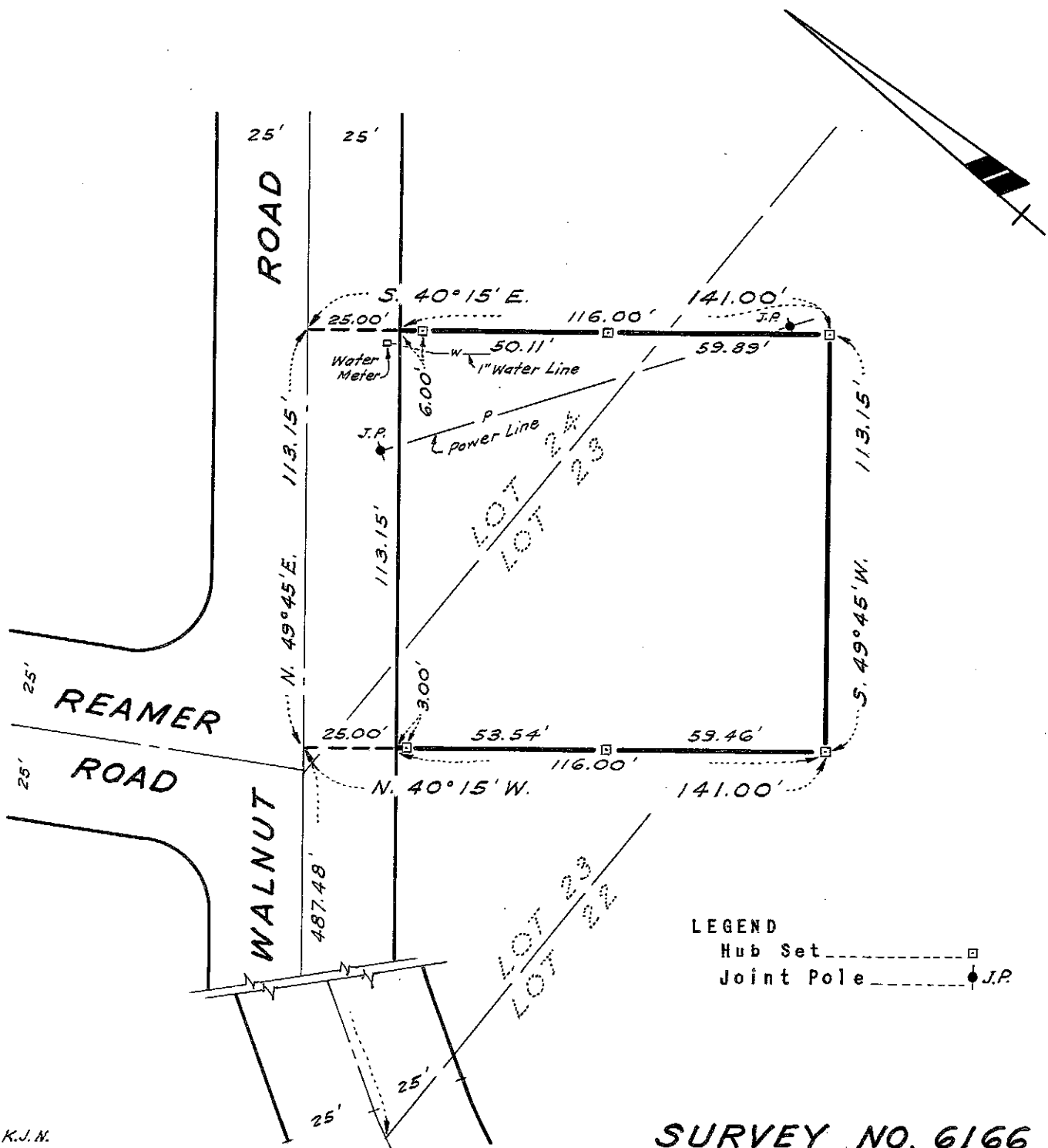


BOUNDARY SURVEY FOR CAPTAIN FREDERICK R. NOYES
 IN EDEN TOWNSHIP, ALAMEDA COUNTY, CALIFORNIA
 OF A PORTION OF LOTS 23 AND 24, AS SAID LOTS ARE
 SHOWN ON THE MAP OF "CASTRO VALLEY ORCHARDS", ETC.
 FILED AUGUST 26, 1910 IN BOOK 25 OF MAPS, AT PAGE
 72, IN THE OFFICE OF THE COUNTY RECORDER OF ALAMEDA
 COUNTY.

REFER:
 F.B. 91, p.74
 Map 10-9
 Survey No. 2640

Surveyed: October 2, 1962
 Scale: 1 Inch = 40 Feet

John A. Mancini
 JOHN A. MANCINI, R.E. No. 1592
 1279 "A" Street, Hayward, Calif.



LEGEND
 Hub Set \square
 Joint Pole \bullet J.P.

SURVEY NO. 6166