
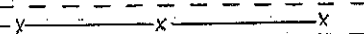



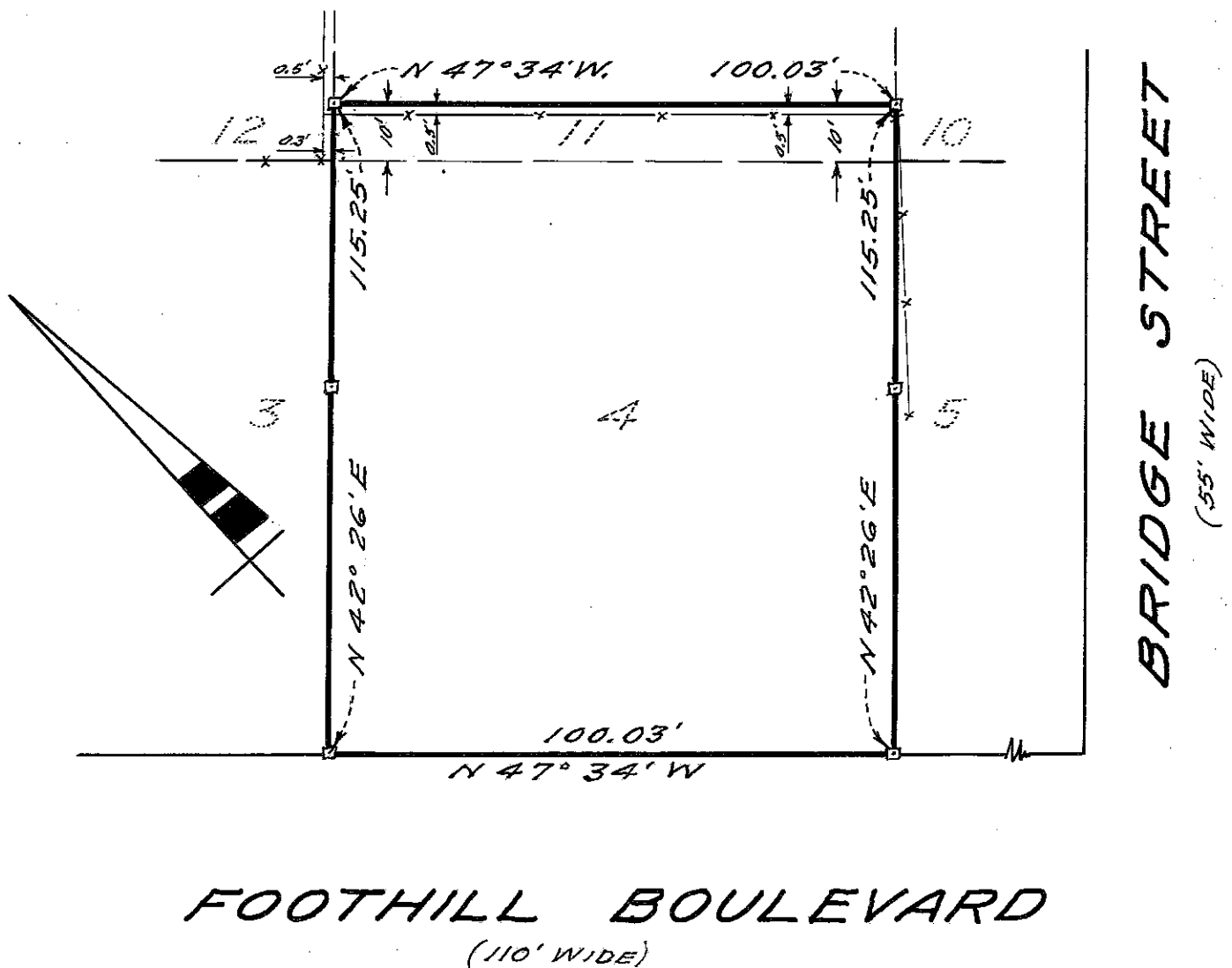
SURVEY FOR FRATERNAL ORDER OF EAGLES, EDEN AERIE NO. 1139
 IN EDEN TOWNSHIP, ALAMEDA COUNTY, CALIFORNIA
 OF A PORTION OF LOT 4 and A PORTION OF LOT 11, IN BLOCK 15,
 AS SAID LOTS AND BLOCK ARE SHOWN ON THE "MAP OF THE LAND
 OF HAYWARDS PARK HOMESTEAD UNION, "ETC. , FILED OCTOBER 24,
 1871 IN BOOK 7, of MAPS, AT PAGE 30, IN THE OFFICE OF THE
 COUNTY RECORDER OF ALAMEDA COUNTY.
 Scale: 1 Inch. = 30 feet
 Surveyed: July 21, 1958

REFER:
 F.B. 61, p. 75
 55

John A. Mancini
 JOHN A. MANCINI, R. E. No. 1592
 1279 "A" Street Hayward, Calif.

LEGEND:

SURVEYED LINES 
 FENCES 
 Hubs 



FOOTHILL BOULEVARD
 (110' WIDE)

BRIDGE STREET
 (55' WIDE)