


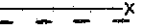


SURVEY FOR MR. DALE V. WALFRON  
 IN THE CITY OF HAYWARD, ALAMEDA COUNTY, CALIFORNIA  
 OF A PORTION OF LOT 13 IN BLOCK D, AS SAID LOT AND BLOCK  
 ARE SHOWN ON THAT CERTAIN MAP ENTITLED, "MAP OF THE  
 ANSPACHER TRACT", ETC., FILED JULY 20, 1892 IN BOOK 17 OF  
 MAPS, AT PAGE 63, IN THE OFFICE OF THE COUNTY RECORDER OF  
 ALAMEDA COUNTY.

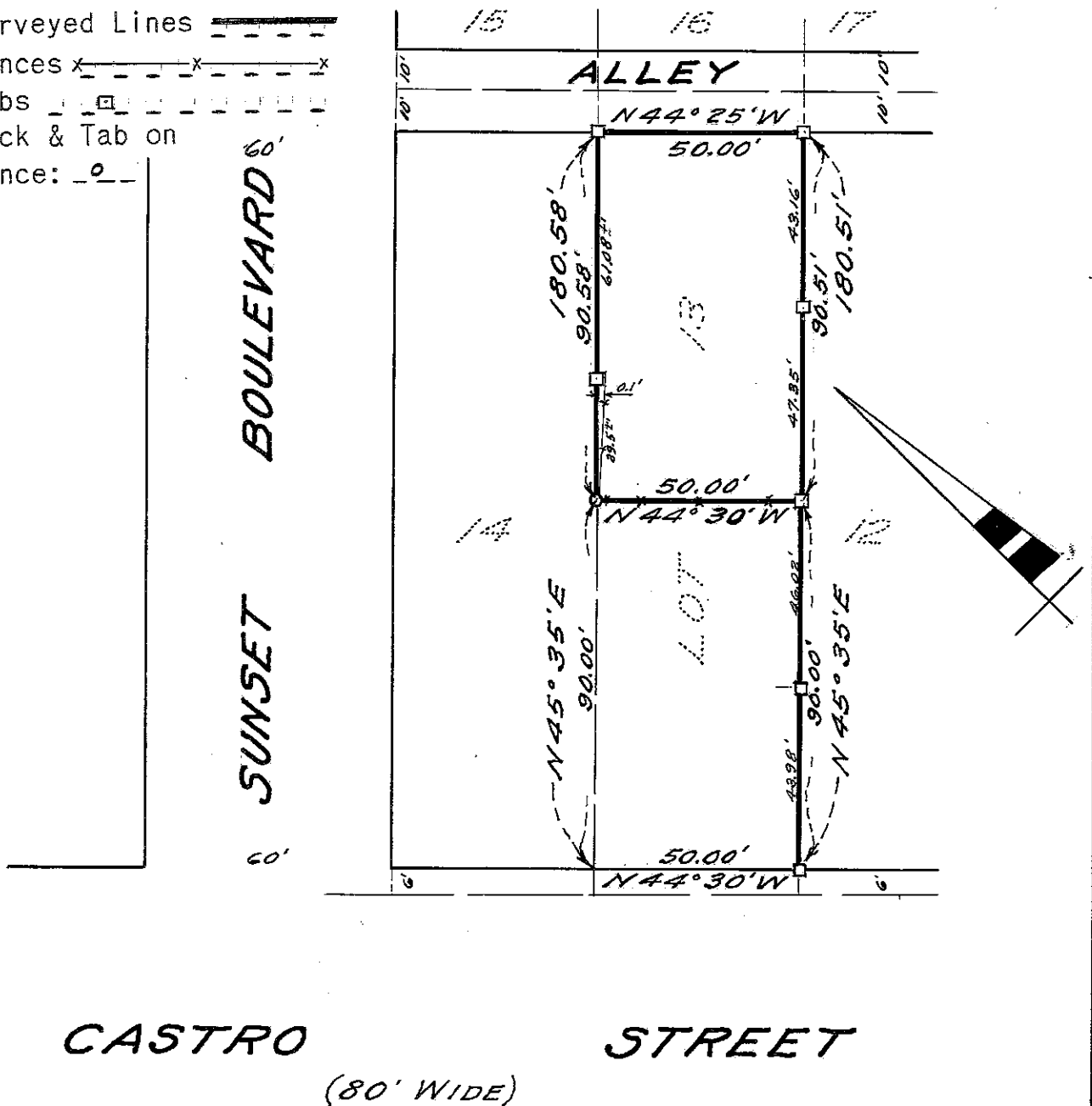
REFER:  
 F.B. 23, p.77,  
 70, 75  
 Map 10-13

Scale: 1 Inch = 40 Feet  
 Surveyed: May 16, 1957

*John A. Mancini*  
 JOHN A. MANCINI, R. E. No. 1592  
 1279 "A" Street, Hayward, California

LEGEND:

- Surveyed Lines 
- Fences 
- Hubs 
- Tack & Tab on Fence: 



SURVEY NO. 4629