

PRELIMINARY SURVEY FOR GENERAL PETROLEUM CORPORATION
 IN THE CITY OF FREMONT, ALAMEDA COUNTY, CALIFORNIA

Scale: 1 Inch = 30 Feet



Surveyed: September 24, 1956

REFER:

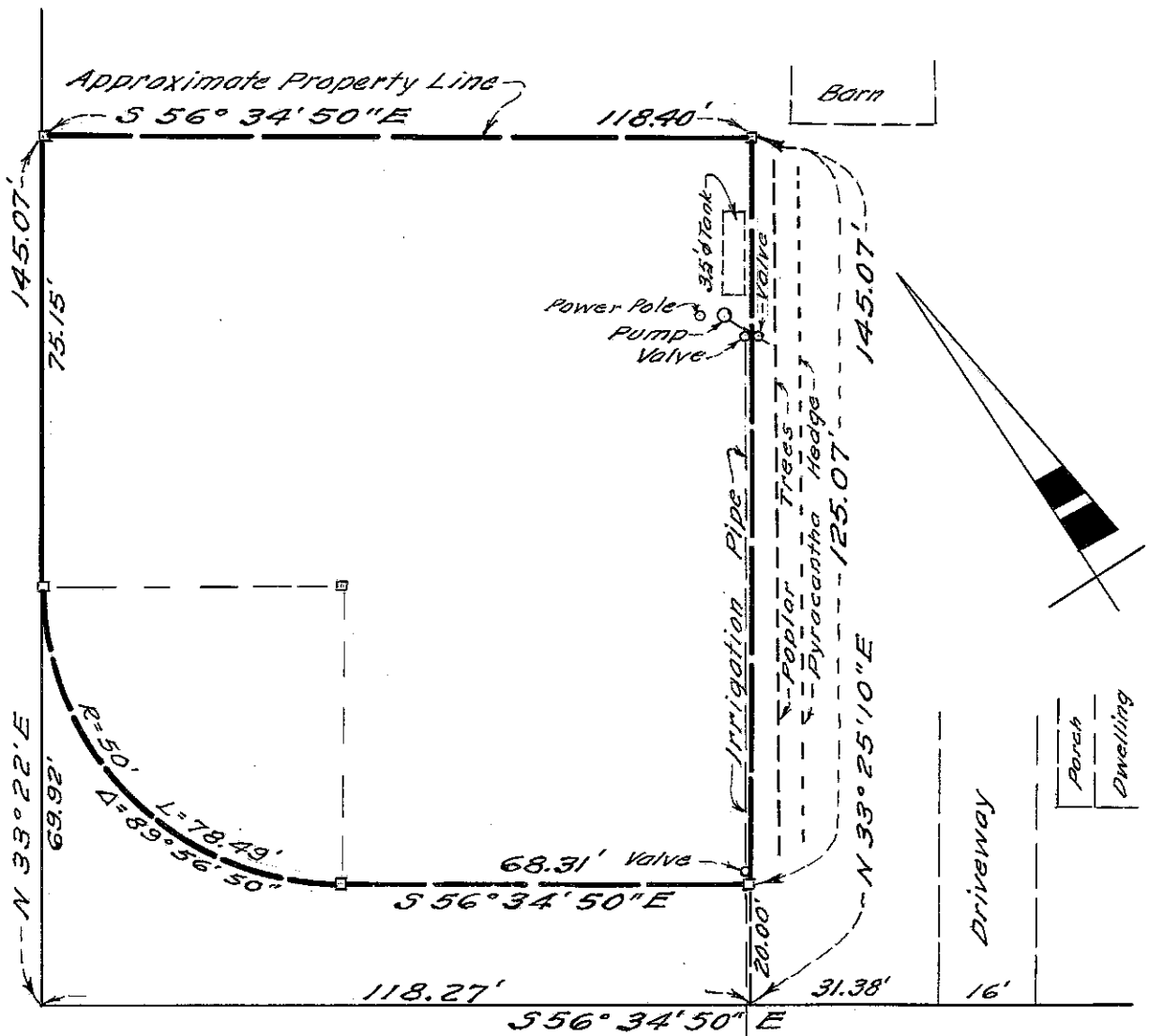
F.B. 64, p. 5
 Map Tract 1333

John A. Mancini
 JOHN A. MANCINI, R. E. No. 1592
 1279 "A" Street, Hayward, California

LEGEND:

Surveyed Lines 
 Stakes 

CENTRAL AVENUE
 (COUNTY ROAD NO. 1948)
 (60' WIDE)



BLACOW ROAD
 (COUNTY ROAD NO. 2724)
 (40' WIDE)