

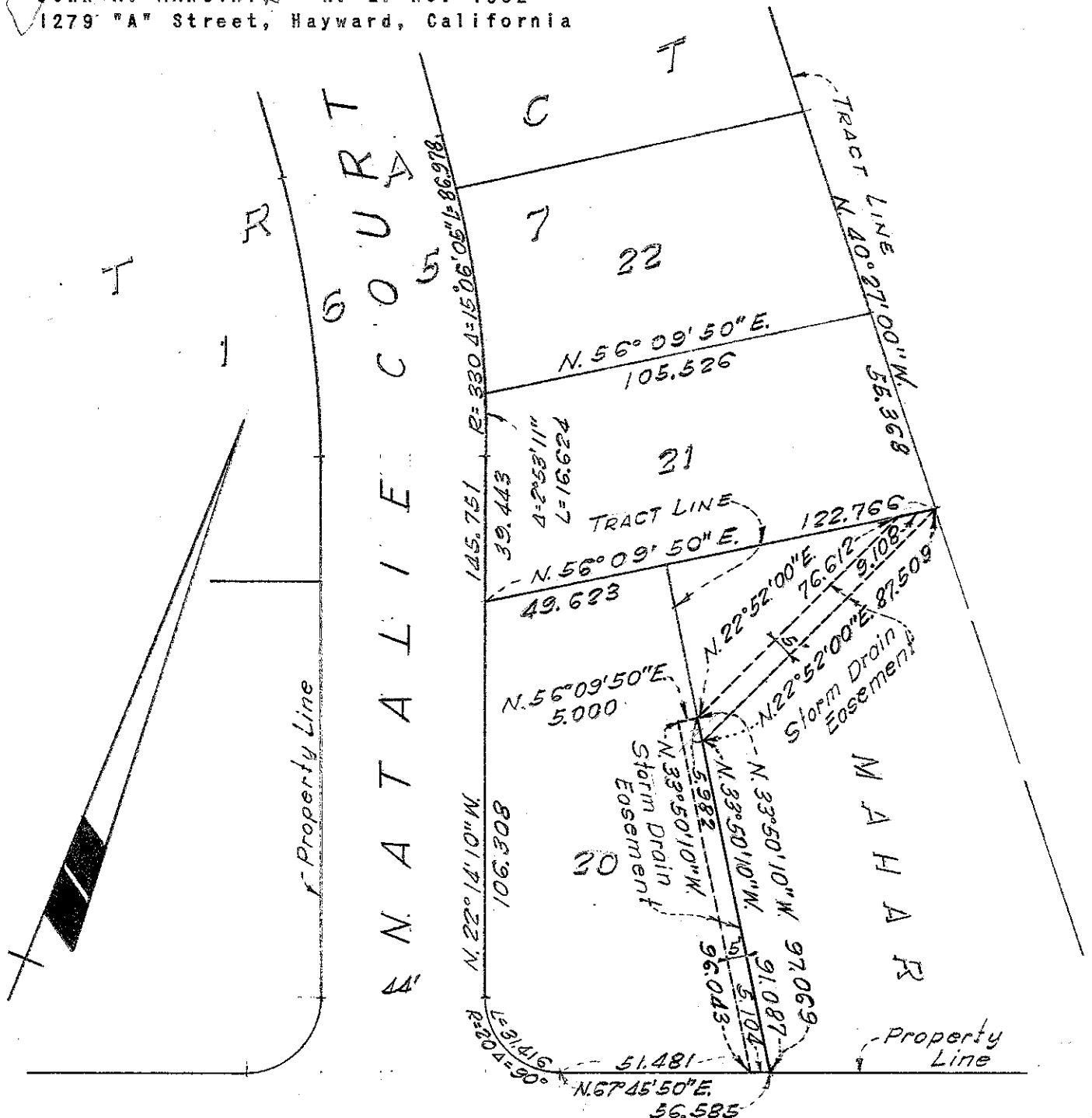
PLAT FOR PERMA-BILT HOMES, INC.
 IN EDEN TOWNSHIP, ALAMEDA COUNTY, CALIFORNIA
 SHOWING EASEMENTS TO BE ACQUIRED IN CONNECTION
 WITH THE DEVELOPMENT OF TRACT 1657.

REFER:
 Survey No 4050

Scale: 1 Inch = 40 Feet

Date: September, 1956

John A. Mancini
 JOHN A. MANCINI, R. E. No. 1592
 1279 "A" Street, Hayward, California



50' KEITH AVENUE 50'
 COUNTY ROAD NO. 7771

Property Line

SURVEY No. 4432