

SURVEY FOR MR. ERNEST A. BECK
IN EDEN TOWNSHIP, ALAMEDA COUNTY, CALIFORNIA

OF A PORTION OF BLOCK "E" AS SAID BLOCK IS SHOWN ON THE MAP ENTITLED "MAP OF MEEK ESTATE ORCHARDS, HAYWARD, EDEN TOWNSHIP, ALAMEDA CO., CALIFORNIA, MAP NO. 1 A SUBDIVISION OF BLOCKS NUMBERED 1 TO 8 INCLUSIVE", FILED DECEMBER 15, 1911 IN BOOK 26 OF MAPS, AT PAGE 60, IN THE OFFICE OF THE COUNTY RECORDER OF ALAMEDA COUNTY.

Scale: 1 Inch = 50 Feet
 Surveyed: March 16, 1956

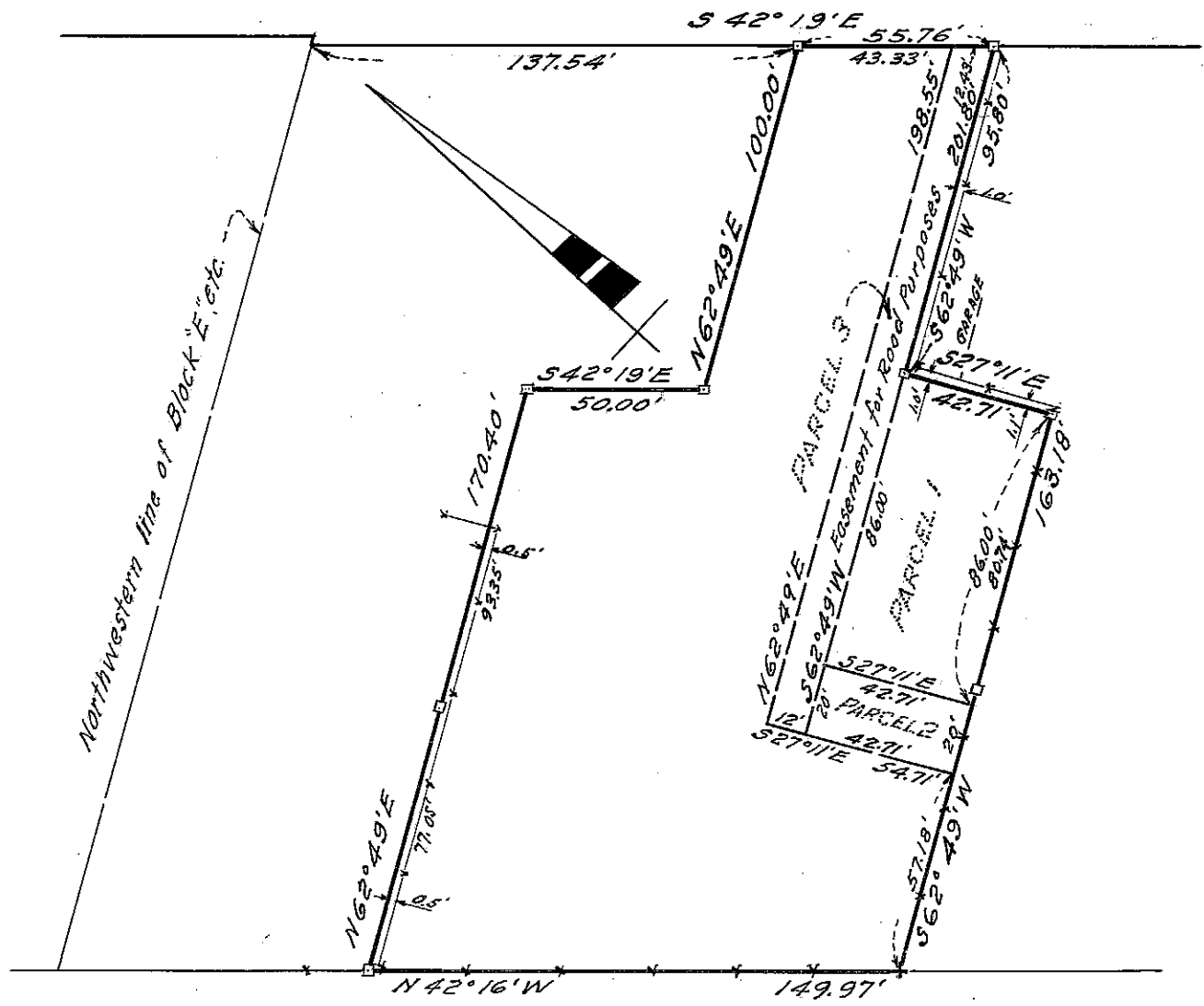
REFER:
 F.B. 60, p. 51
 F.B. 16, p. 66
 Survey 1249
 Map 32-3-7, 7A
 " 4-2
 " 4-9

LEGEND:

- Surveyed Lines - - - - -
- Stakes - - - - - □
- Cross in Concrete - - - - - +
- Fences - - - - - x

John A. Mancini
 JOHN A. MANCINI, R. E. No. 1592
 1279 "A" Street, Hayward, California

60' MEEKLAND AVENUE 60'



SOUTHERN PACIFIC RAILROAD COMPANY
 100' WIDE