

SURVEY FOR MRS. ELVIRA OWENS

IN THE CITY OF HAYWARD, ALAMEDA COUNTY, CALIFORNIA
OF LOT 15, IN BLOCK 46, "MAP OF THE PETERSEN TRACT,
HAYWARDS, CAL.", ETC., FILED SEPTEMBER 30, 1891 IN
BOOK 13 OF MAPS, AT PAGE 14, IN THE OFFICE OF THE
COUNTY RECORDER OF ALAMEDA COUNTY.

REFER:

F.B. 63, p. 2
No. 2572
No. 2593
No. 3145
No. 2905

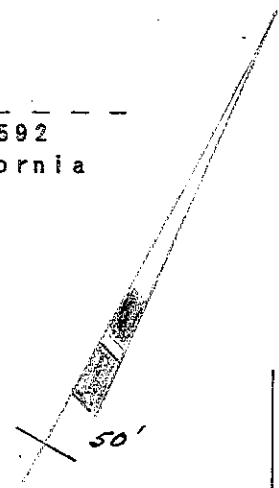
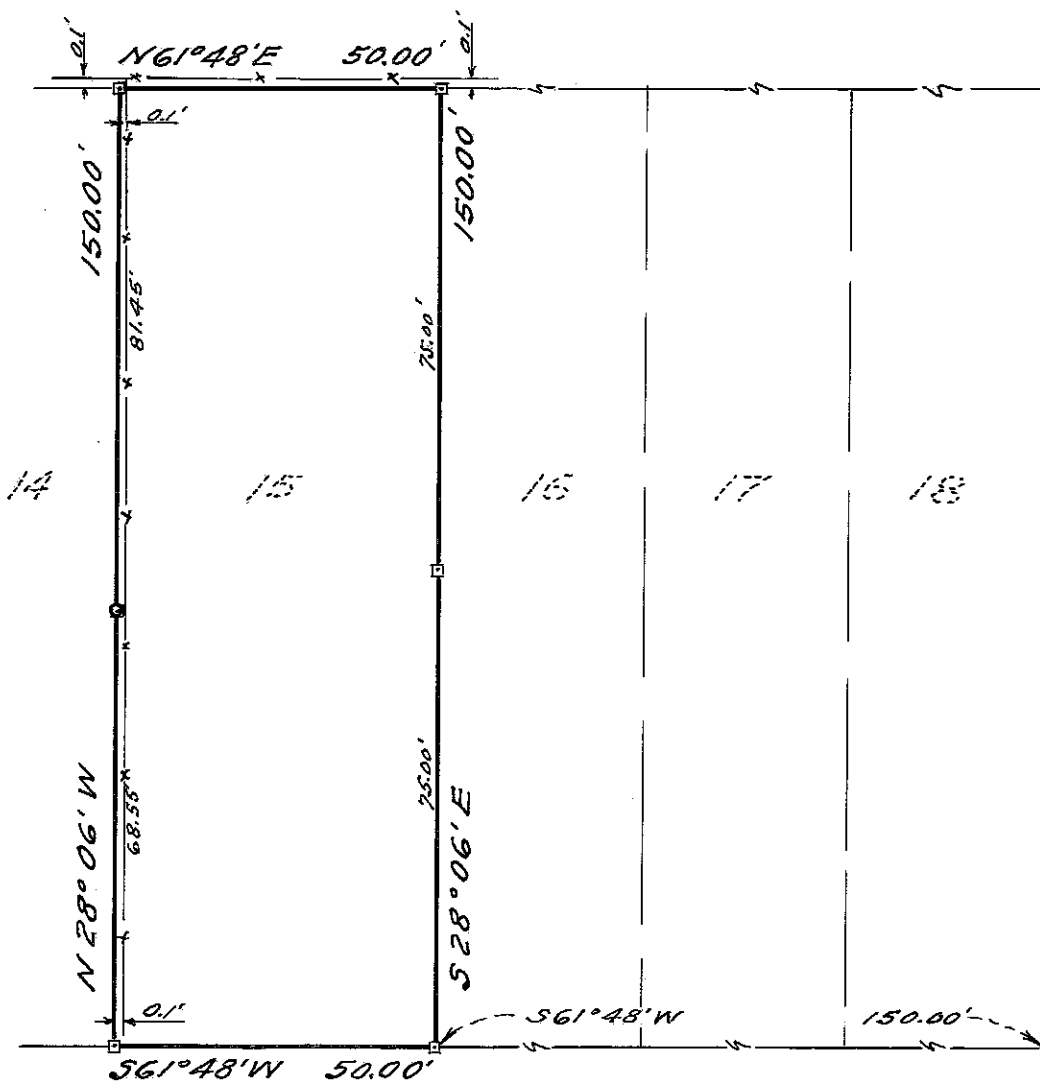
Scale: 1 Inch = 30 Feet

Surveyed: July 8, 1955

John A. Mancini
JOHN A. MANCINI, R. E. No. 1592
1279 "A" St., Hayward, California

LEGEND:

- Surveyed Line
- Hubs
- Nail and Shiner
- Fences



SIXTH STREET

SIXTH STREET

"C"

STREET