

PLAT FOR MR. STANLEY M. DAVIS

REFER:

IN THE CITY OF HAYWARD, ALAMEDA COUNTY, CALIFORNIA,

Map T 1416

SHOWING A PORTION OF BLOCK 6, "TRACT 1416 CITY OF HAYWARD

ALAMEDA COUNTY CALIFORNIA", ETC., FILED AUGUST 18, 1954

IN BOOK 34 OF MAPS, AT PAGES 89 TO 92 INCLUSIVE, IN THE

OFFICE OF THE COUNTY RECORDER OF ALAMEDA COUNTY.

Scale: 1 Inch = 50 Feet

Date: April, 1955

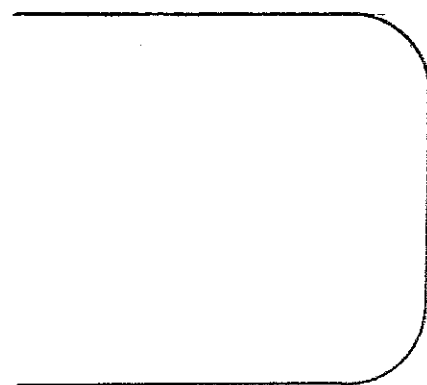
John A. Mancini
JOHN A. MANCINI, R. E. NO. 1592

1279 "A" St., Hayward, California

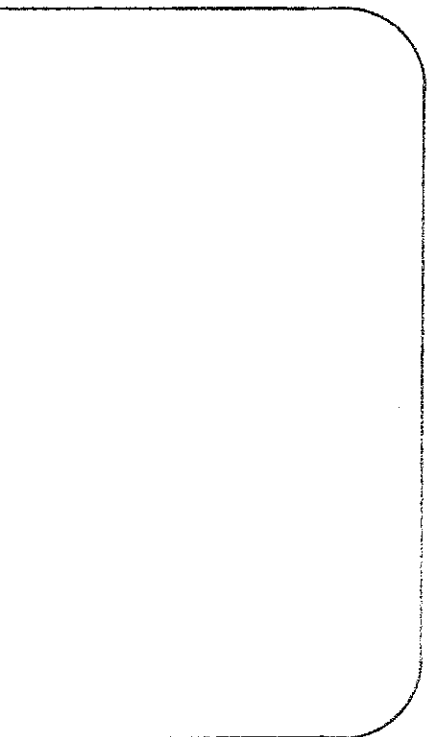
(93.20' WIDE)

ROAD

HARDER



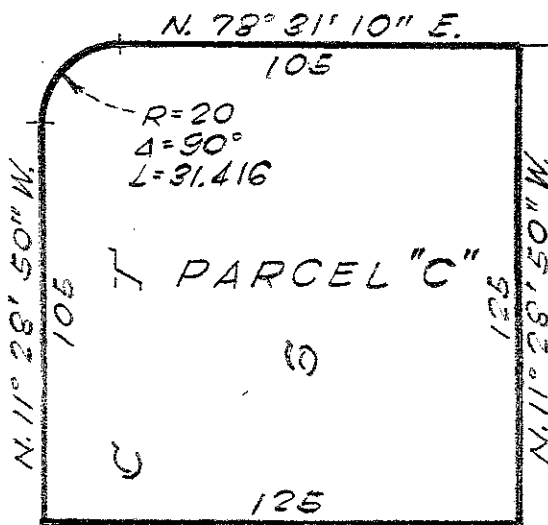
ELDRIDGE AVENUE



CASCADE STREET

EVERGREEN STREET

EVERGREEN STREET



N. 78° 31' 10" E.

1

A

R

T

6

K

C

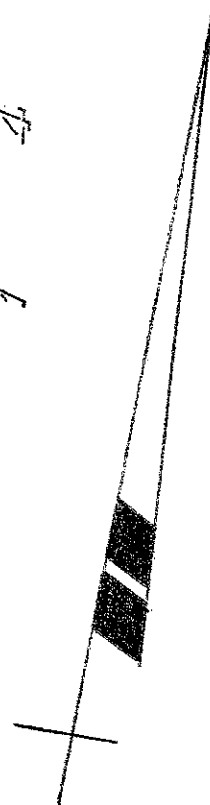
O

L

B

7

5



Sheet 2 of 2 Sheets
SURVEY No. 4005

HWD