

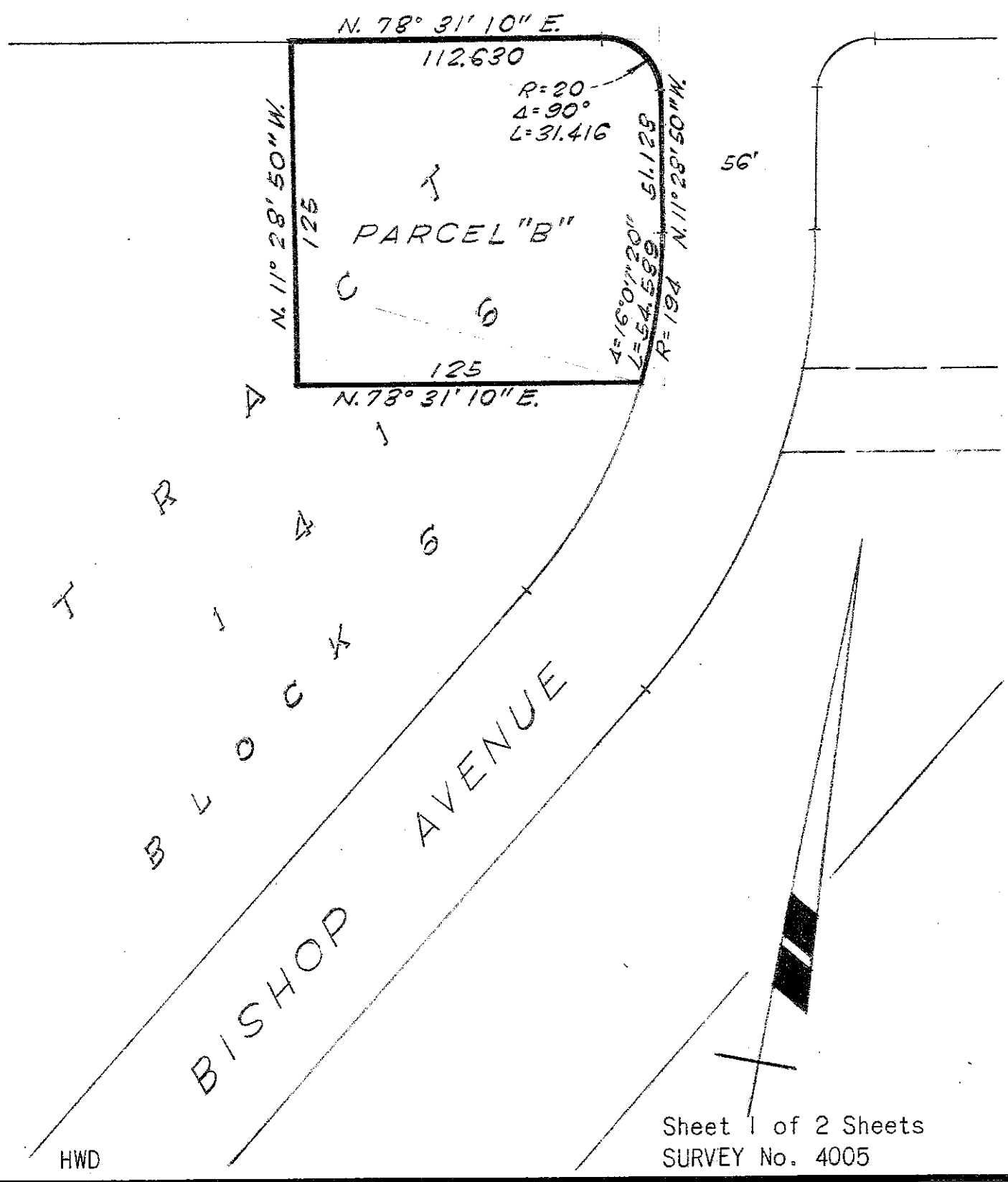
PLAT FOR MR. STANLEY M. DAVIS  
 IN THE CITY OF HAYWARD, ALAMEDA COUNTY, CALIFORNIA  
 SHOWING A PORTION OF BLOCK 6, "TRACT 1416 CITY OF HAYWARD  
 ALAMEDA COUNTY CALIFORNIA", ETC., FILED AUGUST 18, 1954  
 IN BOOK 34 OF MAPS, AT PAGES 89 TO 92 INCLUSIVE, IN THE  
 OFFICE OF THE COUNTY RECORDER OF ALAMEDA COUNTY.

REFER:  
 Map T 1416

Scale: 1 Inch = 50 Feet  
 Date: April, 1955

*John A. Mancini*  
 JOHN A. MANCINI, R. E. NO. 1592  
 1279 "A" St., Hayward, California  
 (93.20' WIDE) ROAD

HARDER



Sheet 1 of 2 Sheets  
 SURVEY No. 4005

HWD