

SURVEY FOR MACDONALD PRODUCTS CO.
 IN EDEN TOWNSHIP, ALAMEDA COUNTY, CALIFORNIA.

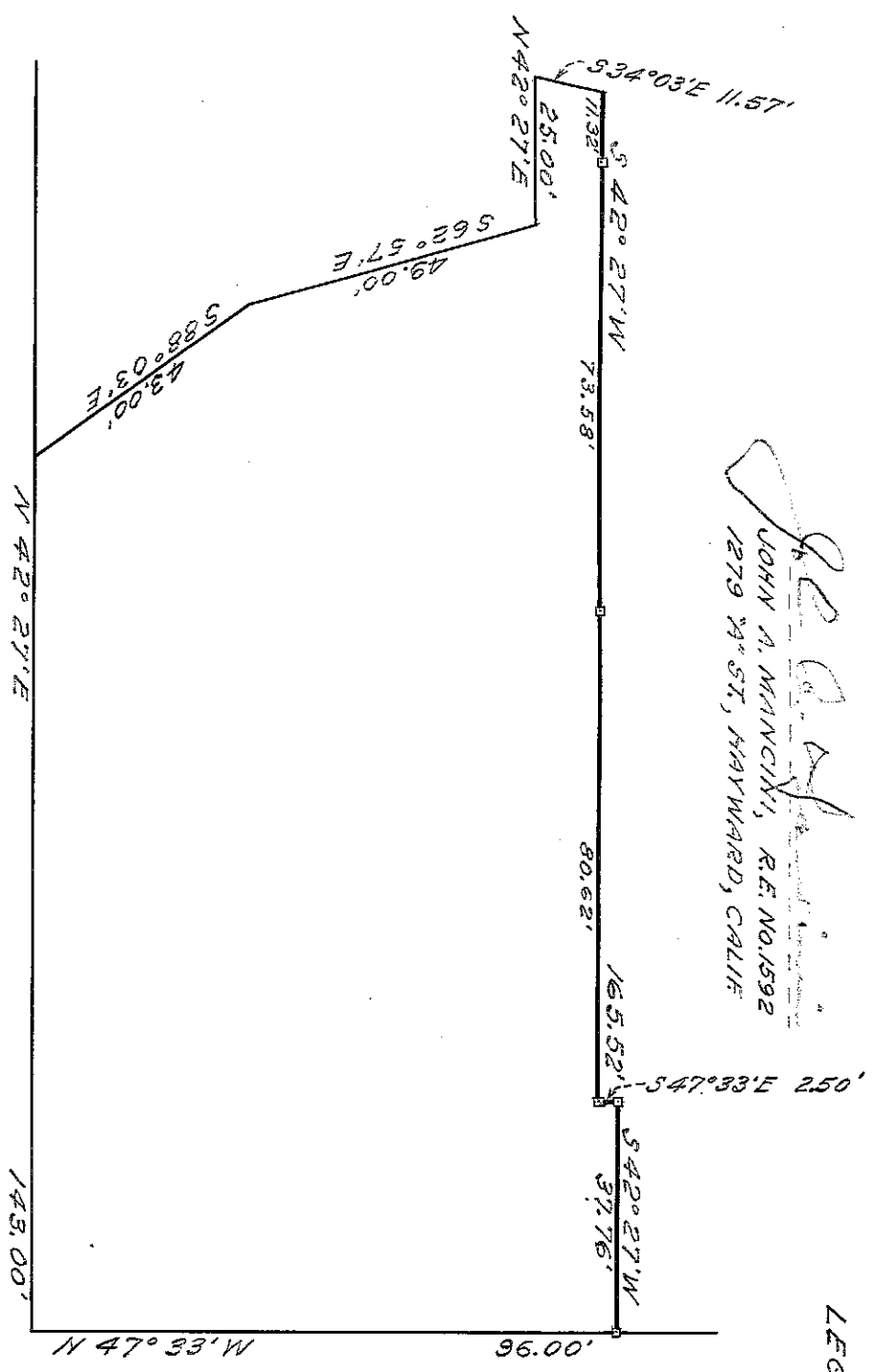
SCALE: 1 INCH = 30 FEET
 SURVEYED: FEBRUARY 14, 1955

John A. Mancini
 JOHN A. MANCINI, R.E. NO. 1592
 1279 24th ST., HAYWARD, CALIF.

REFER:
 F.B. 62, P. 1.
 F.B. 108, P. 6
 F.B. 45, P. 46
 F.B. 54, P. 42

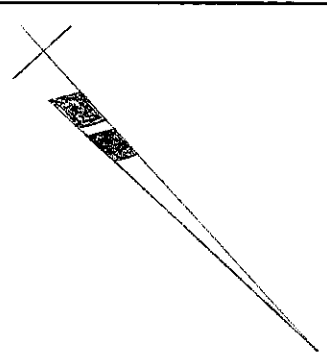
LEGEND:

Surveyed line 
 Hubs 



RIO VISTA STREET 40'

HAZEL AVENUE (COUNTY ROAD NO. 5920)



SURVEY NO. 3943