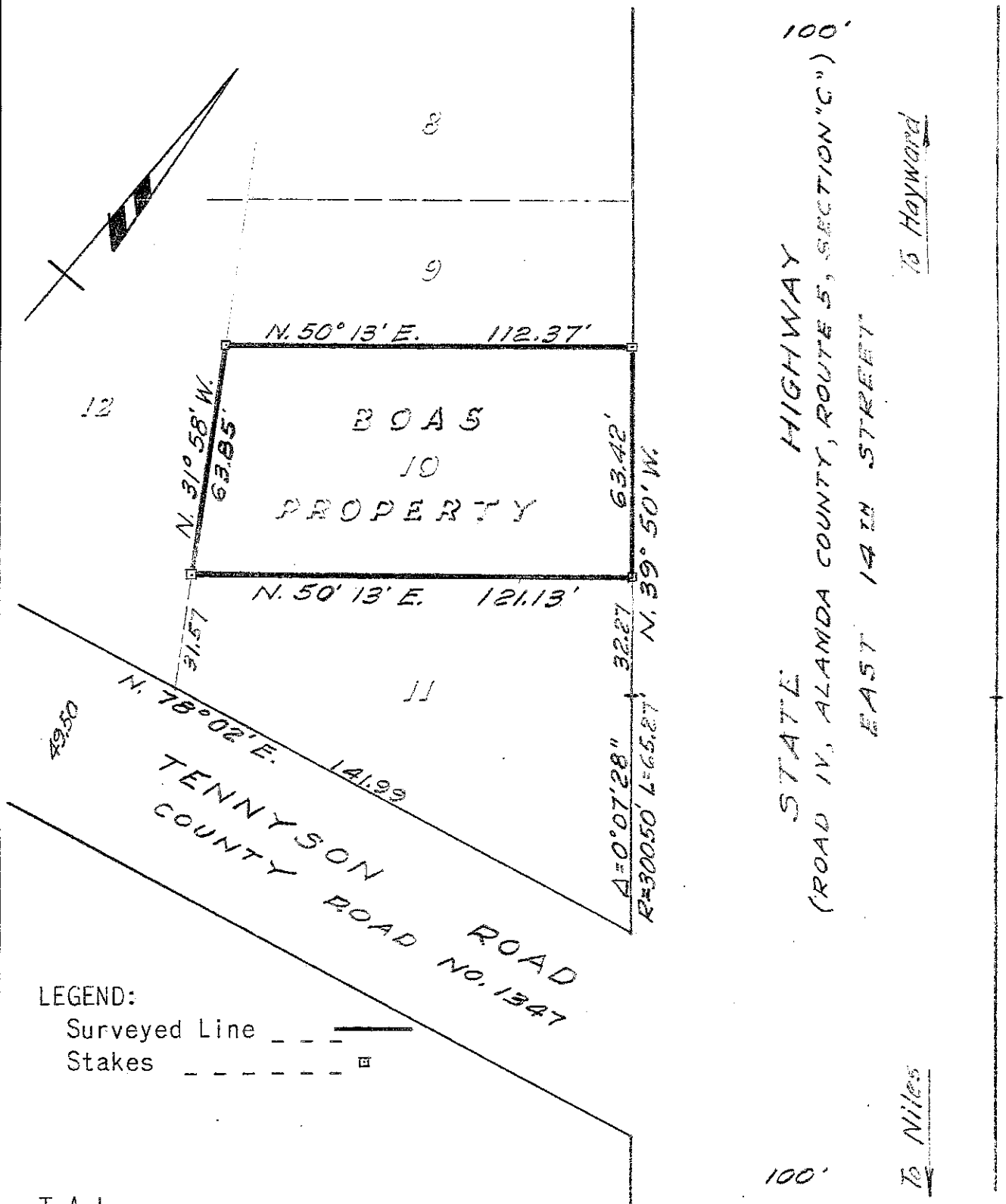


SURVEY FOR COZY HOME BUILDERS
 IN EDEN TOWNSHIP, ALAMEDA COUNTY, CALIFORNIA
 OF A PORTION OF LOT 10, BLOCK B, "RAMOS
 ADDITION TO THE CITY OF ALTA VISTA", FILED
 DECEMBER 9, 1925 IN BOOK 5 OF MAPS, AT PAGE
 40, IN THE OFFICE OF THE COUNTY RECORDER
 OF ALAMEDA COUNTY.

REFER:
 F.B. 57, p. 26
 Survey No. 1952A
 Map T-23

Scale: 1 Inch = 40 Feet
 Surveyed: January 14, 1955

John A. Mancini
 JOHN A. MANCINI, R. E. No. 1592
 1279 "A" St., Hayward, California



LEGEND:
 Surveyed Line ————
 Stakes ————

T.A.L.

SURVEY No. 3915