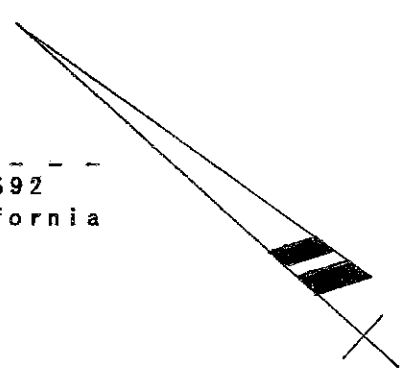


SURVEY FOR DOWNTOWN MERCHANTS  
 PARKING ASSOCIATION  
 IN CITY OF HAYWARD, ALAMEDA COUNTY CALIFORNIA.

Refer: FB.58, Pg. 8  
 File 23

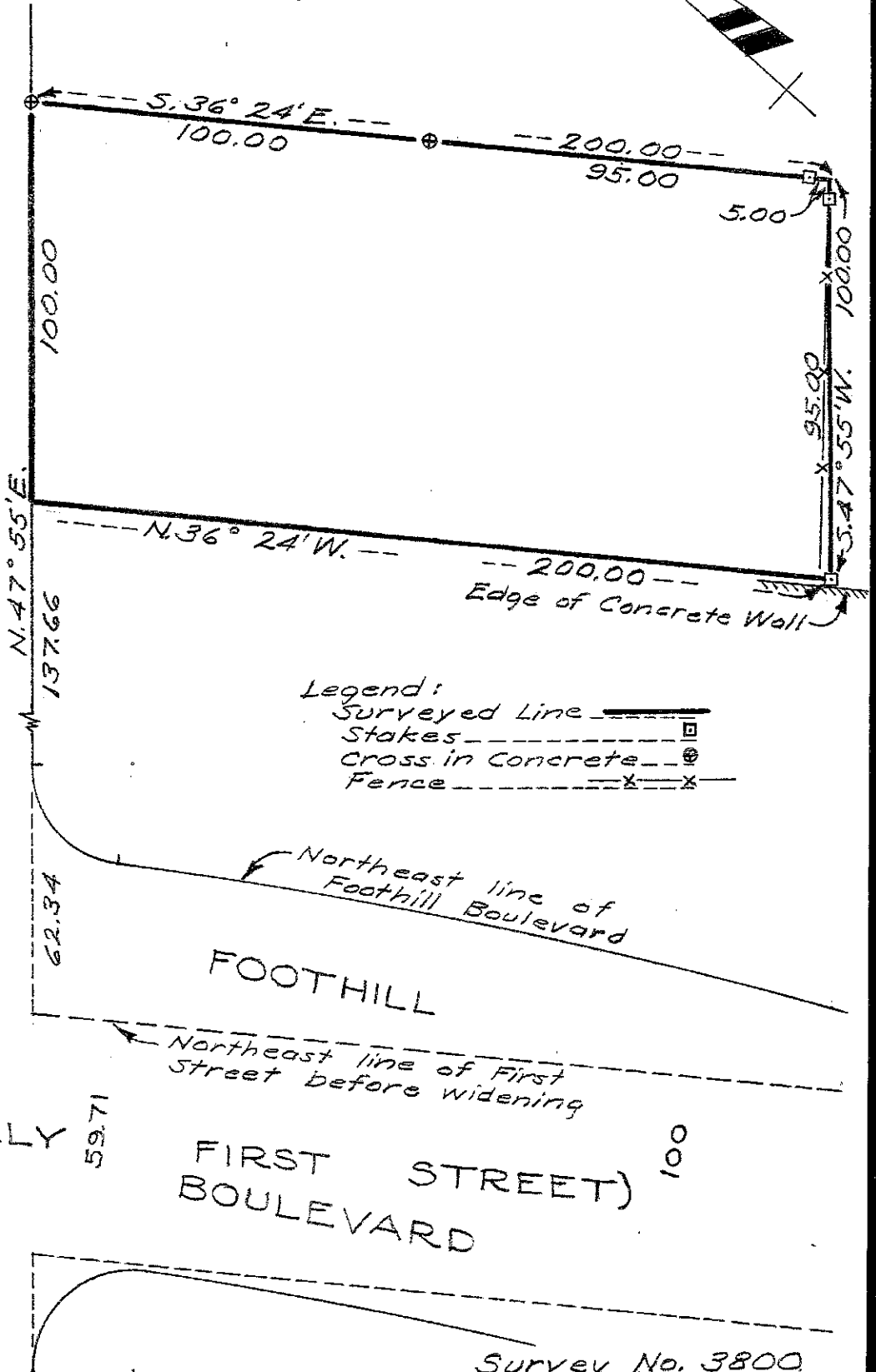
Scale: 1 Inch = 40 Feet  
 Surveyed: July 27, 1954

*John A. Mancini*  
 JOHN A. MANCINI, R.E. No. 1592  
 1279 "A" St., Hayward, California



79.61

STREET



- Legend:
- Surveyed Line
  - Stakes
  - Cross in Concrete ⊗
  - Fence x x

(FORMERLY

FIRST STREET)  
 BOULEVARD

"B"

79.61

Survey No. 3800