

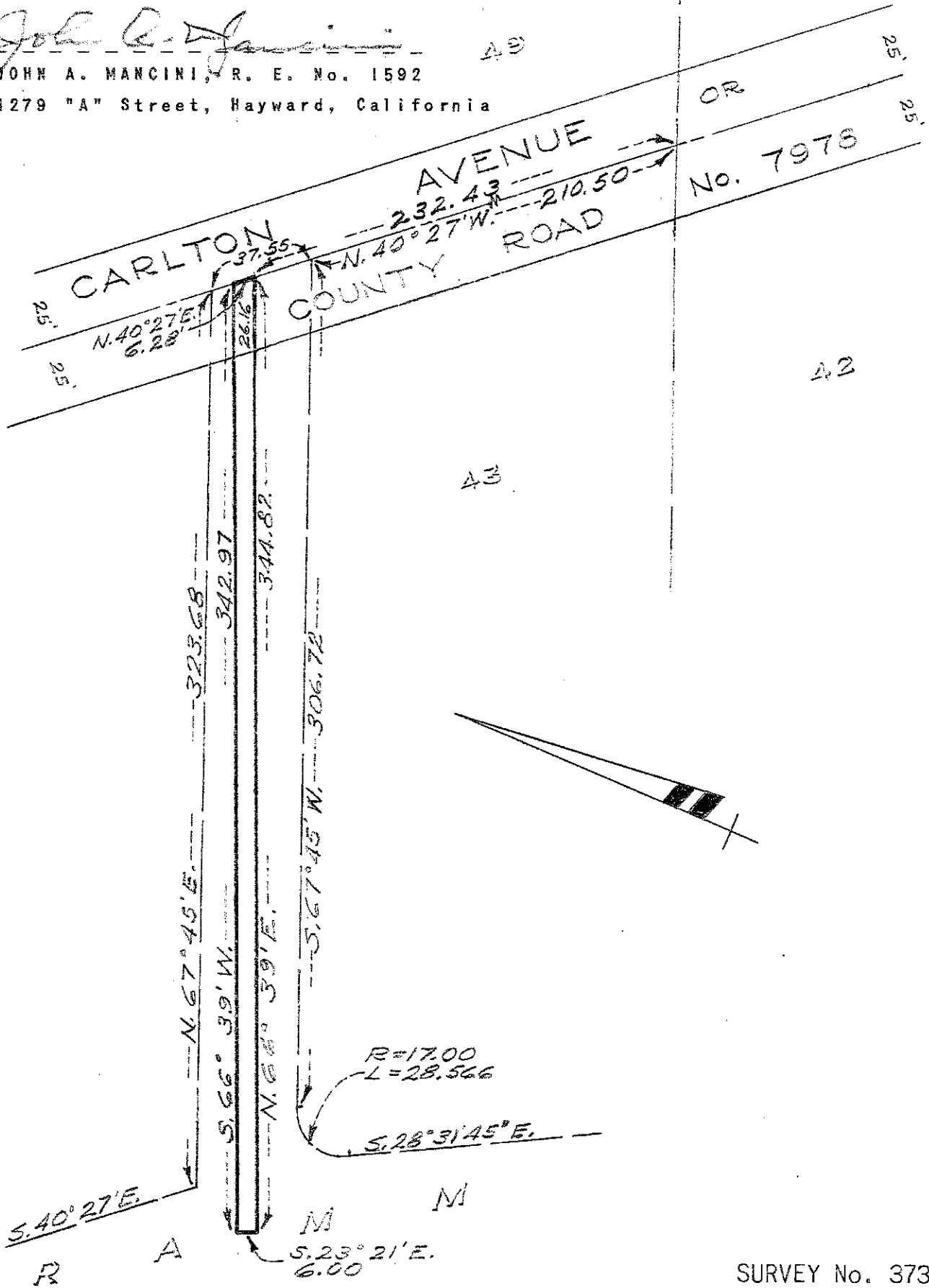
PLAT FOR CASTRO VALLEY SANITARY DISTRICT
 IN EDEN TOWNSHIP, ALAMEDA COUNTY, CALIFORNIA
 OF AN EASEMENT TO BE CONVEYED BY PAUL F. RAMM,
 ET UX., TO THE CASTRO VALLEY SANITARY DISTRICT

REFER:
 Survey No. 3222
 Map T-27

Scale: 1 Inch = 50 Feet
 Surveyed: December 6, 1954

50

John A. Mancini
 JOHN A. MANCINI, R. E. No. 1592
 1279 "A" Street, Hayward, California



R
 D.M.B.

SURVEY No. 3731