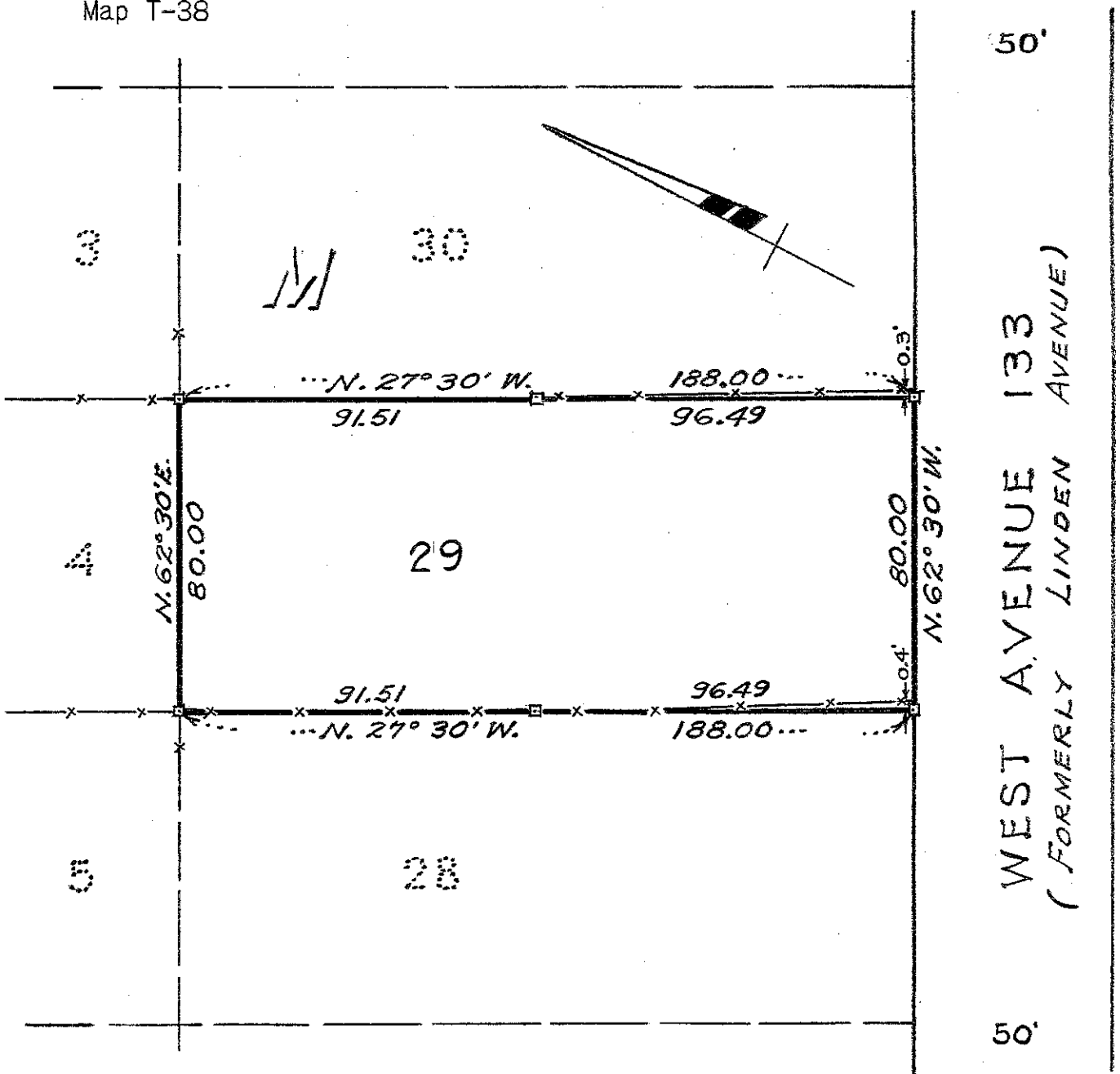


SURVEY FOR DR. PEARL S. HUEY
 IN EDEN TOWNSHIP, ALAMEDA COUNTY, CALIFORNIA
 OF LOT 29 IN BLOCK "M", AS SAID LOT AND BLOCK ARE SHOWN ON THE
 "MAP OF MULFORD GARDENS, UNIT NO. 1", ETC., FILED MAY 2, 1927
 IN BOOK 12 OF MAPS, AT PAGE 69 IN THE OFFICE OF THE COUNTY
 RECORDER OF ALAMEDA COUNTY.

Scale: 1 Inch = 40 Feet
 Surveyed: January 22, 1954
 REFER:
 F.B. 54, p. 70
 Map T-38

JOHN A. MANCINI, R.E. NO. 1592
 1279 "A" St., Hayward, California



LEGEND:

- Surveyed Line
- Stakes
- Fences