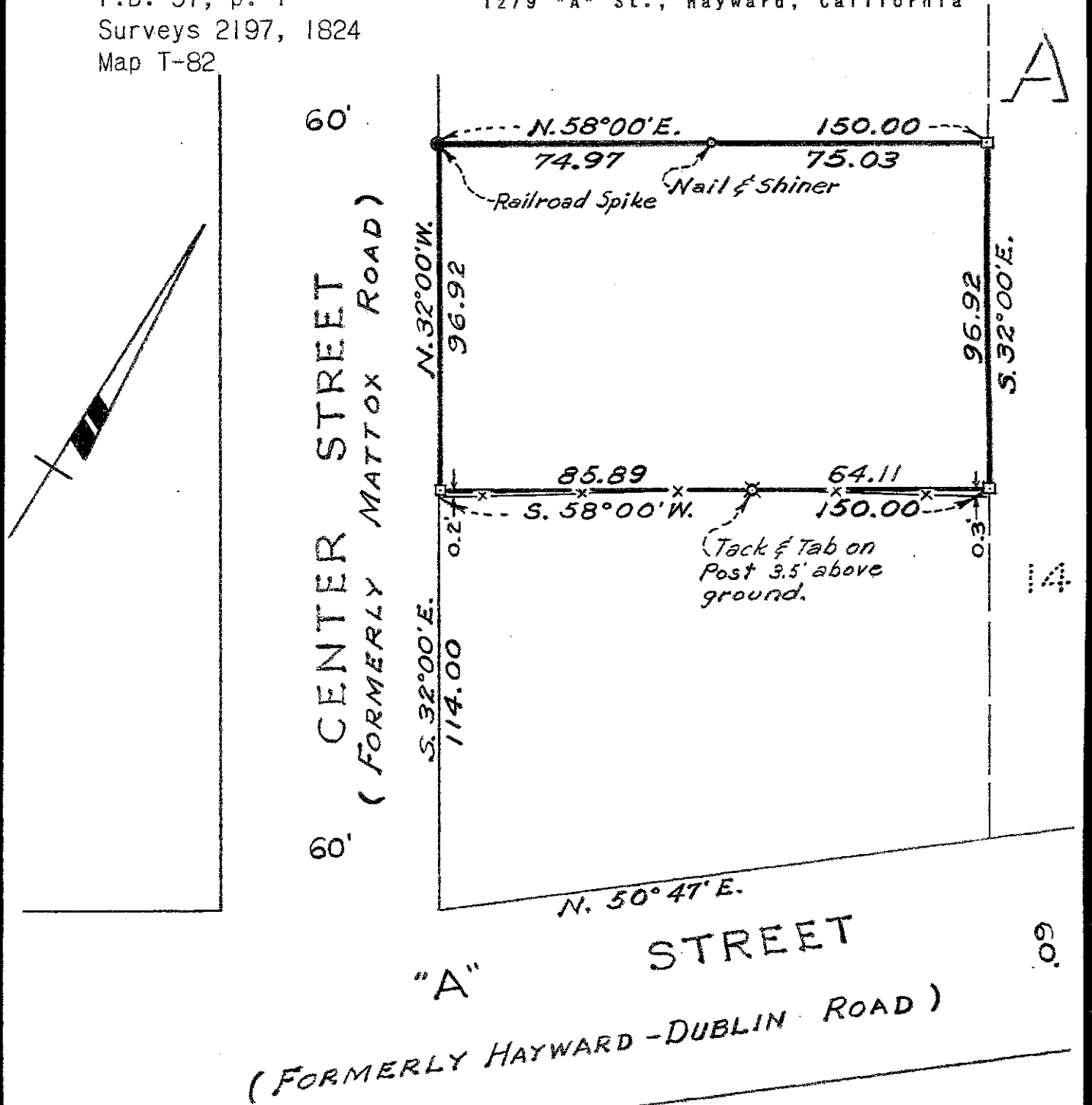


SURVEY FOR MR. HILBURN W. REED
 IN EDEN TOWNSHIP, ALAMEDA COUNTY, CALIFORNIA.

Scale: 1 Inch = 40 Feet
 Surveyed: January 5, 1954

REFER:
 F.B. 57, p. 1
 Surveys 2197, 1824
 Map T-82

John A. Mancini
 JOHN A. MANCINI, R. E. NO. 1592
 1279 "A" St., Hayward, California



LEGEND:

