

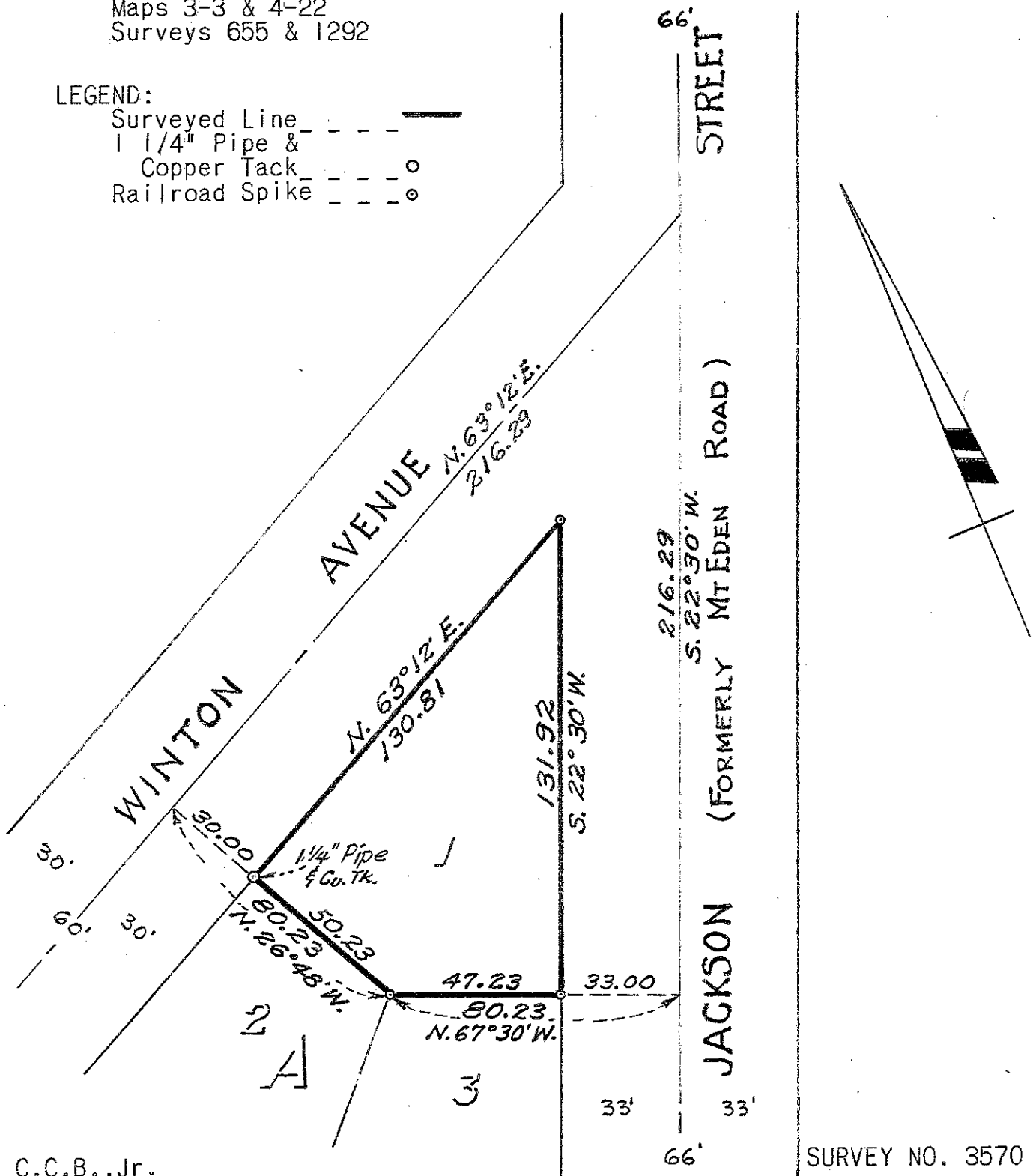
SURVEY FOR MR. TONY GOMES
 IN THE CITY OF HAYWARD, ALAMEDA COUNTY, CALIFORNIA
 OF LOT 1, IN BLOCK "A", AS SHOWN ON THE MAP ENTITLED,
 "ANNEX TO RAMOS BUNGALOW PARK", ETC., FILED
 SEPTEMBER 28, 1920 IN BOOK 6 OF MAPS, AT PAGE 37
 IN THE OFFICE OF THE COUNTY RECORDER OF ALAMEDA
 COUNTY.

Scale: 1 Inch = 40 Feet
 Surveyed: October 19, 1953

John A. Mancini
 JOHN A. MANCINI, R.E. NO. 1592
 1279 "A" St., Hayward, California

REFER:
 F.B. 9, p. 61
 Maps 3-3 & 4-22
 Surveys 655 & 1292

LEGEND:
 Surveyed Line ————
 1 1/4" Pipe & Copper Tack ————○
 Railroad Spike ————○



C.C.B., Jr.

SURVEY NO. 3570