

Survey for JARVIS ELECTRIC COMPANY.
 in Eden Township, Alameda County, California.
 of Lot 23 and a portion of Lots 22, 24, 28 and 29,
 Block "B", "MAP OF POPLAR TRACT", etc.,
 filed April 24, 1911, in Book 26 of Maps, at page
 23, in the office of the County Recorder of
 Alameda County.

SCALE: 1 INCH = 50 FEET

Surveyed, September 28, 1953

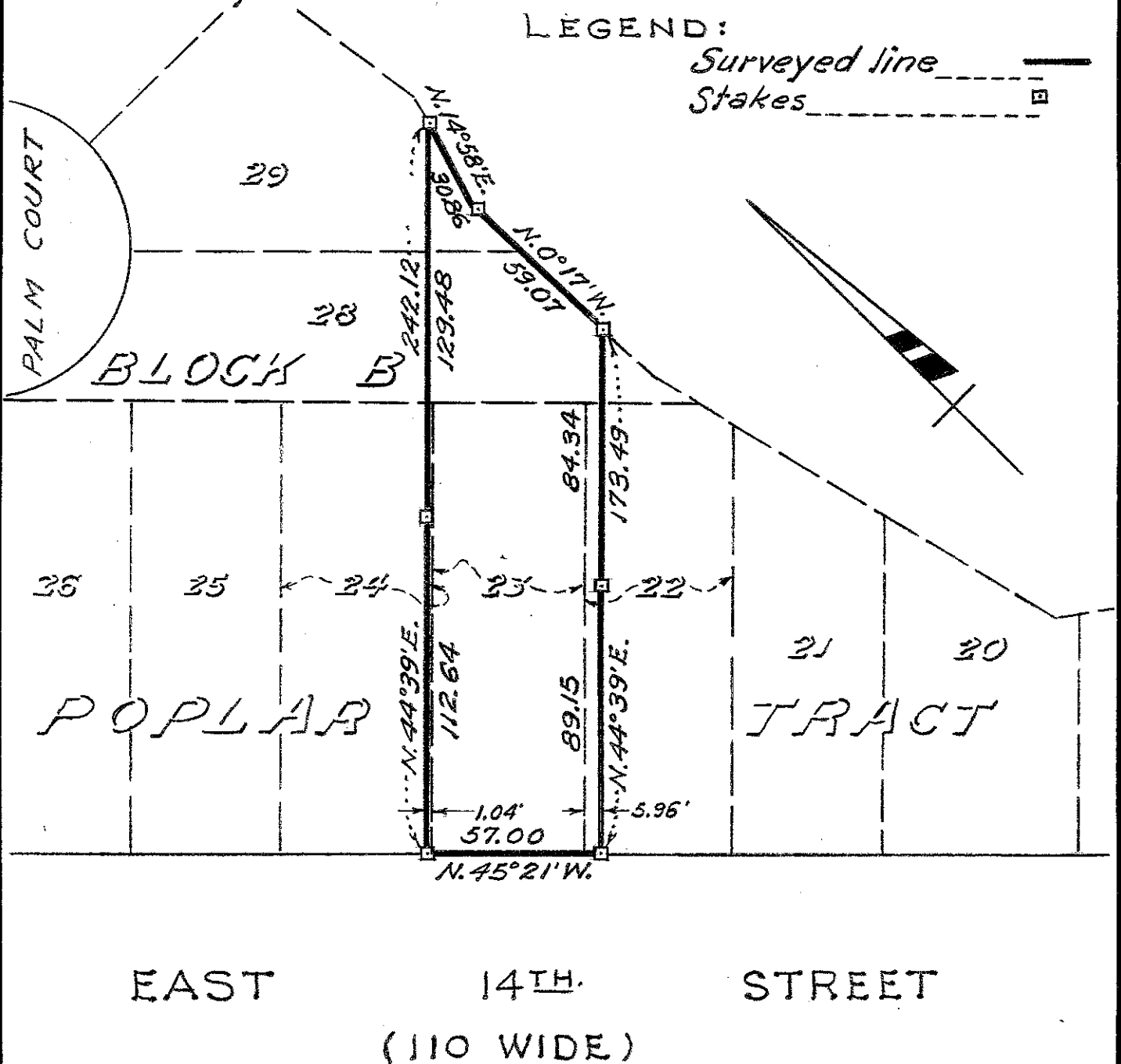
REFER:

F.B. 44, p. 69
 Survey 967
 Map 4-19

John A. Mancini
 John A. Mancini, R.E. No. 1592
 1279 "A" St., Hayward, California.

LEGEND:

Surveyed line ———
 Stakes - - - - -



C.C.B. Jr.

Survey No. 3544