

SURVEY FOR MR. A. PETTITI  
 IN EDEN TOWNSHIP, ALAMEDA COUNTY, CALIFORNIA  
 OF A PORTION OF BLOCK 3, AS SHOWN ON THE "MAP  
 OF SAN LORENZO AS SURVEYED BY J. E. WHITCHER,  
 1863". ETC., FILED JANUARY 16, 1864 IN BOOK 6 OF  
 MAPS, AT PAGE 3, IN THE OFFICE OF THE COUNTY  
 RECORDER OF ALAMEDA COUNTY.

REFER:  
 F.B. 52, p. 55  
 Surveys No.  
 3038  
 2294A  
 839

Scale: 1 Inch = 40 Feet  
 Surveyed: October, 1953

*John A. Mancini*  
 JOHN A. MANCINI, R.E. NO. 1592  
 1279 "A" St., Hayward, California

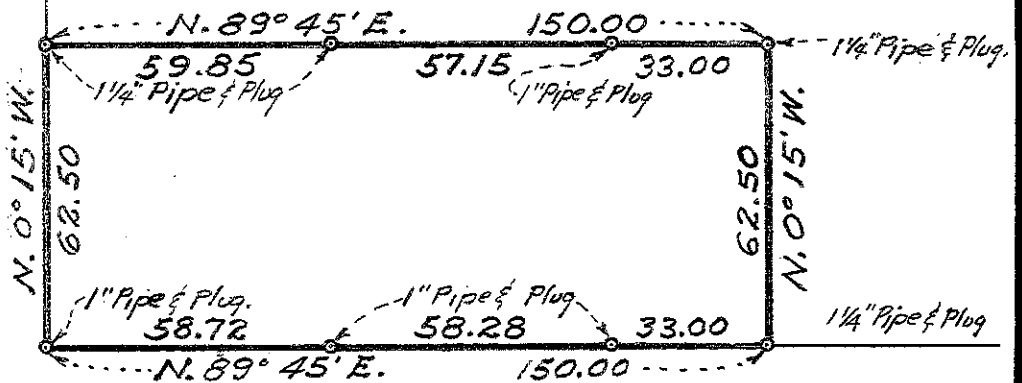
66'

BOULEVARD

(FORMERLY TELEGRAPH ROAD)

66' HESPERIAN

BLOCK 3



66'

WALNUT STREET

STREET

66'

LEGEND:

Surveyed line ————

Pipe and Plug ————°

C.C.B. Jr.

Survey No. 3540