

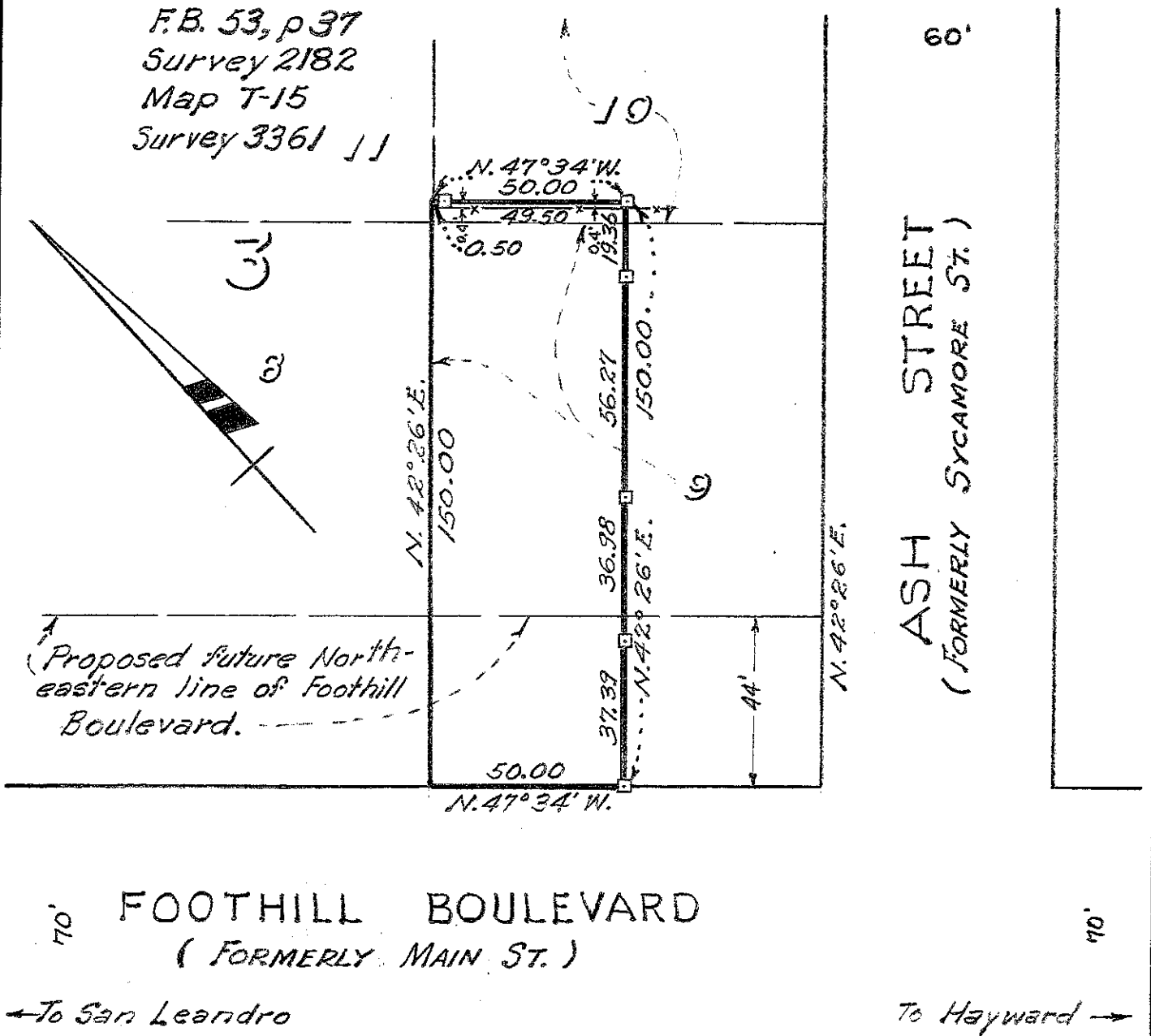
Survey for MR. GLEN V. COLBY
 in Eden Township, Alameda County, California.
 of a portion of Lots 9 and 10, Block 3, "MAP OF THE
 LAND OF HAYWARDS PARK HOMESTEAD UNION",
 etc., filed October 24, 1871 in Book 7 of Maps, at
 page 30, in the office of the County Recorder
 of Alameda County.

SCALE: 1 INCH = 40 FEET
 Surveyed, August 7, 1953


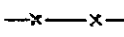
John A. Mancini, R.E. No. 1592
 1279 "A" St., Hayward, California.

REFER:

F.B. 53, p 37
 Survey 2182
 Map T-15
 Survey 3361 JJ



LEGEND:

Stakes 
 Fence 

60'

G.C.B. Jr.

Survey No. 3487