




SURVEY FOR MR. WALTER L. JANSSEN
 IN THE CITY OF HAYWARD, ALAMEDA COUNTY, CALIFORNIA
 OF A PORTION OF PLOTS 19-A AND 19-C AS SHOWN ON THE
 MAP OF "MEEK TOWN TRACT, EDEN TOWNSHIP, ALAMEDA
 CO., CAL.", FILED OCTOBER 18, 1905 IN BOOK 20 OF
 MAPS AT PAGE 85, OF OFFICIAL RECORDS OF ALAMEDA
 COUNTY.

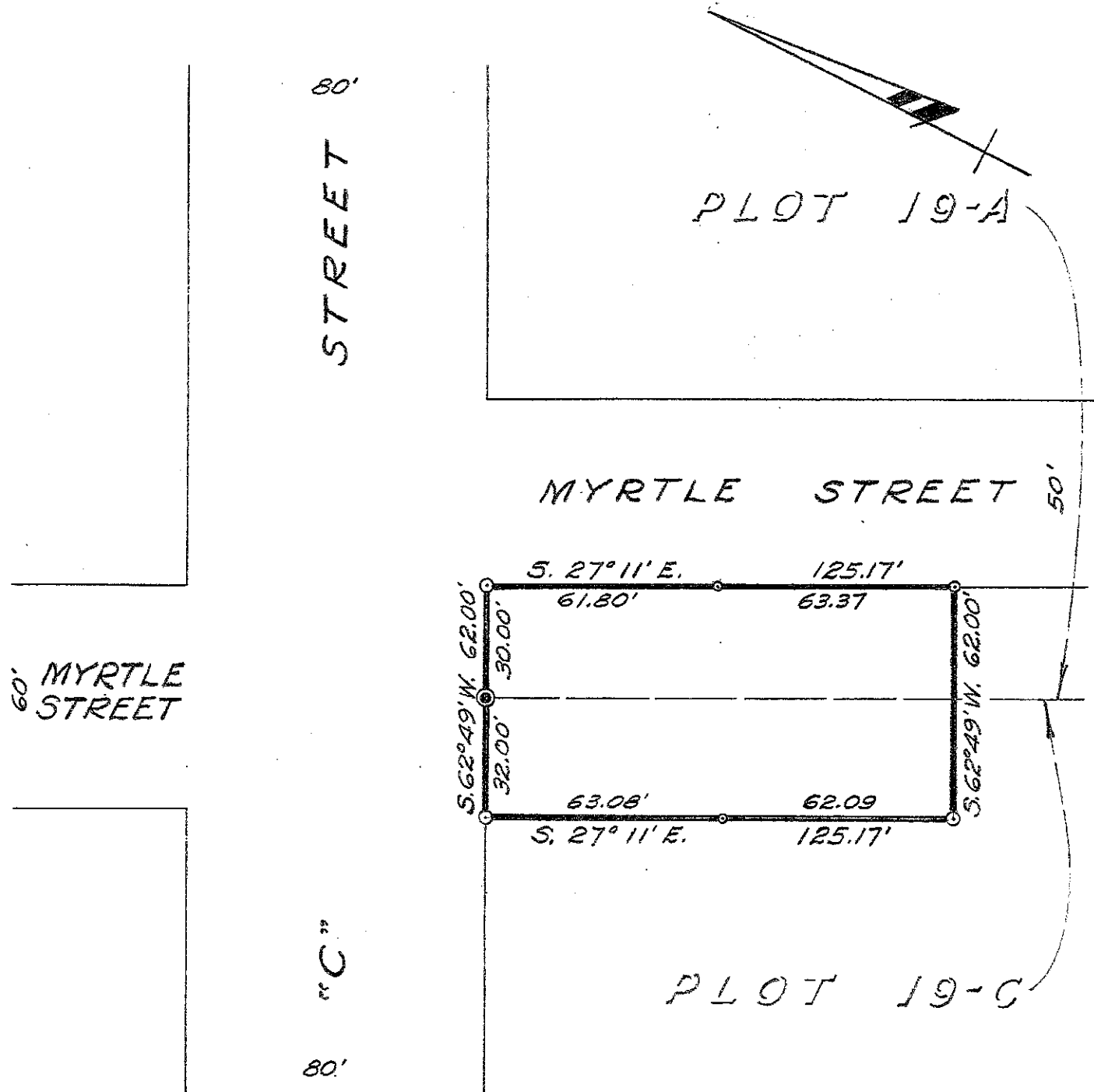
REFER:
 F.B. 51, p. 59
 F.B. 18, p. 76
 Map T-33
 Map 4-15

Scale: 1 Inch = 40 Feet
 Surveyed: May, 1953

JOHN A. MANCINI, R.E. No. 1592
 1279 "A" St., Hayward, California

LEGEND:

Surveyed Line 
 Concrete Monument 
 Iron Pipes 



SURVEY NO. 3434