

SURVEY FOR MRS. FLORA CORRIEA  
 IN THE CITY OF HAYWARD, ALAMEDA COUNTY, CALIFORNIA

Scale: 1 Inch = 20 Feet

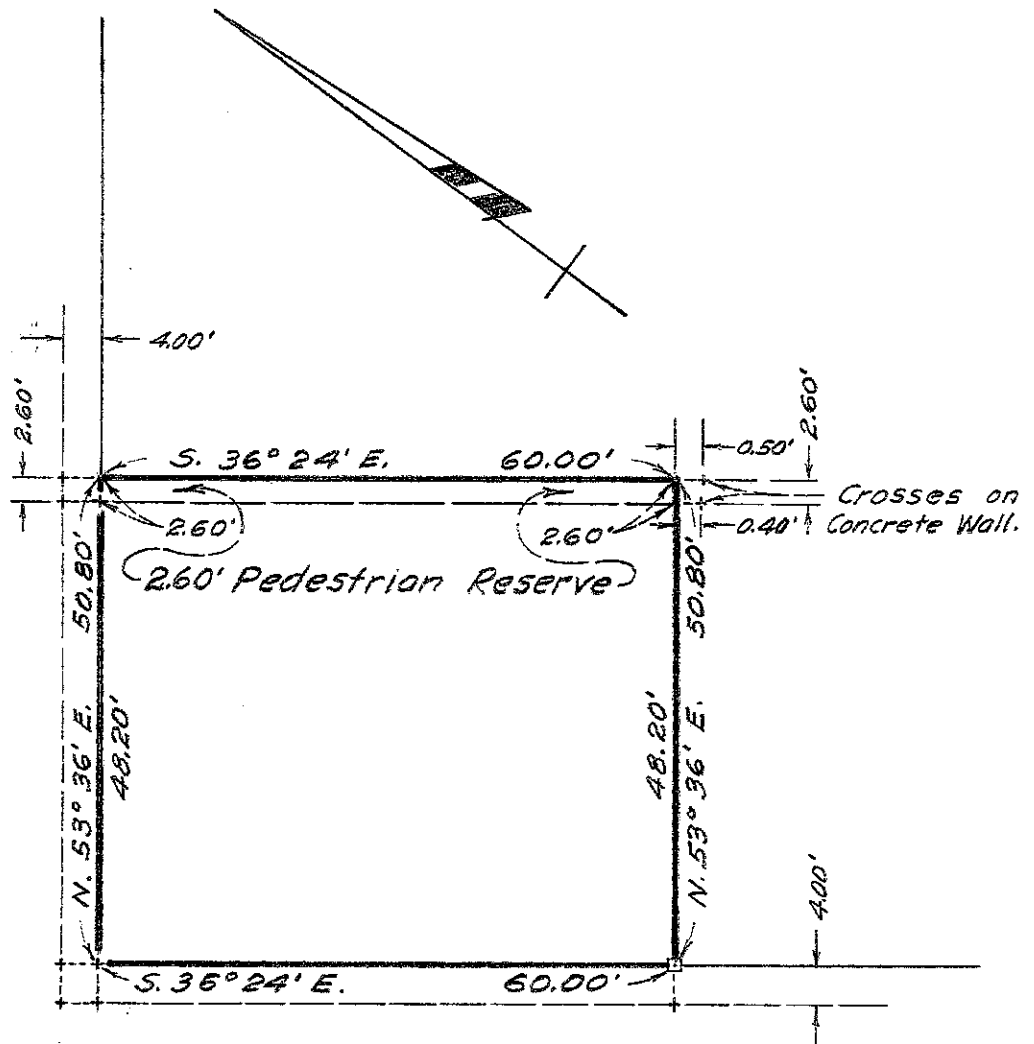
Surveyed: May, 1953

JOHN A. MANCINI, R. E. No. 1592  
 1279 "A" St., Hayward, California

REFER:

- F.B. 50, p. 56
- F.B. 50, p. 55
- F.B. 10, p. 5

"C" (70' WIDE) STREET  
 (FORMERLY WEBSTER STREET)



LEGEND:

- Surveyed Line
- Stake
- Cross in concrete sidewalk

CASTRO STREET

(80' WIDE)